



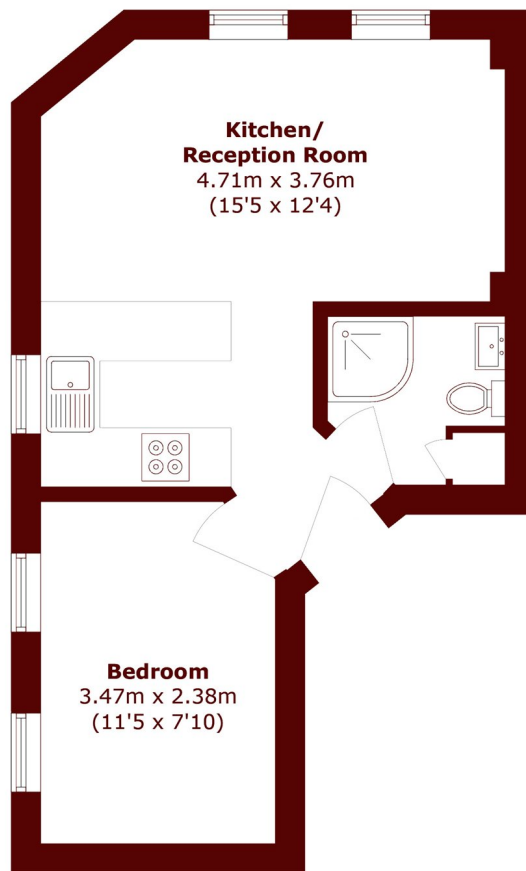
CHEPSTOW ROAD, W2

£2,752 per week (per month)

A bright and spacious one bedroom flat moments from Westbourne Grove

- | | |
|--------------------------------|----------------|
| One bedroom | Great location |
| Large living room | Wooden floors |
| Well-presented period building | EPC - C |

STEP INSIDE CHEPSTOW ROAD



Second Floor

Total area (approx.): 30.2 sq. m (325.1 sq. ft)

Notting Hill
020 7313 6910

Energy Rating: C We aim to make our particulars both accurate and reliable. However, they are not guaranteed; nor do they form part of an offer or contract. If you require clarification on any points then please contact us, especially if you're traveling some distance to view. Please note that appliances and heating systems have not been tested and therefore no warranties can be given as to their good working order

MARSH &
PARSONS