

65 Heath Road

Middlesex • London • UB10 0SN

PCM: £1,400 PCM



coopers
est 1986

Presented to the market, this fantastic LUXURY ONE BEDROOM apartment to the market situated in a prime location just off of the Uxbridge road. Local amenities and transport links are just within walking distance. Finished to a high specification throughout this spacious one double bedroom consists of a good size lounge/diner, separate fully fitted kitchen with integrated appliances and a luxurious modern bathroom. Benefits include; Gas central heating, double Glazing, One allocated parking bay along with street parking. Available part furnished.

Luxury Apartment

Large Lounge

Spacious Kitchen with Integrated Appliances

Family Bathroom

Big Double Bedroom

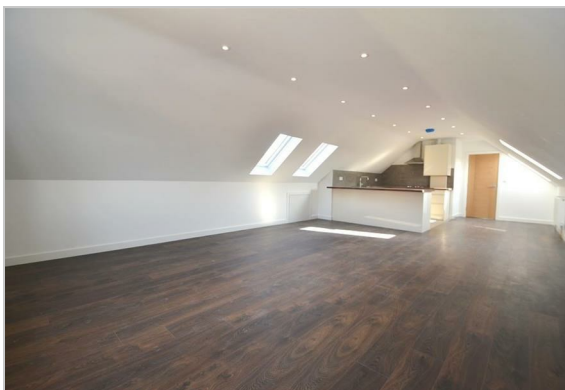
Gas Central Heating

Allocated Parking

EPC Rating C

Great Transport Links

Nearby to Local Amenities



TOTAL APPROX. FLOOR AREA 760 SQ.FT. (70.6 SQ.M.)

Whilst every attempt has been made to ensure the accuracy of the floor plan contained here, measurements of doors, windows, rooms and any other items are approximate and no responsibility is taken for any error, omission, or mis-statement. This plan is for illustrative purposes only and should be used as such by any prospective purchaser. The services, systems and appliances shown have not been tested and no guarantee as to their operability or efficiency can be given.
Made with Metropix ©2021



Available Date

14th February 2026

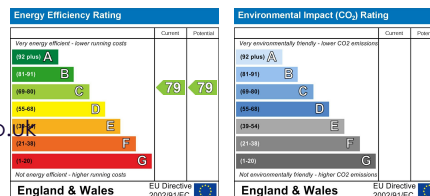
coopers
est 1986

01895 257 566

1 Vine Street, Uxbridge,
Middlesex, UB8 1QE

propertymanagement@coopersresidential.co.uk

CoopersResidential.co.uk



Important Notice: These particulars, whilst believed to be accurate are set out as a general outline only for guidance and do not constitute any part of an offer or contract. Intending purchasers should not rely on them as statements or representation of fact, but must satisfy themselves by inspection or otherwise has the authority to make or give any representation or warranty in respect of the property.