

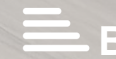


RESIDE
MANCHESTER



Railings 5 Shale Lane
Middlewood Locks, Salford, M5 4BU

£1,550 PCM



Railings 5 Shale Lane

Middlewood Locks, Salford, M5 4BU

Middlewood Locks is an award-winning canalside neighbourhood, and we are excited to introduce the new phase, now available to rent with immediate move-ins.

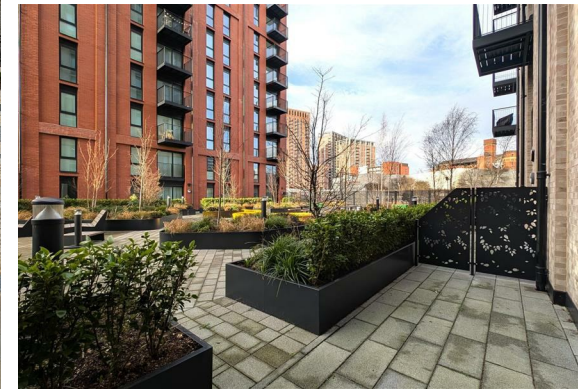
This furnished two-bedroom, one-bathroom apartment has been thoughtfully designed and offers a high specification throughout, including a fully fitted kitchen with integrated appliances, contemporary bathrooms, double-glazed windows, and access to a secure parcel system.

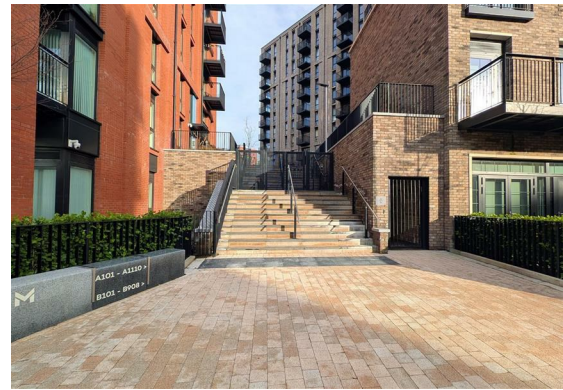
The property also benefits from a small private garden, perfect for enjoying the outdoors or relaxing waterside.

Set within a vibrant canalside community with green public spaces, this apartment offers a stylish and convenient lifestyle in a sought-after location.

Call our rental team on 0161 837 2840 today to register your interest and be among the first to secure a home in this fantastic new development.

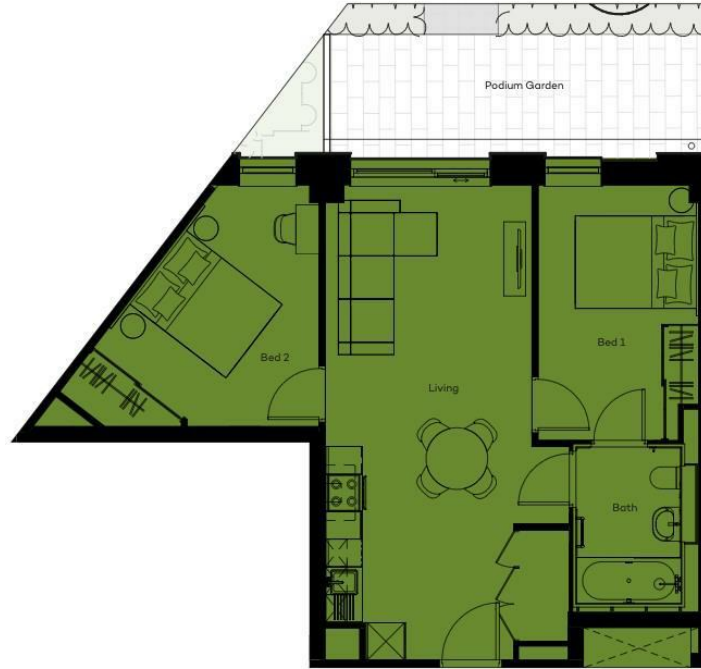
- Two Double Bedrooms
- One Bathroom
- Private Podium Garden
- Fully Furnished With Brand New Furniture
- Available Immediately
- EPC Rating B
- Secure Parcel System
- 10 Minute Walk Into Manchester City Centre
- Brand New Development
- Canalside Neighbourhood





Floor Plan

2 BED PODIUM GARDEN



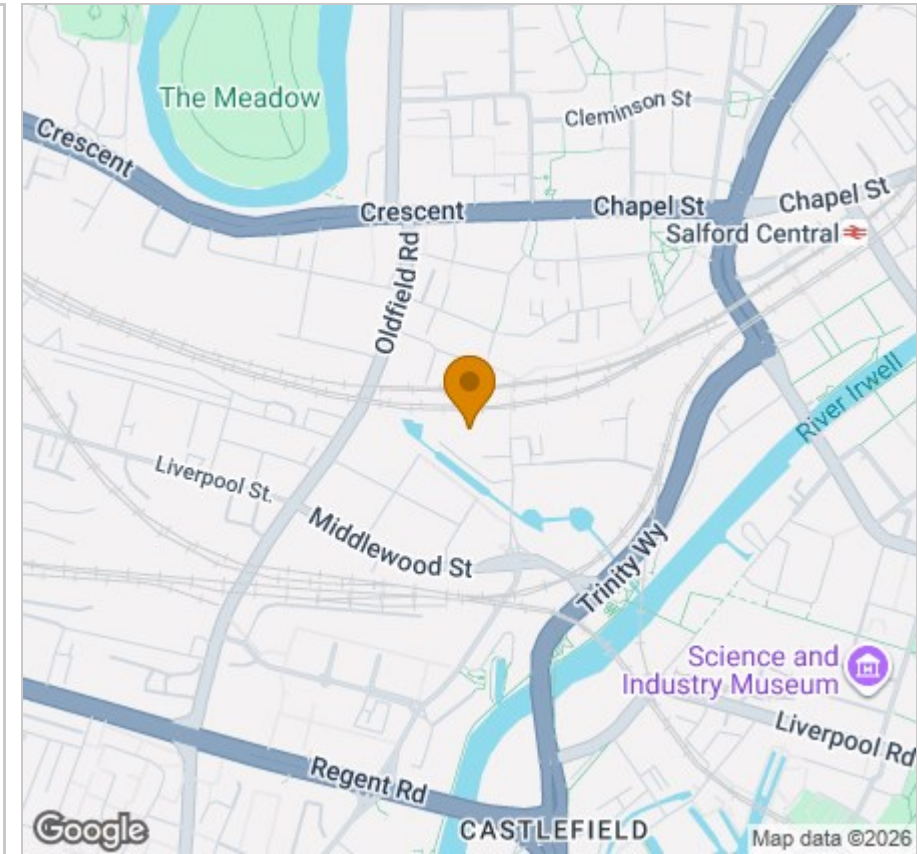
APARTMENT A101 - BLOCK A

Viewing

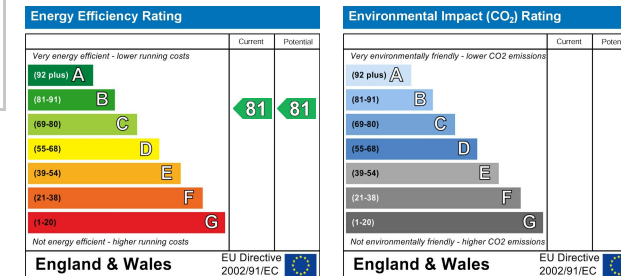
Please contact our Reside Manchester Office on 0161 837 2840 if you wish to arrange a viewing appointment for this property or require further information.

These particulars, whilst believed to be accurate are set out as a general outline only for guidance and do not constitute any part of an offer or contract. Intending purchasers should not rely on them as statements of representation of fact, but must satisfy themselves by inspection or otherwise as to their accuracy. No person in this firm's employment has the authority to make or give any representation or warranty in respect of the property.

Area Map



Energy Efficiency Graph



Upper Ground, 4 Jordan Street, Manchester, Greater Manchester, M15 4PY

Tel: 0161 837 2840 Email: info@residemanchester.com www.reside-property.com