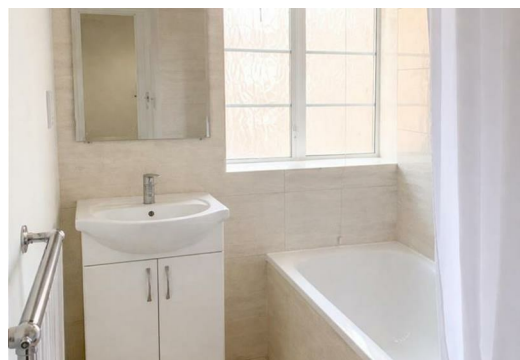


# TATES

020 7602 6020



**Edith Villas, London W14 9AA**

**£3,150 Per month**

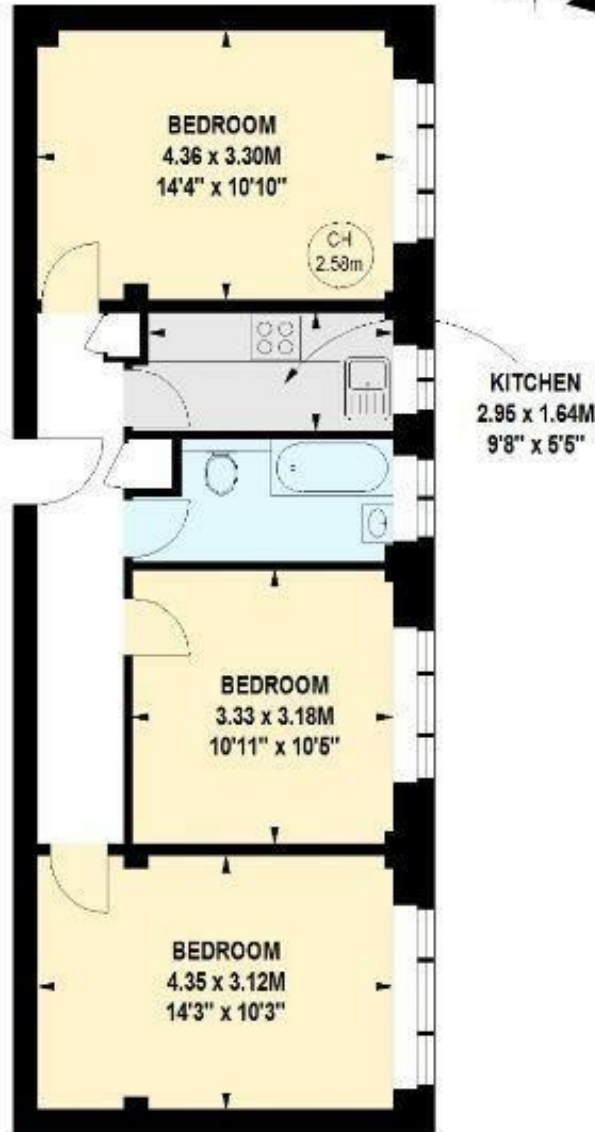
- Two/Three Bedroom Apartment
- 24 Hour Porter
- Furnished
- Wooden Floors
- Lift

# West Kensington Court, W14

Approximate gross internal area

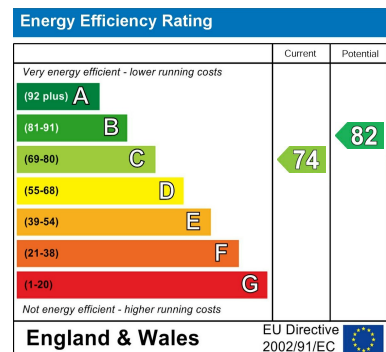
57.41 sq m / 618 sq ft

Key :  
CH - Ceiling Height



Second Floor

Whilst these particulars are produced in good faith and are believed to be correct, no guarantee is given, nor any responsibility accepted, by Tates nor by any of its representatives, for their accuracy. The particulars do not constitute part of any offer or contract, and it is recommended that such things as measurements, condition, structure, services, appliances, fixtures and fittings and facilities are all independently assessed by the prospective purchaser or renter of the subject property prior to committing to any contract.



135 Hammersmith Road, West Kensington, London W14 0QL

mail@tatesestates.co.uk

tatesestates.co.uk

Tates (Agents) Ltd. Registered in England and Wales No. 02356337  
Registered Office: Imperial House, 8 Keane Street, London WC2B 4AS

