



Windmill Road, W5

£450,000

****Offers In Excess Of**** A smartly presented two bedroom first floor flat in this well located building.

Also comprises entrance hall, reception room and well fitted kitchen and bathroom. Outside are well tended communal gardens and storage.

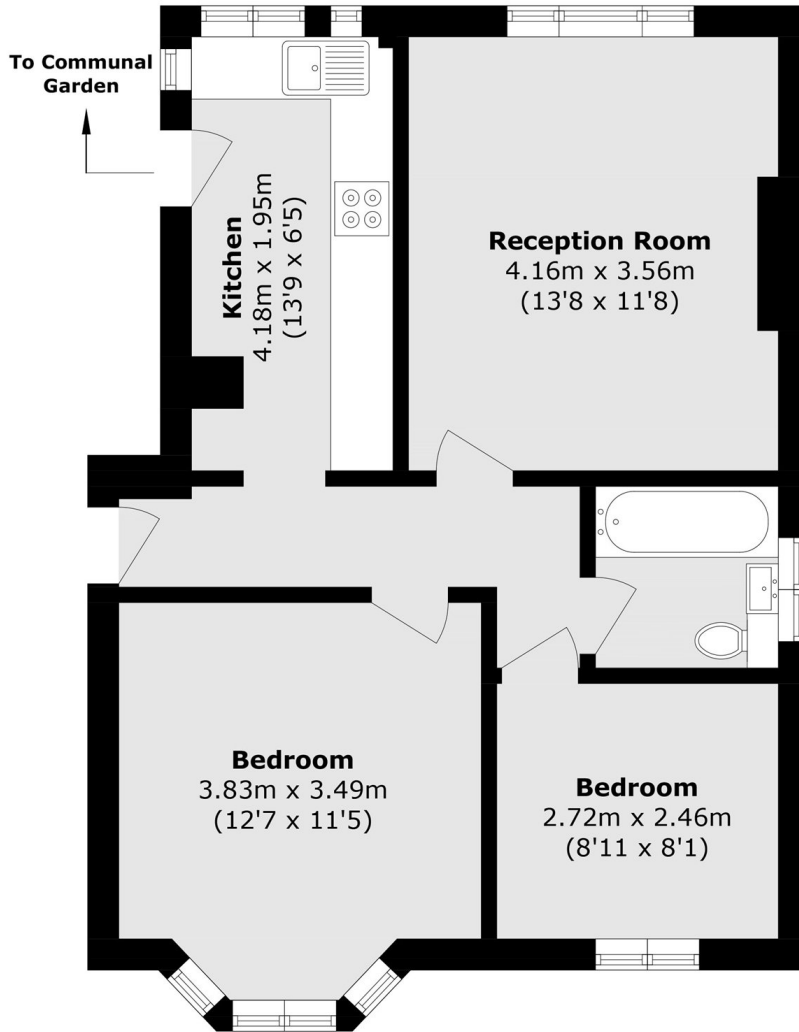
Situated directly opposite Blondin Park and just a short stroll from Northfields station.

Offered with Share of Freehold and no onward chain.

Features

Two Bedroom Flat
Share of Freehold
Excellent Condition
Residents Parking
No Onward Chain
Close to Tube

Windmill Road,
London, W5



Total area (approx.): 53.1 sq. m (571.5 sq. ft)