



Lion Gate Gardens, TW9

£3,200 Per calendar month

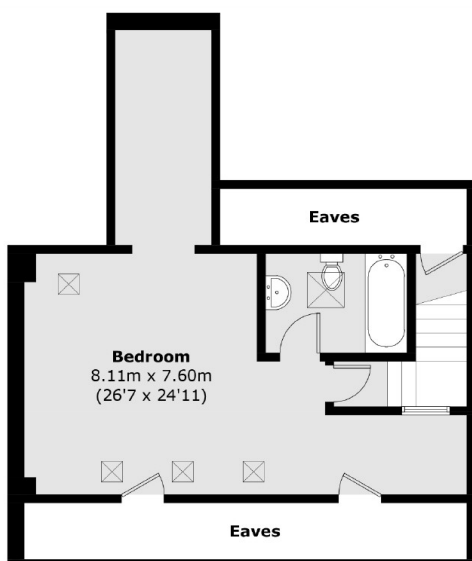
A truly stunning three double bedroom split level apartment that is as pretty inside as the building is outside. A beautiful mix of character and modern living close to The Royal Botanic Kew Gardens.

Lion Gate Gardens is a continuation of Ennerdale Road which leads directly to Kew Village with its array of local shops and is home to Kew Gardens Station, yet equally accessible to Richmond, Sheen and Kew Gardens.

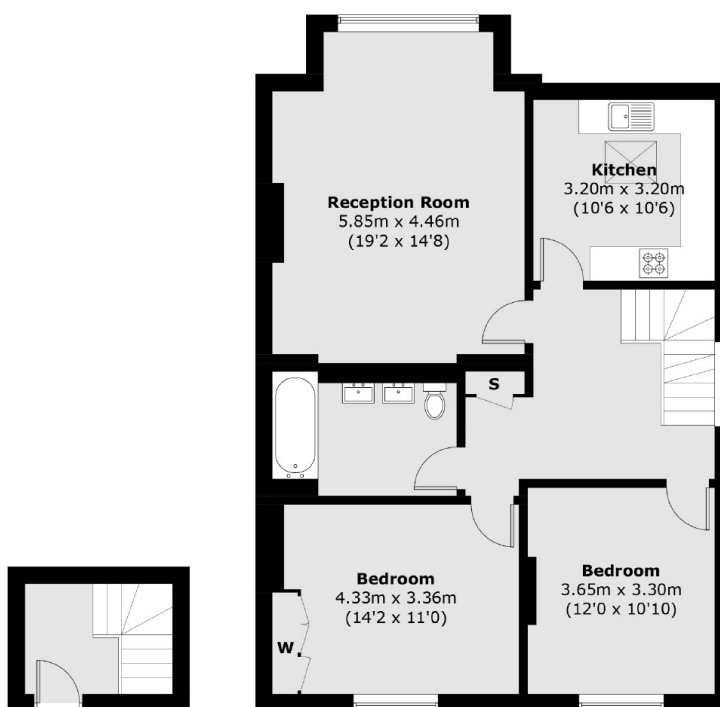
Features

- Three Double Bedrooms
- Private Parking
- Stunning Interior
- Large Kitchen
- Two Bathrooms
- Modern Living

Lion Gate Gardens, Kew, TW9



Third Floor



First Floor

Second Floor

Total area (approx.): 130.8 sq. m (1,407.9 sq. ft)
(Excluding Eaves)

Dexters

Kew
2 Mortlake Terrace
London
TW9 3DT
Lettings
020 8939 6071

Energy Rating: D. We aim to make our particulars both accurate and reliable. However they are not guaranteed; nor do they form part of an offer or contract. If you require clarification on any points then please contact us, especially if you're traveling some distance to view. Please note that appliances and heating systems have not been tested and therefore no warranties can be given as to their good working order.

 **RICS** | Regulated
Estate Agent
and Letting Agent

[dexters.co.uk](https://www.dexters.co.uk)