



**Moloney**  
COUNTRY PROPERTY



ROWAN NORTHAM

## ROWAN, DIXTER LANE, NORTHIAM, EAST SUSSEX. TN31 6PP

---

A SPACIOUS, DETACHED, 3 BED BUNGALOW, CONVENIENTLY LOCATED IN A SOUGHT AFTER LANE LOCATION ON THE OUTSKIRTS OF THE VILLAGE, SITTING IN LEVEL GARDENS AND GROUNDS OF 0.6 ACRES (TBV). ACCOMMODATION INCLUDES SITTING/DINING ROOM WITH WOOD-BURNING STOVE, GARDEN ROOM, KITCHEN WITH SEPARATE UTILITY/BOOT ROOM, MAIN BEDROOM WITH EN-SUITE SHOWER ROOM, 2 FURTHER DOUBLE BEDS & FAMILY BATHROOM. EXCELLENT PARKING, GARAGE/WORKSHOP & GARAGE. VIEWING HIGHLY RECOMMENDED.



ACCOMMODATION LIST: ENTRANCE PORCH, ENTRANCE HALL, CLOAKROOM, SITTING/DINING ROOM, KITCHEN, GARDEN ROOM. REAR LOBBY, BOILER ROOM. BEDROOM ONE WITH EN-SUITE SHOWER ROOM, TWO FURTHER DOUBLE BEDROOMS, BATH/SHOWER ROOM, UTILITY/BOOT ROOM. LARGE FRONT GARDEN WITH EXCELLENT OFF ROAD PARKING, TWO SINGLE GARAGES, LARGE LEVEL REAR GARDEN, 2 TIMBER GARDEN SHEDS, GREENHOUSE. 0.6 ACRES (TBV) OIL FIRED CENTRAL HEATING.

Covered entrance with steps up to:

**ENTRANCE PORCH:** Obscure glazed UPVC door with matching panel to side. Quarry tiled floor. Wooden glazed door with matching panel to side to:

**ENTRANCE HALL:** L-shaped. Double doored cloaks/storage cupboard. BT point. Linen cupboard. Loft hatch with ladder and light, partially boarded for storage.

**CLOAKROOM:** Obscure glazed UPVC window to rear. White suite comprising back to wall WC & hand basin set onto storage unit with tiled splash back. Karndean flooring Mirror over.

**SITTING/DINING ROOM:** UPVC double glazed window enjoying views over the front garden. Exposed brick chimney breast with Yeoman multi fuel stove. BT point. TV point. Central light/fan.

**DINING AREA:** Large UPVC double glazed window enjoying views over the rear garden. Door to kitchen, doors to:

---

**GUIDE PRICE £750,000**



**GARDEN ROOM:** Triple aspect room with UPVC floor to ceiling double glazed window to front. Sliding door leading out to the side garden, UPVC double glazed doors to the rear covered decked terrace. Quarry tiled floor.

**KITCHEN:** UPVC double glazed window enjoying views over the rear garden. Fitted with range of white base and wall units with laminate worktop over inset with ceramic sink unit. Electric hob with extractor over. Plumbing for dishwasher. Zanussi Oven with cupboards above and below. Space for  $\frac{3}{4}$  height fridge/freezer. Metro tiled splash-backs. Karndean flooring. Door back to the entrance hall, door to:

**REAR LOBBY:** UPVC double glazed door leading out to the rear garden. Door to boiler room housing Grant oil fired boiler.

**BEDROOM ONE:** UPVC double glazed window to side. Coved ceiling. Door to:

**EN-SUITE SHOWER ROOM:** Fitted with white suite comprising back to wall WC, wall mounted wash hand basin set on storage unit with mirror, light/shaver point over & shower cubicle. Ladder style heated towel rail. Tiled walls & floor. Extractor.

**BEDROOM TWO:** UPVC double glazed window to the front. Coved ceiling. Fitted wardrobe cupboards with hanging rail and shelves, cupboards above. TV point.

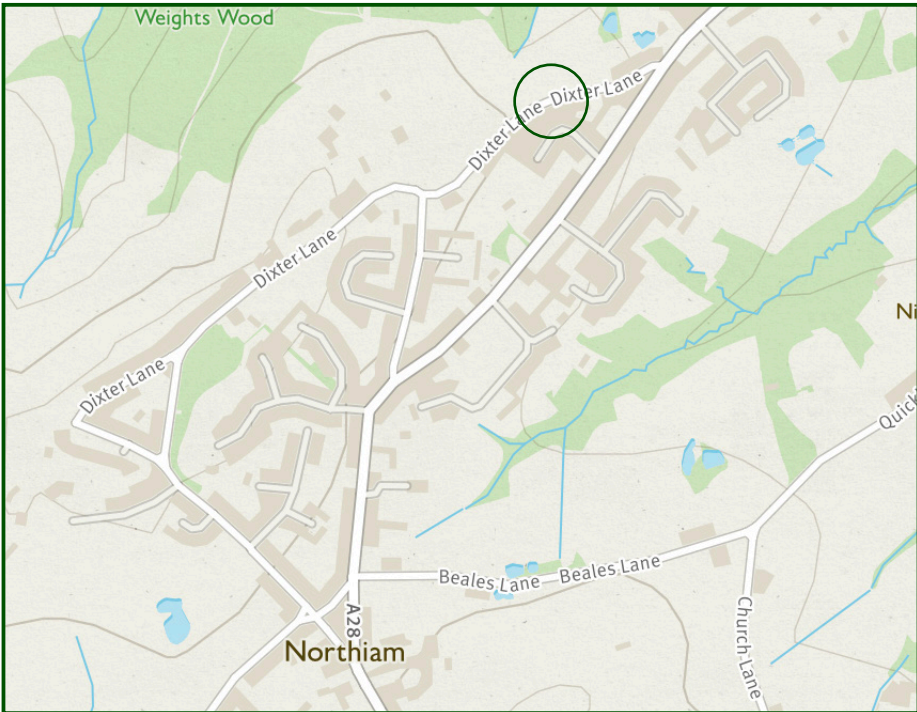
**BATH AND SHOWER ROOM:** UPVC double glazed window to side. Fitted with white suite comprising WC, pedestal mounted hand basin with mirror and shaver point over & bath with power shower over. Part tiled walls, Karndean flooring.

**BEDROOM THREE:** UPVC double glazed window to the front. Fitted wardrobe cupboard with hanging rail. Coved ceiling. Wall mounted hand basin with tiled splash back and mirror over.

**UTILITY/BOOT ROOM:** UPVC double glazed door leading out to the rear garden, window enjoying views over the rear garden. Plumbing for washing machine. Venting for tumble dryer. Double doored base unit with stainless steel sink unit. Storage shelves. Vinyl floor. Door to: Garage/Workshop: Up and over door to the front. Light and power connected. Door to: Garage 2: Matching metal up and over door to the front. Light and power connected. Window and door leading out to the rear garden.

**OUTSIDE:** The property is approached from the lane via a block paved driveway. The driveway passes through double opening metal gates which are set into brick piers which form part of the walls either side of the entrance. The area inside the gates provides excellent parking and turning and leads to the two single Garages. **Cont.**





IMPORTANT NOTICE: Moloney Country Property provides these particulars in good faith for guidance purposes only. The vendors of the property have supplied to us the aforementioned measurements of garden, and/or land sizes. We wish to stress that Moloney Country Property whilst able to digitally measure land sizes, takes no responsibility for any errors or omissions incurred as a result of this process. We strongly encourage purchasers to satisfy themselves that the particulars contained herein are accurate prior to entering into negotiations and/or incurring any professional costs. Please note that we have not conducted a structural survey of the property nor have we tested any of the heating, drainage, services, fittings or sanitary items in this property.

The front garden is of excellent proportions, mainly laid to level lawn with well planted borders, beds and individual specimen fruit trees. Gates to both sides give access to the rear. The rear garden is a particular feature of the property, being of excellent size and mainly laid to level lawn with mature planted beds. To the rear of the property is an area of covered, decked terrace for al-fresco dining. Timber garden shed to the side. Screened bonfire and composting area with shed and greenhouse. Oil tank. Believed to measure 0.6 acres in total (tbv).

**SERVICES:** Mains water, electricity and drainage are connected. Oil fired central heating.

**FLOOR AREA:** 172m<sup>2</sup> (1,851 ft<sup>2</sup>) approx. including garage.

**EPC RATING:** 'D'

**LOCAL AUTHORITY:** Rother District Council

**COUNCIL TAX BAND:** 'F'

**TENURE:** Freehold

**TRANSPORT LINKS:** For the commuter, Battle and Robertsbridge stations provide services via Tonbridge to London Charing Cross, whilst Ashford International provides a fast service to St. Pancras and Europe.

The Motorway network (M25) can be easily accessed at Junction 5 via the A21 (at Sevenoaks).

**DIRECTIONS:** : Travelling in a northerly direction on the A28, take the left hand turning signposted Dixter Road. Take the third right turn, at the grass triangle into Beacon Lane and continue into Dixter Lane at the junction. Rowan will be found on the left hand side of the road.

**What3Words (Location):** [///songbook.physics.undertook](https://www.what3words.com/#!/songbook.physics.undertook)

**VIEWINGS:** All viewings by appointment. A member of the team will conduct all viewings, whether or not the vendors are in residence.

---

**MOLONEYCOUNTRYPROPERTY.COM**

---

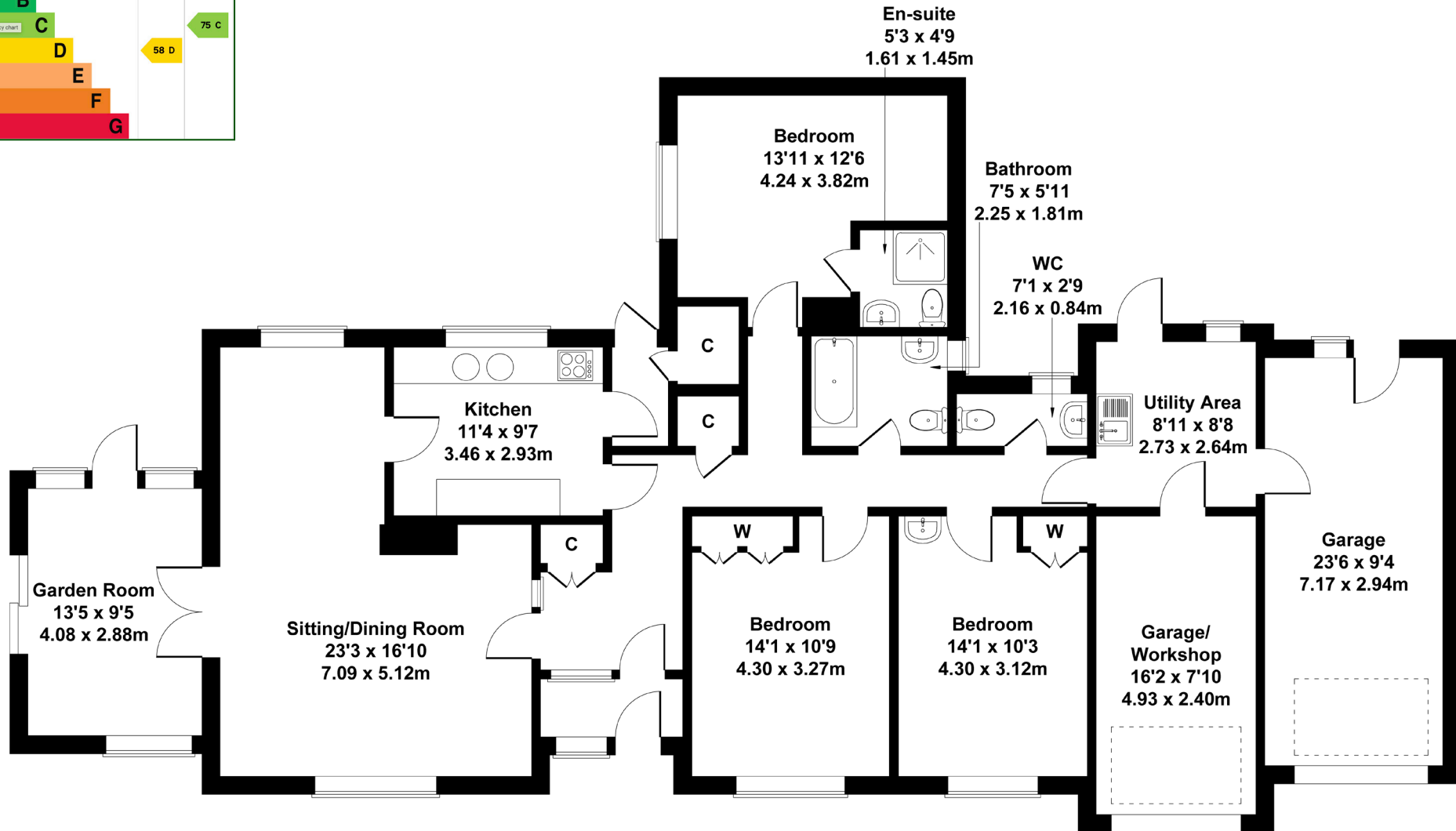
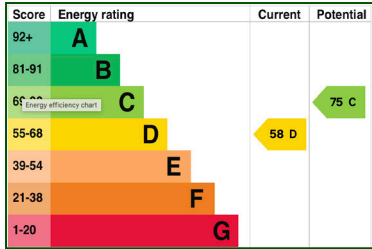
**EMAIL: SALES@MOLONEYCOUNTRYPROPERTY.COM**

---

**TELEPHONE: 01797 253000 or 01580 212828**

# Rowan

Approximate Gross Internal Area  
1851 sq ft - 172 sq m



Not to Scale.  
For Illustrative Purposes Only.

TELEPHONE: 01580 212828 & 01797 253000

ROWAN, DIXTER LANE, NORTHAM, EAST SUSSEX. TN31 6PP

