



Macpherson Robertson Way, Mildenhall, Suffolk, IP28 7RS

Rent - £1,215 PCM Deposit - £1,401

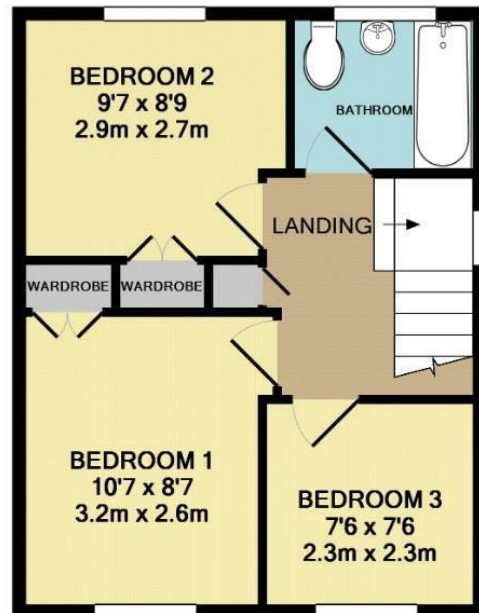
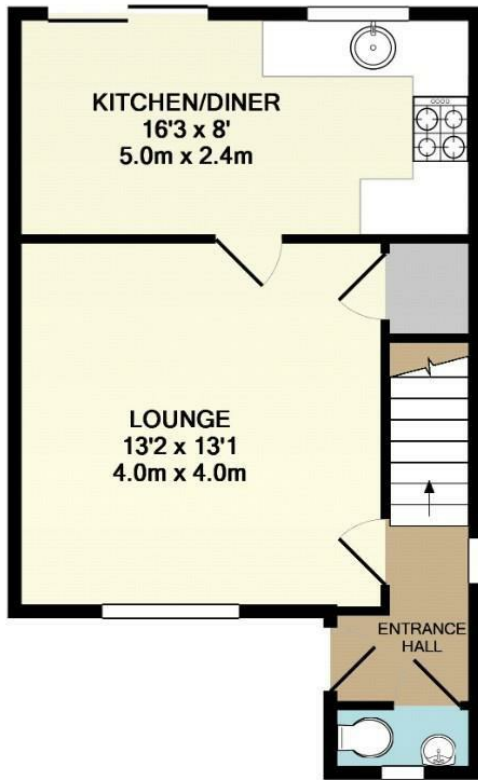
This 3 bedroom property is located close to RAF bases and close to the town centre. The property has been recently decorated and has had new flooring laid throughout. The accommodation includes 3 bedrooms, a spacious lounge, kitchen with a dining area, family bathroom & cloakroom. There is an enclosed rear garden, garage & off road parking for multiple vehicles.

AGENTS NOTE: Property images may have been digitally enhanced, edited, or virtually staged using artificial intelligence and may not accurately reflect the property's current presentation, condition, furnishings, or contents. Floorplans and measurements are provided for guidance only and should not be relied upon.

- SEMI DETACHED HOUSE
- 3 BEDROOMS, 2 WITH BUILT IN CLOSETS
- NEW FLOORING THROUGHOUT
- FAMILY BATHROOM & CLOAKROOM
- ENCLOSED REAR GARDEN, GARAGE & OFF ROAD PARKING
- CLOSE TO RAF BASES
- GAS HEATING & ENERGY RATING - C
- APPROXIMATE SIZE - 717 SQ FT
- PETS CONSIDERED / COUNCIL TAX BAND - C
- AVAILABLE NOW



Council Tax Band: C - EPC Rating: C 69



1ST FLOOR
APPROX. FLOOR
AREA 344 SQ.FT.
(31.9 SQ.M.)

GROUND FLOOR
APPROX. FLOOR
AREA 373 SQ.FT.
(34.7 SQ.M.)

TOTAL APPROX. FLOOR AREA 717 SQ.FT. (66.6 SQ.M.)

Whilst every attempt has been made to ensure the accuracy of the floor plan contained here, measurements of doors, windows, rooms and any other items are approximate and no responsibility is taken for any error, omission, or mis-statement. This plan is for illustrative purposes only and should be used as such by any prospective purchaser. The services, systems and appliances shown have not been tested and no guarantee as to their operability or efficiency can be given
Made with Metropix ©2012

