





Springfield Stocks Lane

Over Peover, Knutsford

Spacious 4-bed detached home in village centre. Modernised, versatile layout, garden room, good size south-west facing rear garden, in-out drive, 2 garages. Option for 5th bedroom. 2,200 sq ft. Council Tax band: G

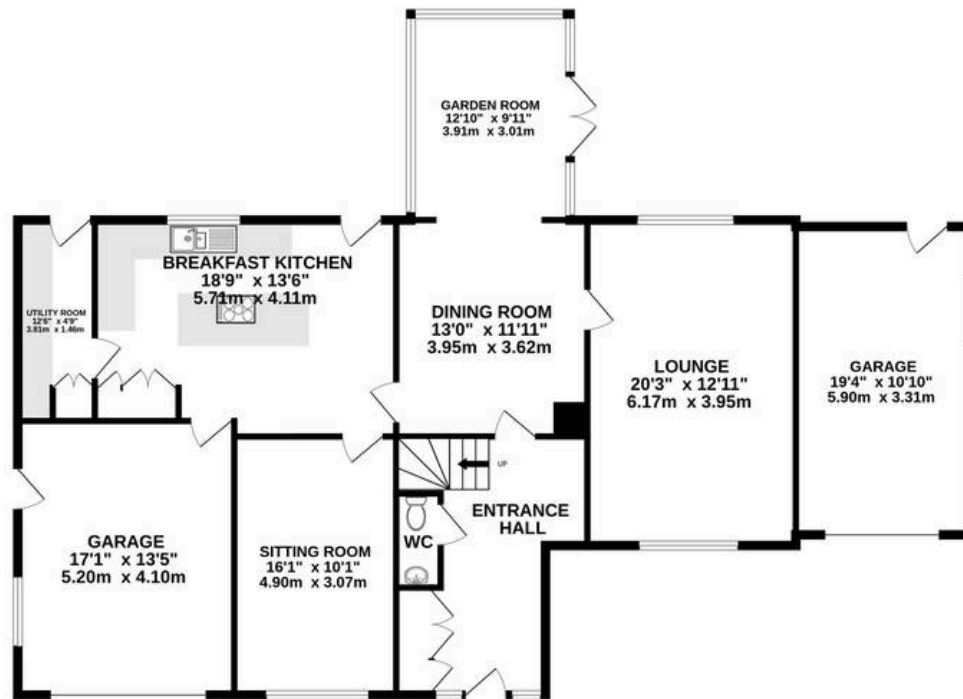
Tenure: Freehold

EPC Energy Efficiency Rating: D

- Extended and immaculately presented detached family house
- Modern breakfast kitchen and 4 reception rooms
- Impressive oak framed garden room
- 20' dual aspect lounge with feature fireplace
- Excellent principle bedroom suite including dressing room/bedroom and bathroom
- Guest bedroom with en-suite and two further bedrooms
- Wonderful central Over Peover Village location with open views to the front
- In - out driveway
- Established and very pretty rear garden



GROUND FLOOR
1616 sq.ft. (150.1 sq.m.) approx.



1ST FLOOR
1150 sq.ft. (106.9 sq.m.) approx.



TOTAL FLOOR AREA : 2766 sq.ft. (257.0 sq.m.) approx.

Whilst every attempt has been made to ensure the accuracy of the floorplan contained here, measurements of doors, windows, rooms and any other items are approximate and no responsibility is taken for any error, omission or mis-statement. This plan is for illustrative purposes only and should be used as such by any prospective purchaser. The services, systems and appliances shown have not been tested and no guarantee as to their operability or efficiency can be given.

Made with Metropix ©2026



Stuart Rushton & Company

Stuart Rushton & Co, 35 King Street – WA16 6DW

01565 757000

enquiries@srushton.co.uk

www.srushton.co.uk



We are not authorised to make or give any representations or warranties in relation to the property either here or elsewhere. We assume no responsibility for any statement that may be made in these particulars, and they do not form part of any offer or contract and must not be relied upon as statements or representation of fact. Any areas, measurements or distances are approximate. The text, photographs and plans are for guidance only. Importantly, it should not be assumed that the property has all necessary planning, building regulations or other consents and we have not tested any services, equipment or facilities. Purchasers must satisfy themselves by inspection or otherwise.