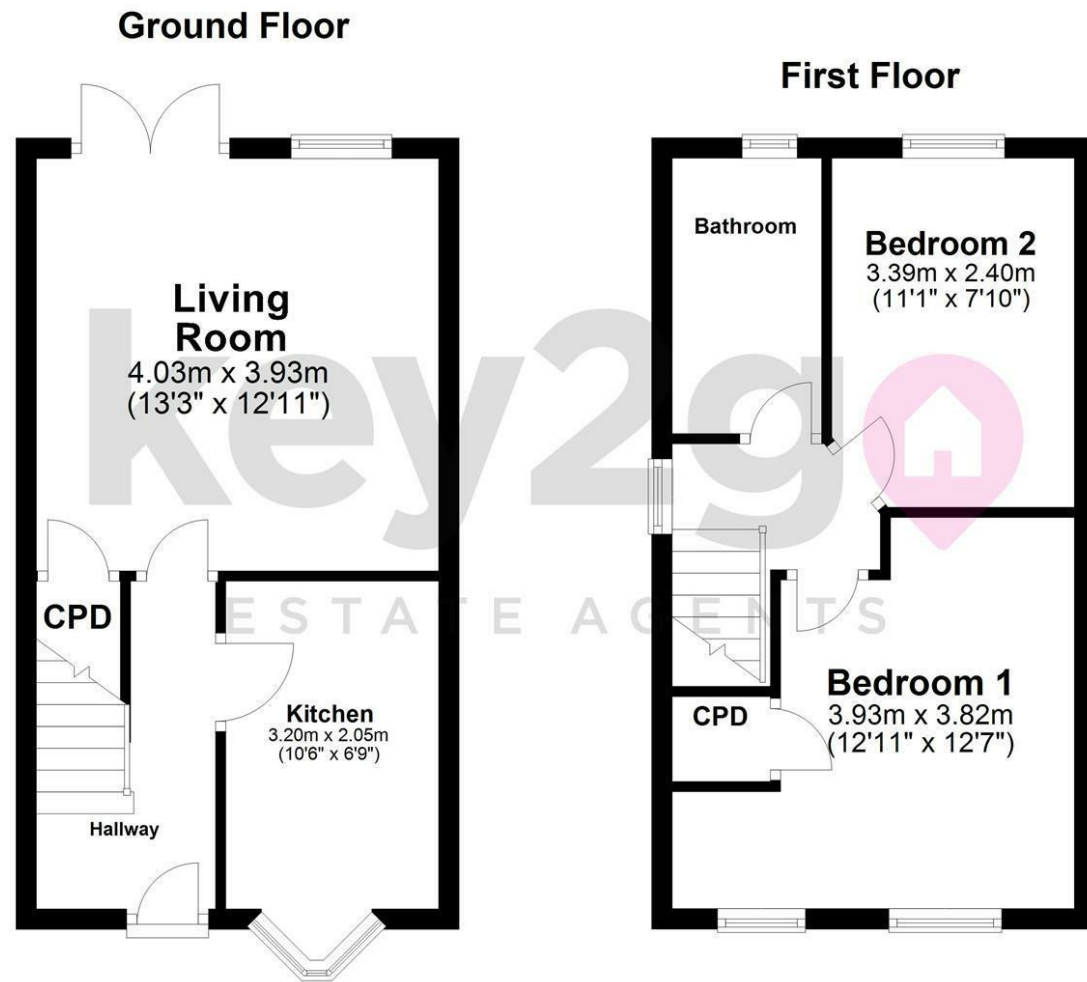


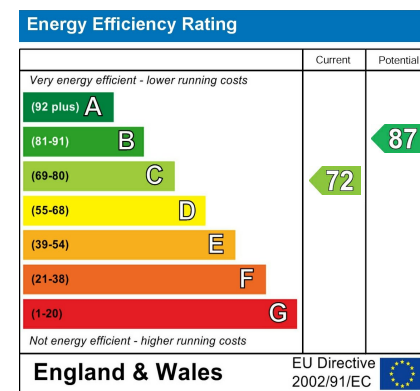
Floorplan



Area Map



Energy Efficiency Graph



**11 Rose Hill Close**  
Mosborough, Sheffield, S20 5PL

£950 Per Month



Viewing

Please contact our Lettings Team Office on 0114 2478819 if you wish to arrange a viewing appointment for this property or require further information.

These particulars, whilst believed to be accurate are set out as a general outline only for guidance and do not constitute any part of an offer or contract. Intending purchasers should not rely on them as statements of representation of fact, but must satisfy themselves by inspection or otherwise as to their accuracy. No person in this firm's employment has the authority to make or give any representation or warranty in respect of the property.



# 11 Rose Hill Close

Mosborough, Sheffield, S20 5PL

£950 Per Month



Offered to let, this attractive two-bedroom home is perfect for those seeking a property that is ready to move straight into. Beautifully presented throughout, the property features a stylish fitted kitchen and a contemporary modern bathroom, making it ideal for a couple or small family. Externally, the home benefits from a driveway providing convenient off-road parking, along with an enclosed rear garden offering a private and low-maintenance outdoor space. Situated within a highly sought-after village location, the property enjoys easy access to picturesque countryside walks while also being within close proximity to well-regarded local schools.

## SUMMARY

Offered to let, this attractive two-bedroom home is perfect for those seeking a property that is ready to move straight into. Beautifully presented throughout, the property features a stylish fitted kitchen and a contemporary modern bathroom, making it ideal for a couple or small family. Externally, the home benefits from a driveway providing convenient off-road parking, along with an enclosed rear garden offering a private and low-maintenance outdoor space. Situated within a highly sought-after village location, the property enjoys easy access to picturesque countryside walks while also being within close proximity to well-regarded local schools.

