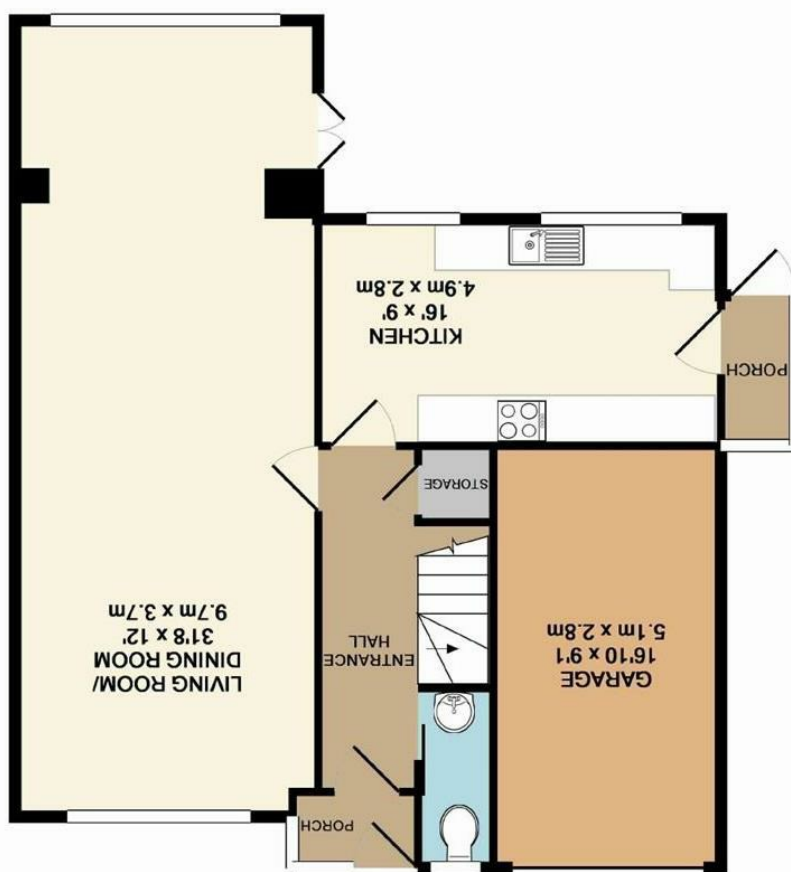


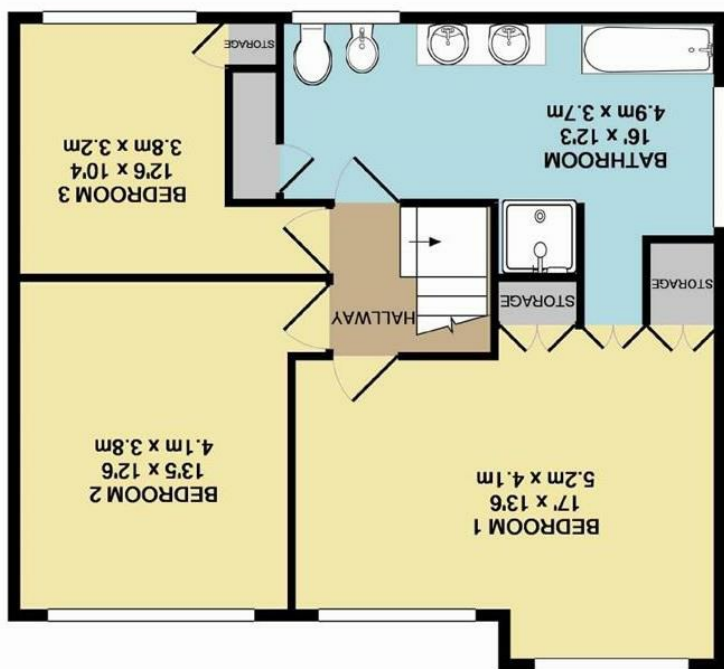
These particulars are believed to be accurate but they are not guaranteed and do not form a contract. Neither Jordan Fishwick nor the vendor or lessor accept any responsibility in respect of these particulars, which are not intended to be statements or representations of fact and any intending purchaser or lessee must satisfy himself by inspection or otherwise as to the correctness of each of the statements contained in these particulars. Any floorplans on this brochure are for illustrative purposes only and are not necessarily to scale.

Whilst every attempt has been made to ensure the accuracy of the floor plan contained here, measurements of doors, windows, rooms and any other items are approximate and no responsibility is taken for any error, omission, or mis-statement. This plan is for illustrative purposes only and should be used as such by any prospective purchaser. The services, systems and appliances shown have not been tested and no guarantee as to their operability or efficiency can be given.  
Made with Metropix ©2015

GROUND FLOOR  
APPROX. FLOOR  
AREA 815 SQ.FT.  
(75.7 SQ.M.)



1ST FLOOR  
APPROX. FLOOR  
AREA 684 SQ.FT.  
(63.6 SQ.M.)





Stelfox Avenue WA15 6UL

£580,000



### The Property

Located within easy walking distance of Timperley village, this generously proportioned and extended detached family home is ideally positioned for excellent transport links, convenient access to Wythenshawe Hospital, and falls within the catchment area of highly regarded local schools.

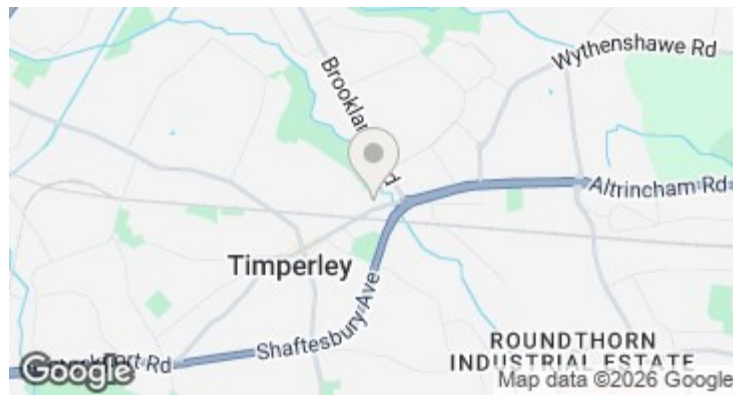
In brief, the accommodation comprises an inviting porch leading into a welcoming entrance hall with downstairs WC, a spacious open-plan lounge and dining area, and a well-appointed kitchen/breakfast room, all to the ground floor. To the first floor, a bright landing leads to three well-sized double bedrooms and a large four-piece family bathroom, which also benefits from Jack-and-Jill access to the principal bedroom.

Externally, the property boasts a private south-facing rear garden featuring a patio seating area and a lawn, bordered by mature hedges and established shrubbery. There is also access to the garage and a side pathway leading to the front, where off-road parking and a lawned garden can be found.

Early viewing is highly recommended to fully appreciate the space, location, and potential of this excellent family home.

### Directions

WA15 6UL



- No Onward Chain
- Three Double Bedrooms
- Lounge Diner
- Downstairs W.C
- Large Family Bathroom
- South Facing Rear Garden
- Walking Distance to Timperley Village
- Off Road Parking
- Garage
- Freehold

Postcode - WA15 6UL  
 EPC Rating - C  
 Floor Area - 1499.00 sq ft  
 Local Authority - TRAFFORD  
 Council Tax - E

