



Percy Mews, W1T

£950,000

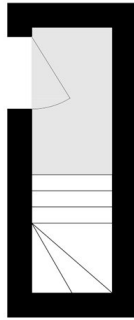
Rare to the market, this modern two bedroom home is set within the highly desirable cobbled Percy Mews. Beautifully presented throughout, the property features a bright, contemporary living space, a sleek kitchen with integrated appliances, two well proportioned bedrooms, and a stylish bathroom.

Quietly tucked away, yet within easy reach of local amenities and excellent transport links, this charming mews home combines peaceful living with central convenience.

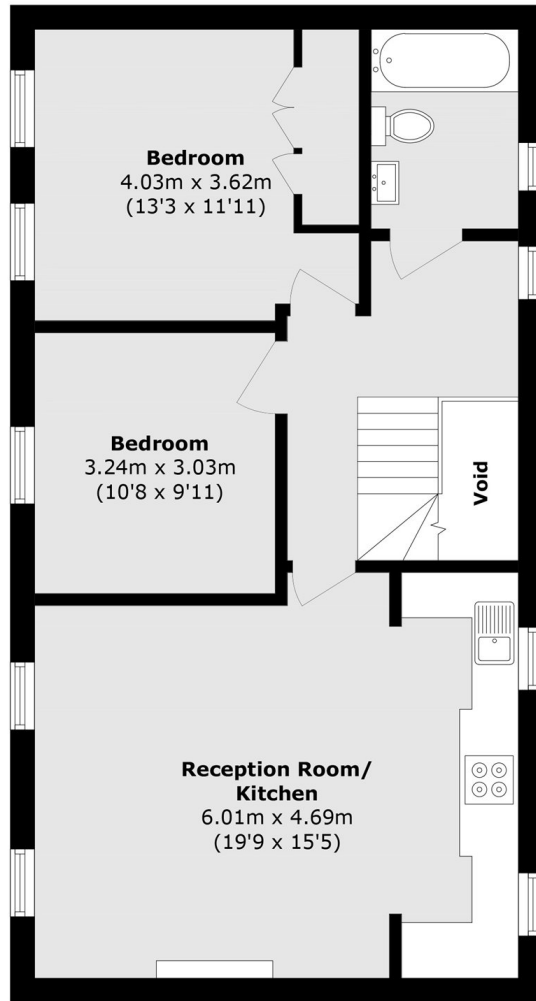
Features

- Two Double Bedrooms
- Mews Location
- Top Floor
- Modernly Refurbished
- Low Service Charge
- Fitzrovia

Percy Mews, London, W1T



Second Floor



Third Floor

Total area (approx.): 72.2 sq. m (777.1 sq. ft)
(Excluding Void)