



jordan fishwick

ALTRINCHAM
Park Road



**Park Road,
Altrincham, WA14 3JF**

£3,750 PCM



The Property

***** AVAILABLE JULY ***** Park Road, BOWDON - Luxury 2nd floor 3 bedroom apartment within a stunning block in a prime location. The interior and furnishings are of the highest quality and the apartment is ready to move into immediately! Fabulous open plan lounge kitchen and dining with balcony to the front aspect. The kitchen is fully fitted with state of the art appliances including wine fridge and coffee machine. The apartment has been fitted with an intelligent media system controlling both media and heating. Three large double bedrooms all with en suites and the master bedroom includes a walk in wardrobe. Lift access, under ground parking and security gates. Available July. Fully furnished £4,000pcm. Please contact the Hale office to arrange viewings 0161 929 9898 option 2.

Directions

WA14 3JF



- APARTMENT
- THREE DOUBLE BEDROOMS
- THREE BATHROOMS
- FURNISHED
- BALCONY
- OFF ROAD PARKING
- COUNCIL TAX BAND H
- EPC RATING B

Postcode - WA14 3JF

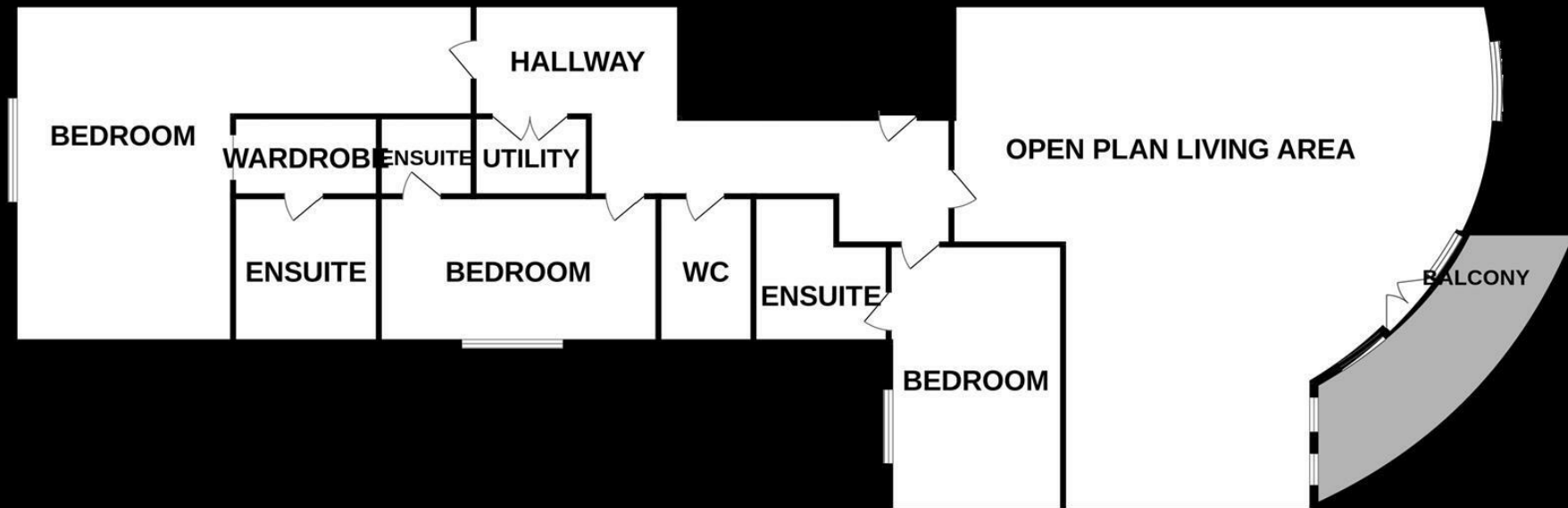
EPC Rating - B

Floor Area - sq ft

Local Authority - Trafford Borough Council -
House Moving

Council Tax - H





These particulars are believed to be accurate but they are not guaranteed and do not form a contract. Neither Jordan Fishwick nor the vendor or lessor accept any responsibility in respect of these particulars, which are not intended to be statements or representations of fact and any intending purchaser or lessee must satisfy himself by inspection or otherwise as to the correctness of each of the statements contained in these particulars. Any floorplans on this brochure are for illustrative purposes only and are not necessarily to scale.

Offices at: Chorlton, Didsbury, Disley, Hale, Glossop, Macclesfield, Manchester Deansgate, Manchester Whitworth Street, New Mills, Sale, Wilmslow and Withington

01619291994

halemanagement@jordanfishwick.co.uk

www.jordanfishwick.co.uk