



jordan fishwick

MANCHESTER
Malvern Grove



Malvern Grove, Manchester, M20 1HT

£1,050 Per Calendar Month



The Property

*** AVAILABLE MAY *** A lovely one-bedroom furnished apartment forming part of a purpose-built development on a popular road in West Didsbury. The property has been refurbished to a very good standard in recent years and offers generous living space. Perfectly suited to a professional individual or couple, the property is situated within walking distance into West Didsbury and all required amenities. The property briefly comprises; modern fully equipped kitchen, large double bedroom, spacious lounge and a three piece bathroom suite with shower, and separate utility cupboard with washer and dryer. Off street parking is also available. Furnished. To view this property please contact our Didsbury office.

View our Virtual Tour Here - <https://youtu.be/kwkiUHt1ct4>

Council Tax Band A // EPC Rating C

Directions

M20 1HT



Map data ©2026 Google

- Available May
- One Bedroom
- Apartment
- Furnished
- Great Location
- Close to all Local Amenities
- Modern Decor Throughout
- Parking Available
- Council Tax Band A
- EPC Rating C

Postcode - M20 1HT

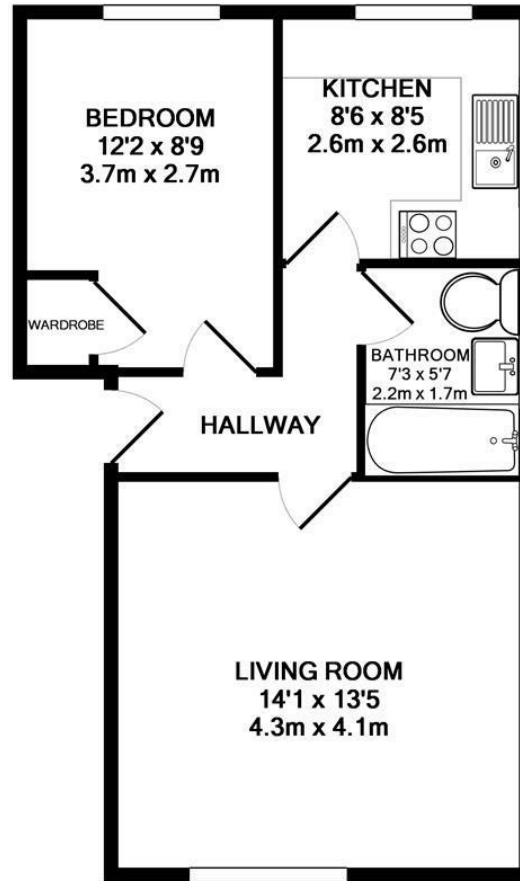
EPC Rating - C

Floor Area - sq ft

Local Authority - Manchester

Council Tax - A





**FLAT 4, CUTHBERT COURT, MALVERN GROVE
TOTAL APPROX. FLOOR AREA 447 SQ.FT. (41.5 SQ.M.)**

Whilst every attempt has been made to ensure the accuracy of the floor plan contained here, measurements of doors, windows, rooms and any other items are approximate and no responsibility is taken for any error, omission, or mis-statement. This plan is for illustrative purposes only and should be used as such by any prospective purchaser. The services, systems and appliances shown have not been tested and no guarantee as to their operability or efficiency can be given
Made with Metropix ©2014



These particulars are believed to be accurate but they are not guaranteed and do not form a contract. Neither Jordan Fishwick nor the vendor or lessor accept any responsibility in respect of these particulars, which are not intended to be statements or representations of fact and any intending purchaser or lessee must satisfy himself by inspection or otherwise as to the correctness of each of the statements contained in these particulars. Any floorplans on this brochure are for illustrative purposes only and are not necessarily to scale.

Offices also at: Wilmslow, Macclesfield, Hale, Sale, Chorlton, Glossop, Manchester & Salford

757-759 Wilmslow Road, Didsbury Village, Manchester

0161 445 4480

didsbury@jordanfishwick.co.uk
www.jordanfishwick.co.uk