



## Ridley Avenue, W13

£725,000

A beautifully presented two bedroom cottage, combining period features (fireplaces and restored sash windows) with a wonderful modern interior. This family home offers such an enviable aspect backing onto Fielding Walk.

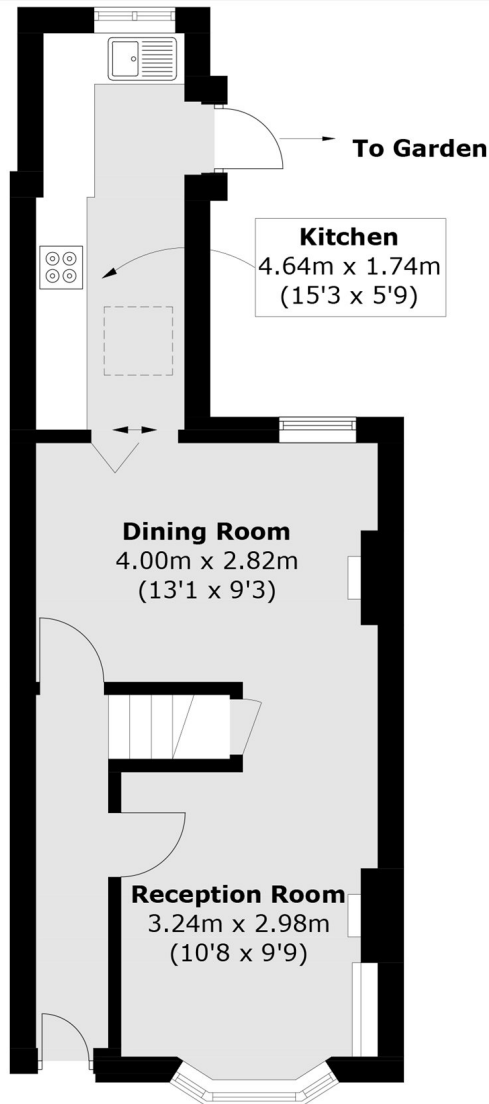


Consists of entrance hall, reception room, dining room and fitted kitchen. On the first floor there are two bedrooms and a modern bathroom. Huge potential to extend (STPP) like many neighbouring properties have done.

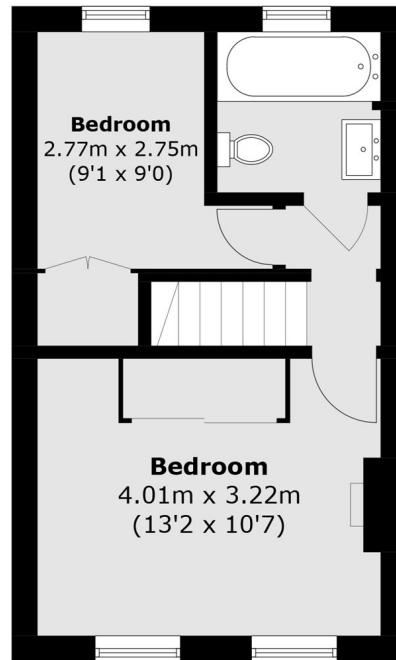
Enviably located within the Fielding School catchment, close to an excellent range of local shops, parks and Northfields tube (Piccadilly Line) as well as West Ealing station (Elizabeth Line). Viewing comes highly recommended.

- Two Bedrooms • Enviably Located • Excellent Transport Links •
- Period Cottage • Heart Of Northfields • Ofsted Outstanding Schools •





**Ground Floor**



**First Floor**

Total area (approx.): 65.8 sq. m (708.2 sq. ft)

Robertson Smith & Kempson Northfields Sales  
116 Northfield Avenue,  
London, W13 9RT  
020 8566 2340  
[northfieldssales@robertsonsmithandkempson.co.uk](mailto:northfieldssales@robertsonsmithandkempson.co.uk)

Energy Rating: D. We aim to make our particulars both accurate and reliable. However they are not guaranteed; nor do they form part of an offer or contract. If you require clarification on any points then please contact us, especially if you're traveling some distance to view. Please note that appliances and heating systems have not been tested and therefore no warranties can be given as to their good working order.