



Connells

Signet Square
Coventry



Property Description

A three bedroom town house located in a popular development close to the City Centre and Coventry University. The accommodation briefly comprises: ground floor w/c, lounge and a fitted kitchen. To the first floor there are two good sized bedrooms and a fitted bathroom. To the second floor there is the master bedroom with an en-suite shower room. Outside there is allocated parking and a rear garden.

Approach

Double glazed front door.

Entrance Hall

Stairs to first floor, cupboard, radiator.

Guest W/C

Comprising, toilet, wash hand basin, radiator and double glazed window to the front elevation.

Lounge

Radiator, wooden flooring and double glazed patio doors opening onto the rear garden.

Fitted Kitchen

Wall and base mounted units incorporating an inset one and a half bowl single drainer stainless steel sink unit with work surfaces and tiled splashbacks over. Integrated electric oven and gas hob with cookerhood over, plumbing for automatic washing machine, space for domestic appliance, radiator, double glazed window to the front elevation.

First Floor Landing

Stairs to second floor and doors to;

Bedroom Two

Two double glazed windows to the front elevation, built-in wardrobe and radiator.

Bedroom Three

Double glazed window to the rear elevation, built-in wardrobe and radiator.

Fitted Bathroom

Tiled, comprising bath with mixer tap, wash hand basin, toilet, radiator, extractor fan.

Second Floor

Master Bedroom

Double glazed window to the front elevation, fitted wardrobe and loft hatch.

En-Suite

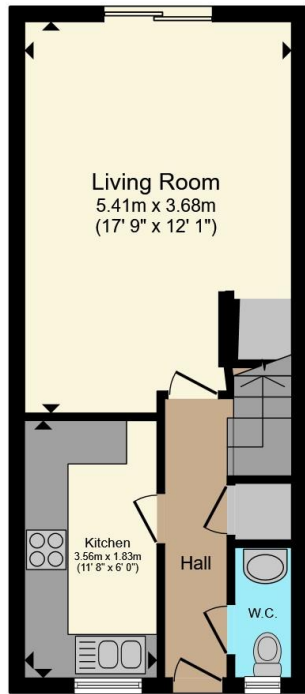
Tiled, comprising shower cubicle, wash hand basin, toilet, radiator, extractor fan.

Outside

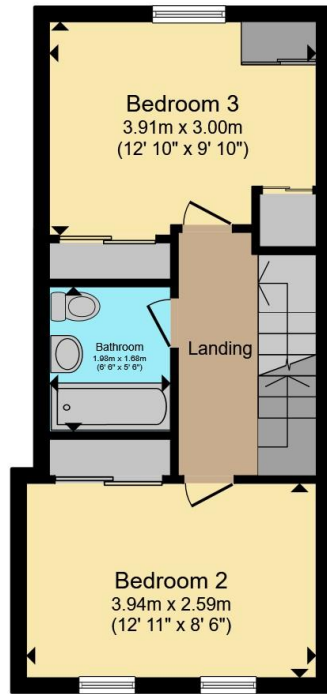
Rear Garden

Paved area beyond being laid to lawn with a range of shrubs and flowers.

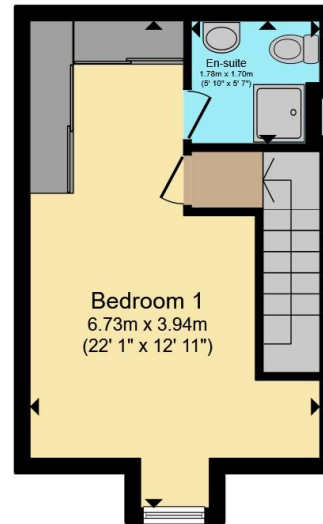




Ground Floor



First Floor



Second Floor



Total floor area 92.2 m² (992 sq.ft.) approx

This floor plan is for illustrative purposes only. It is not drawn to scale. Any measurements, floor areas (including any total floor area), openings and orientation are approximate. No details are guaranteed, they cannot be relied upon for any purpose and they do not form part of any agreement. No liability is taken for any error, omission or misstatement. A party must rely upon its own inspection(s). Powered by www.propertybox.io



To view this property please contact Connells on

T 02476 553 093
E coventry@connells.co.uk

38 New Union Street
 COVENTRY CV1 2HN

EPC Rating: Council Tax
 Awaited Band: C

view this property online connells.co.uk/Property/COV323744

Tenure: Freehold



1. MONEY LAUNDERING REGULATIONS Intending purchasers will be asked to produce identification documentation at a later stage and we would ask for your co-operation in order that there will be no delay in agreeing the sale. 2. These particulars do not constitute part or all of an offer or contract. 3. The measurements indicated are supplied for guidance only and as such must be considered incorrect. Potential buyers are advised to recheck measurements before committing to any expense. 4. We have not tested any apparatus, equipment, fixtures, fittings or services and it is in the buyers interest to check the working condition of any appliances.

Connells Residential is registered in England and Wales under company number 1489613, Registered Office is Cumbria House, 16-20 Hockliffe Street, Leighton Buzzard, Bedfordshire, LU7 1GN. VAT Registration Number is 500 2481 05.

See all our properties at www.connells.co.uk | www.rightmove.co.uk | www.zoopla.co.uk

Property Ref: COV323744 - 0002