



Church Gardens, W5

£795,000

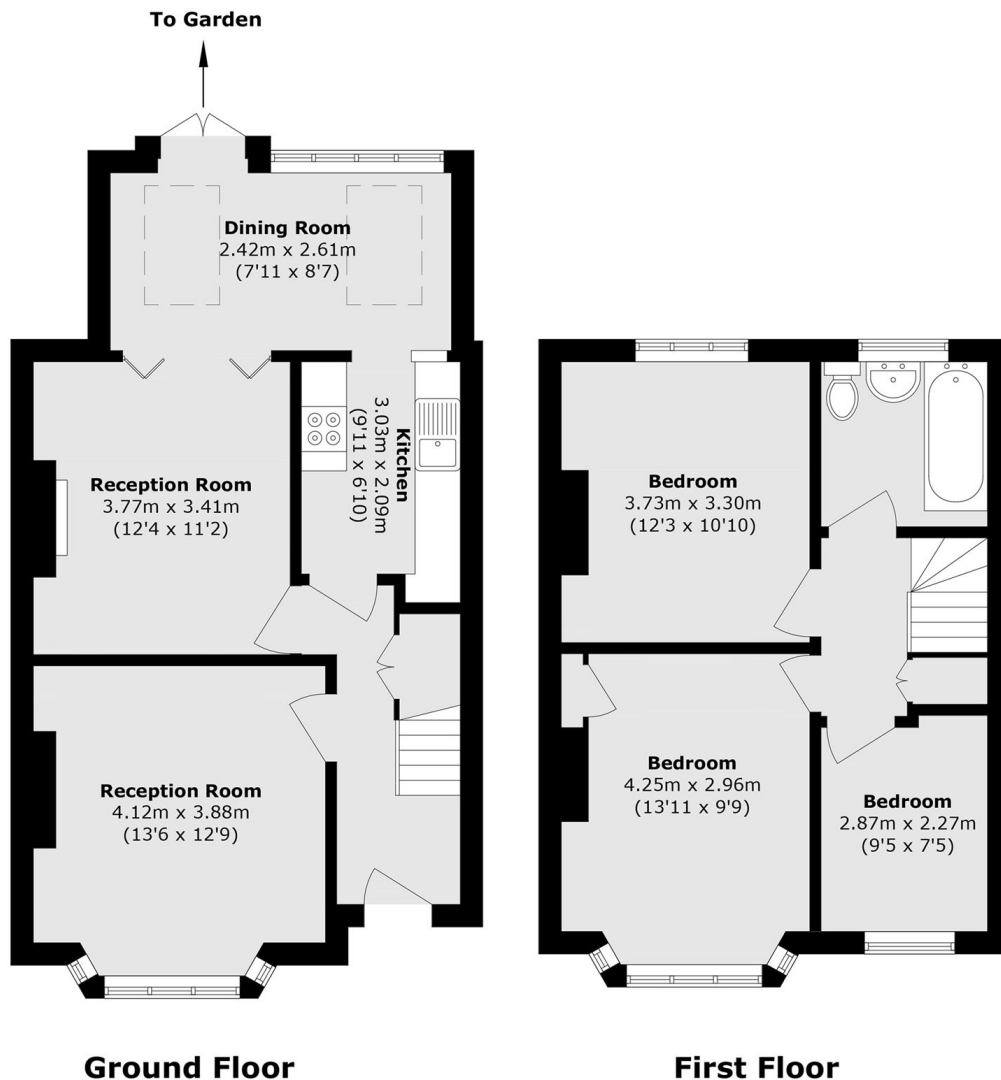
This bright three-bedroom mid-terrace home benefits from an east/west aspect, filling it with natural light, and offers a great opportunity for a new family to make it their own. The ground floor features a front reception room, a rear reception opening onto the garden, and a galley kitchen, with three bedrooms and a family bathroom upstairs.

Located on Church Gardens in South Ealing, the property enjoys a village feel while being within walking distance of Walpole Park and Lammas Park. The area is highly regarded for its green spaces, community atmosphere, and convenient transport links.

Features

- Three Bedrooms
- Two Bathrooms
- West Facing Garden
- Potential To Extend
- Prime Location
- No Onward Chain

Church Gardens, London, W5



Total area (approx.): 99.2 sq. m (1067.7 sq. ft)