



**Guide Price**  
**£190,000**

**Leasehold**

2x  1x  1x 

**Bishops Close,  
Nettlestead, Maidstone,  
Kent, ME18**

*Wards*  
Helping you move forwards



## Main features

- Large private garden and ample off road parking
- Offered chain free!
- Close to Watlington train station, with quick access to the A228 leading to the motorway
- Surrounded by stunning countryside
- Large living area and separate kitchen

## Accommodation

### FIRST FLOOR

Kitchen: 10'8 x 8'7 (3.25m x 2.62m)

Lounge: 14'7 (4.45m) narrowing to 13'0 (3.97m) x 10'10 (3.30m)

Bedroom 1: 11'11 x 11'0 (3.63m x 3.36m)

Bedroom 2: 11'1 (3.38m) narrowing to 10'1 (3.08m) x 8'10 (2.69m)

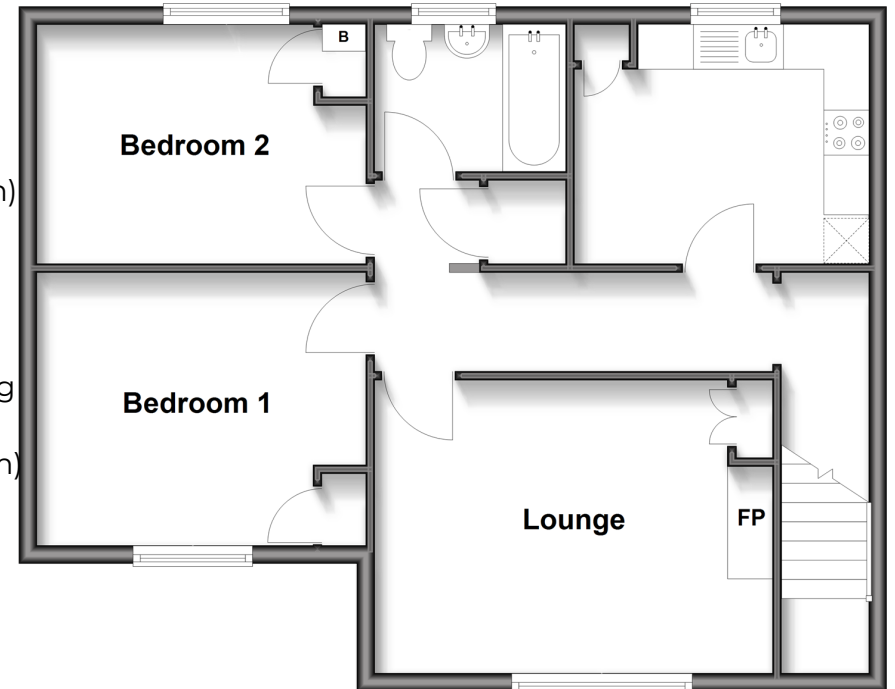
Bathroom: 7'0 x 5'9 (2.14m x 1.75m)

### OUTSIDE

Off Road Parking  
Garden

## First Floor Maisonette

Approx. 61.5 sq. metres (661.7 sq. feet)



Call Paddock Wood - 01892 836877 ■ [wardsof Kent.co.uk](http://wardsof Kent.co.uk)

- Legal advice should be taken to verify fixtures/fittings, planning, alterations and/or lease details
- Appliances & services are untested, dimensions are approximate and floor plans are not to scale



13627439/20260210/EN/GD