



**Eastbourne Avenue, Gosport, PO12 4NU**

**welcome to**

## **Eastbourne Avenue, Gosport**

Much improved three-bedroom end-of-terrace home in Elson, fully upgraded with new electrics, modern fitted kitchen, and a re-fitted family bathroom. Features a spacious lounge and dining area, low-maintenance enclosed garden, and block-paved driveway for off-street parking. No chain ahead!

### **Entrance Hall**

Upvc front door, stairs to first floor with cupboard under, radiator.

### **Lounge**

10' 5" into bay x 13' 3" ( 3.17m into bay x 4.04m )  
Upvc double glazed box bay window to front aspect, radiator.

### **Dining Room**

11' 5" x 9' 8" ( 3.48m x 2.95m )  
Upvc double glazed window to rear aspect, radiator.

### **Fitted Kitchen**

14' 3" max x 8' max ( 4.34m max x 2.44m max )  
Upvc double glazed door and window to rear aspect, eye and base level units with work surface over, tiled surrounds, stainless steel one and a half bowl sink drainer, wall mounted boiler, oven with hob and hood, radiator, space for fridge/freezer, plumbing for washing machine.

### **Landing**

Access to loft void, storage cupboard.

### **Bedroom One**

13' 8" into bay x 9' 9" ( 4.17m into bay x 2.97m )  
Upvc double glazed box bay window to front aspect, radiator.

### **Bedroom Two**

11' 5" x 10' 5" ( 3.48m x 3.17m )  
Upvc double glazed window to rear aspect, radiator, airing cupboard.

### **Bedroom Three**

7' 1" x 5' 9" ( 2.16m x 1.75m )  
Upvc double glazed window to front aspect, radiator.

### **Family Bathroom**

Upvc obscure double glazed window to rear aspect, heated towel rail, wash hand basin, wc, bath with shower attachment and screen, extractor fan, tiled surrounds.

### **Rear Garden**

Low maintenance garden, enclosed to perimeters, vehicle and pedestrian rear access.

### **Driveway**

Block paved driveway providing off street parking.





***view this property online*** [fox-and-sons.co.uk/Property/GOS113170](https://fox-and-sons.co.uk/Property/GOS113170)



welcome to

## Eastbourne Avenue, Gosport

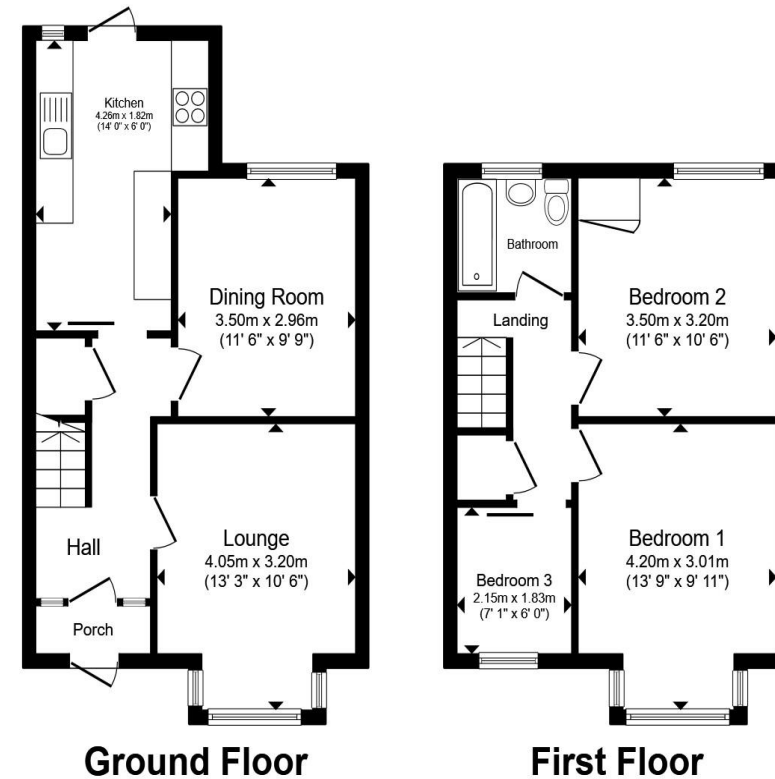
- Three bedroom end of terrace home located in Elson
- Much improved by the current owners, including new electrics
- Fitted kitchen
- Lounge & Dining room
- Re-fitted family bathroom

Tenure: Freehold EPC Rating: D

Council Tax Band: C

offers over

**£270,000**



Total floor area 80.4 m<sup>2</sup> (865 sq.ft.) approx

This floor plan is for illustrative purposes only. It is not drawn to scale. Any measurements, floor areas (including any total floor area), openings and orientation are approximate. No details are guaranteed, they cannot be relied upon for any purpose and they do not form part of any agreement. No liability is taken for any error, omission or misstatement. A party must rely upon its own inspection(s). Powered by [www.propertybox.io](http://www.propertybox.io)



view this property online [fox-and-sons.co.uk/Property/GOS113170](http://fox-and-sons.co.uk/Property/GOS113170)



Property Ref:  
GOS113170 - 0008

1. MONEY LAUNDERING REGULATIONS Intending purchasers will be asked to produce identification documentation at a later stage and we would ask for your co-operation in order that there is no delay in agreeing the sale. 2. These particulars do not constitute part or all of an offer or contract. 3. The measurements indicated are supplied for guidance only and as such must be considered incorrect. Potential buyers are advised to recheck measurements before committing to any expense. 4. We have not tested any apparatus, equipment, fixtures or services and it is in the buyers interest to check the working condition of any appliances. 5. Where an EPC, or a Home Report (Scotland only) is held for this property, it is available for inspection at the branch by appointment. If you require a printed version of a Home Report, you will need to pay a reasonable production charge reflecting printing and other costs. 6. We are not able to offer an opinion either written or verbal on the content of these reports and this must be obtained from your legal representative. 7. Whilst we take care in preparing these reports, a buyer should ensure that his/her legal representative confirms as soon as possible all matters relating to title including the extent and boundaries of the property and other important matters before exchange of contracts.

Fox & Sons is a trading name of Sequence (UK) Limited which is registered in England and Wales under company number 4268443, Registered Office is Cumbria House, 16-20 Hockliffe Street, Leighton Buzzard, Bedfordshire, LU7 1GN. VAT Registration Number is 500 2481 05.



**023 9250 3733**



[Gosport@fox-and-sons.co.uk](mailto:Gosport@fox-and-sons.co.uk)



10 High Street, GOSPORT, Hampshire, PO12 1BX



[fox-and-sons.co.uk](http://fox-and-sons.co.uk)