



AWARDED FOR
MARKETING | SERVICE | RESULTS



13 Buxton House Oxhey Drive, Watford
£350,000



 fairfieldestates



13 Buxton House Oxhey Drive

Watford, Watford

SPACIOUS & MODERN TWO BED / TWO BATH FLAT OFFERED TO THE MARKET WITH NO UPPER CHAIN. Early viewing is highly recommended to appreciate the quality and convenience on offer.

Council Tax band: C

Tenure: Leasehold

EPC Energy Efficiency Rating: B

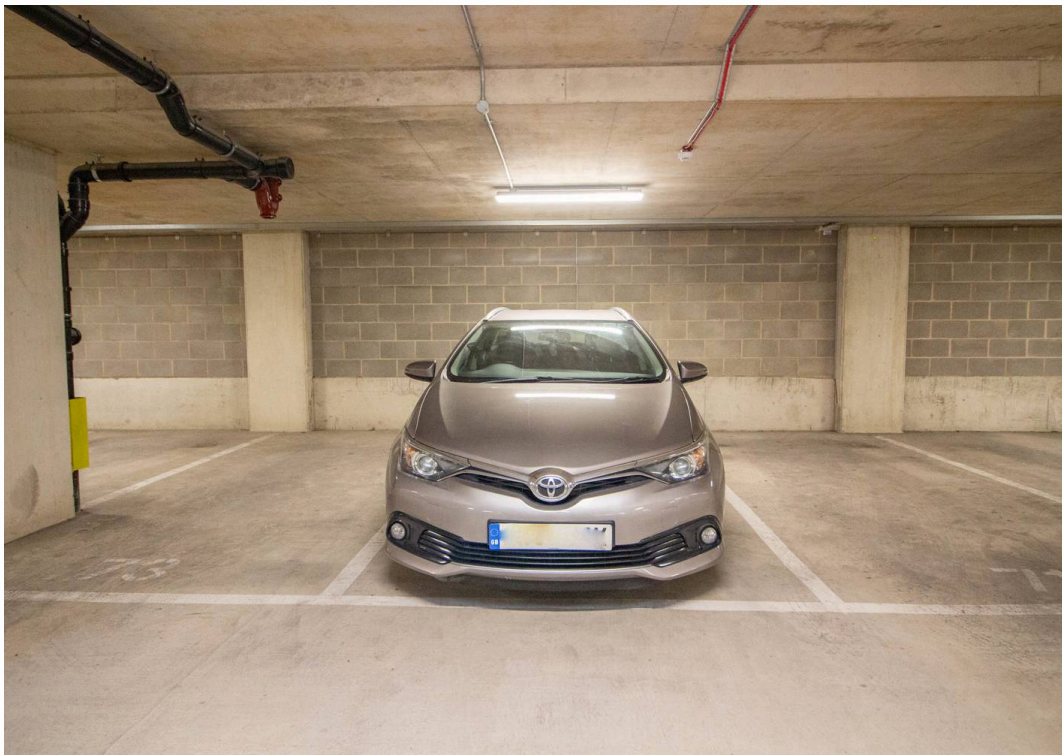
EPC Environmental Impact Rating: B

- NO UPPER CHAIN
- TWO DOUBLE BEDROOMS / TWO BATHROOMS
- SECURE ALLOCATED UNDERGROUND PARKING
- SECURITY ENTRY FOB FOR INTERNAL DOORS & LIFT
- WALKING DISTANCE TO CARPENDERS PARK STATION
- LONG LEASE
- PRIVATE BALCONY ACCESS FROM LOUNGE
- SECURE & PRIVATE RECREATIONAL PLAY AREA

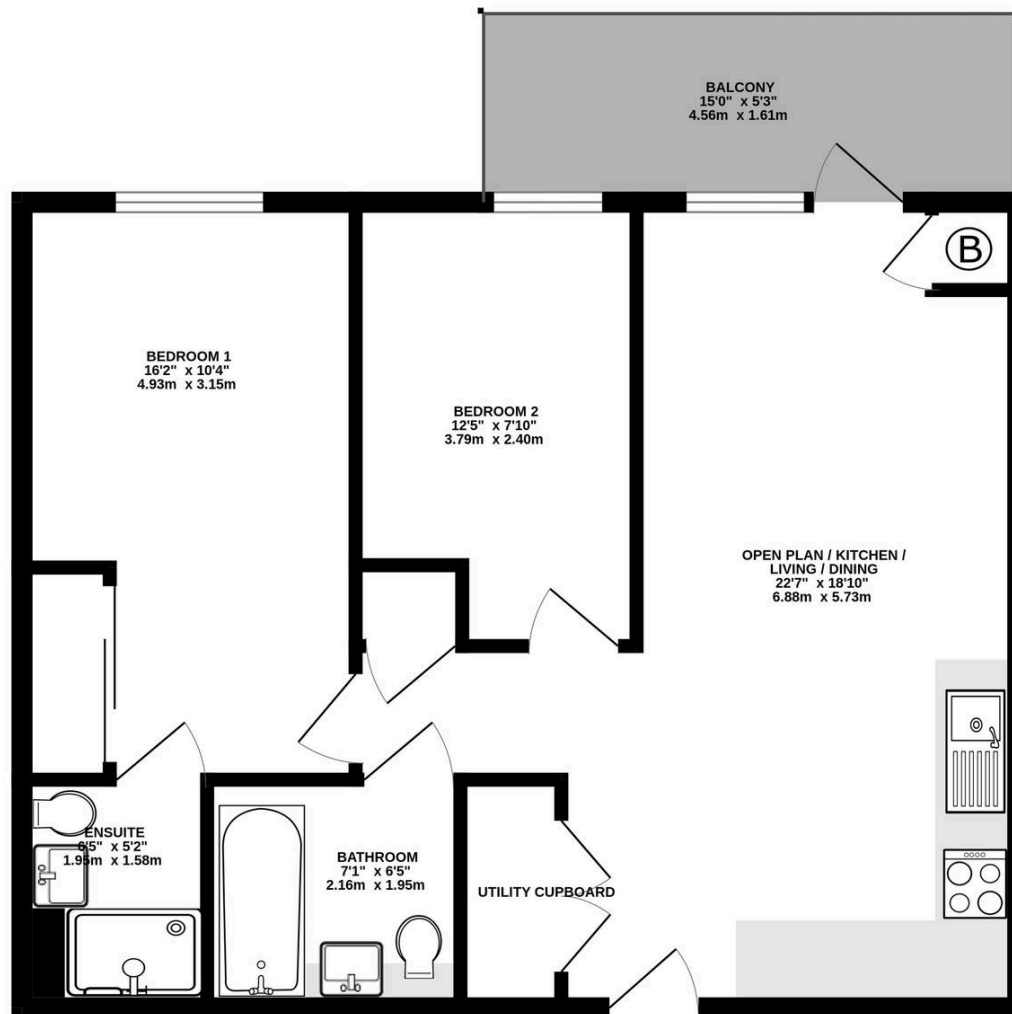












Whilst every attempt has been made to ensure the accuracy of the floorplan contained here, measurements of doors, windows, rooms and any other items are approximate and no responsibility is taken for any error, omission or mis-statement. This plan is for illustrative purposes only and should be used as such by any prospective purchaser. The services, systems and appliances shown have not been tested and no guarantee as to their operability or efficiency can be given.
 Made with Metropix ©2026

