

WILKINSON

SALES • LETTINGS • MANAGEMENT

£195,000

Gravel Walk, Tewkesbury, GL20



 2

Bedrooms

 1

Bathroom

101 High Street, Tewkesbury, Gloucestershire, GL20 5JZ |
Info@wilkinsonslm.co.uk

01684 367736



- Terraced House
- Lounge with Log Burner
- Kitchen
- Downstairs Bathroom
- Porch
- Two Double Bedrooms
- Cellar
- Rear Garden with Outbuilding
- UPVC Double Glazing
- Gas Central Heating

NEW PRICE Wilkinson SLM are delighted to present this charming two-bedroom terraced house, nestled in the heart of Tewkesbury Town and brimming with character.

The ground floor welcomes you with a cosy, cottage-style lounge featuring a charming log burner—perfect for those cosy evenings. A floor hatch reveals stairs to a cellar, which has been thoughtfully upgraded with damp course and concrete slab flooring. With plumbing for a washing machine, it offers a practical and versatile additional space.

An open doorway from the lounge leads to the kitchen, complete with a range of base and wall units and space for a fridge, freezer, and oven. A bi-fold door at the rear of the kitchen opens to the bathroom, while a patio door provides access to the courtyard and rear garden.

Stairs from the lounge take you to the first floor, where you'll find a spacious double bedroom featuring a useful storage cupboard above the stairs. A further staircase from the landing leads to the second floor, revealing a bright and airy open-plan bedroom.

Outside, the rear of the property boasts a delightful courtyard garden with an outbuilding that currently houses a tumble dryer, along with a raised seating area surrounded by mature shrubs—ideal for enjoying the outdoors.

Additional benefits include an entrance porch, gas central heating, and UPVC double glazing throughout.

Porch 2' 8" x 5' 4" (0.81m x 1.63m)

Lounge 10' 11" x 12' 2" (3.33m x 3.71m)

Maximum Measurements

Kitchen 6' 10" x 6' 11" (2.08m x 2.11m)

Bathroom 4' 3" x 6' 9" (1.30m x 2.06m)

Cellar 10' 11" x 12' 2" (3.33m x 3.71m)

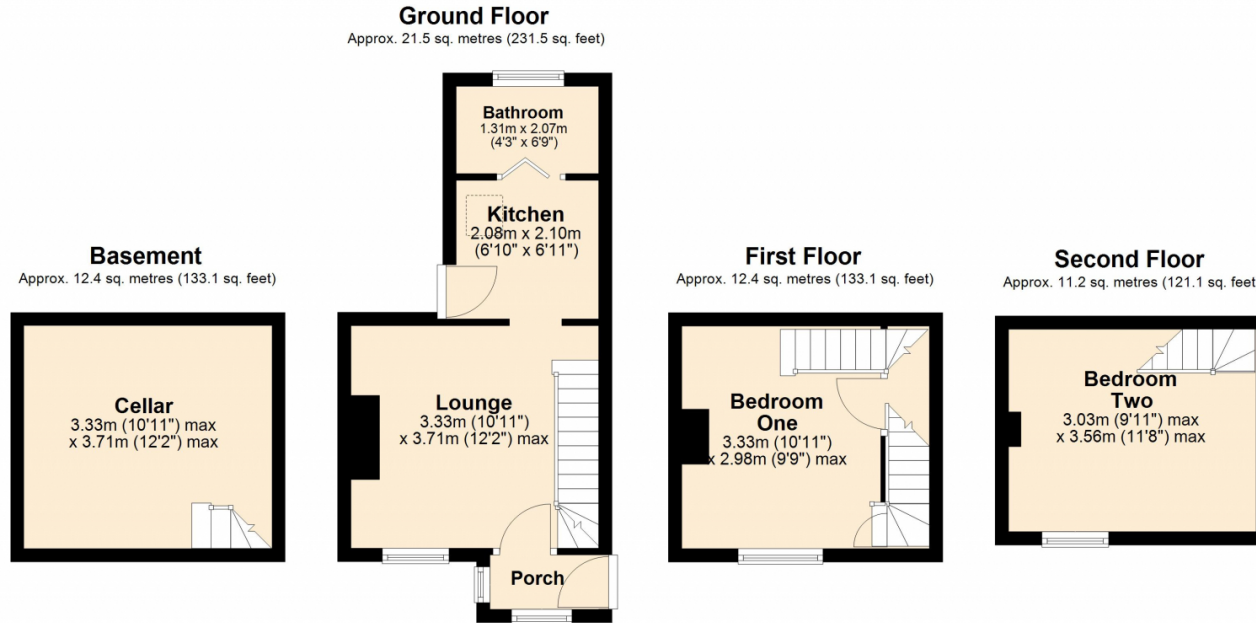
Maximum measurements

Bedroom One 10' 11" x 9' 9" (3.33m x 2.97m)

Maximum Measurements

Bedroom Two 9' 11" x 11' 8" (3.02m x 3.56m)

Maximum Measurements



Total area: approx. 57.5 sq. metres (618.9 sq. feet)

Energy Efficiency Rating		Current	Potential
Very energy efficient - lower running costs			
(92+)	A		
(81-91)	B		83
(69-80)	C		
(55-68)	D	61	
(39-54)	E		
(21-38)	F		
(1-20)	G		
Not energy efficient - higher running costs			
England, Scotland & Wales		EU Directive 2002/91/EC	

Address: Gravel Walk, Tewkesbury, GL20

