



Tenlands Drive, Prescot, L34

£1,295 Per Month

Prescot Park is located within Prescot, Knowsley. This development is part of a wider scheme to transform the area. Many house builders are working alongside each other to offer a stunning selection of new homes and local communities.

The Trent is a well-proportioned double fronted home. Upon walking through the door you will find a large living room to one side and a large open plan kitchen / dining room to the other. Both of these spacious rooms also benefit from an abundance of natural light due to the French windows leading on to your own private garden. You will also find a handy WC downstairs.

Upstairs the master bedroom offers a lovely space to relax, spanning the side of the property. The master bedroom also comes with fitted, mirrored wardrobes. Along the hall you will find another double bedroom, single bedroom and full bathroom suite, with separate bath and shower, as well as a storage cupboard to keep everything neat and tidy.

The Trent is the perfect home for growing families looking for a traditional home with a fantastic layout.

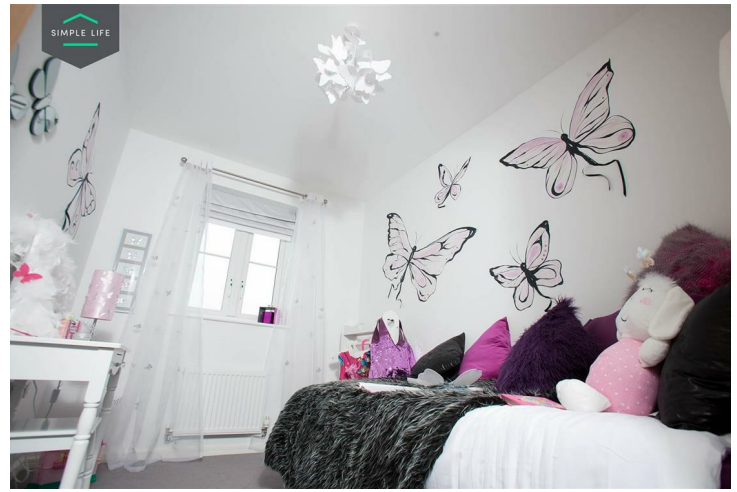
The amenities of Prescot town centre are less than 1 mile away, providing a medical centre, post office, many high street outlets, banks and a selection of independent retailers. Retail therapy is always close by with Cables Retail Park situated 1 mile from your home, with many high street favourites, including Home Bargains, M&S food store, Next, Boots and a Tesco superstore.

Getting about is easy with Prescot train station just 1.1 miles away and Huyton train station 1.7 miles away, supplying direct services to Liverpool and Manchester. Regular bus services are also available on Manchester Road, a short walk away, arriving every 20 minutes between St Helens and Liverpool.

To visit Prescot Park, please use postcode L34 1NS in your Satnav and look for Home Bargains, just off of Manchester Road.

Deposit: £1490
Holding deposit: £290
Unfurnished
Council tax: B
Available 10th August 2026





Key Features

- Private driveway
- Fitted wardrobes to master bedroom
- Fridge freezer
- Oven and hob
- Dark ash style worktops
- Security alarm system
- Dishwasher
- Washing/drying machine
- Light wash wood effect flooring
- Modern, white kitchen units

Location

