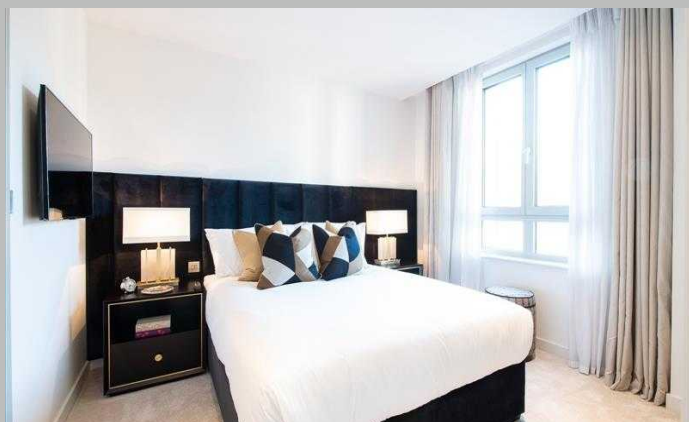


**West End Gate, Westminster, W2**





### Key Features

- Beautiful two-bedroom apartment
- High-spec kitchen appliances & composite stone worktops
- Direct access to fantastic private balcony
- Access to onsite gym, cinema, sauna and pool available
- Close to local amenities

### Description

A beautiful two-bedroom apartment situated on the 3rd floor of the magnificent West End Gate development in Edgware. It comprises a wonderfully spacious reception area and a large open-plan kitchen with fully integrated Miele and Siemens appliances. The kitchen features a wine chiller, induction hobs and gorgeous worktops made from composite stone. With bright floor length windows and direct access to the fantastic private balcony from the living room, this apartment is perfect for socialising. The stylish double bedrooms have been refurbished to a very high standard with modern furnishings, and of the two bathrooms, one of them is an ensuite with a bath. The reception area provides ample light and is equipped with a Samsung Smart TV and Samsung sound bar. The apartment features comfort cooling throughout and is also pet friendly. The building itself offers residents amazing facilities such as a swimming pool, sauna, steam room, cinema and boardrooms, a gym and 24-hour concierge. Car parking, lifts and bike storage are also available, plus an onsite building manager for maintenance emergencies.

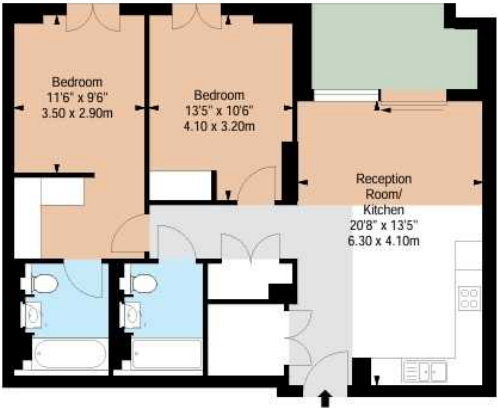
### Situation

This elegant apartment is located near the vibrant areas of Paddington and Little Venice, with plenty of transport links, shops and restaurants. The closest tube station is Edgware Road (Circle and District, Hammersmith & City, Bakerloo lines), only a 4-minute walk away.

**West End Gate,  
Westminster, W2**

Terms

- Price:** £1,750.00 per week
- Furnished/Unfurnished:** Furnished or Unfurnished
- Local Authority/Council Tax:** Westminster Band F £1,469.26.
- Viewing** To view, please call 020 7043 8431
- Parking** Residents Parking
- Fees:** M2 Property do not charge tenant administration fees.  
We are members of The Property Ombudsman Redress Scheme for Residential Sales and Lettings (Membership No. D00776) and Client Money Protect (Membership No. CMP003231).



THIRD FLOOR



APPROX. GROSS INTERNAL AREA \*  
843 Ft² - 78.31 M²

Property Details: <b>FLAT 31</b> <b>GARRETT MANSIONS</b> <b>WEST END GATE</b> <b>EDGWARE ROAD</b> <b>LONDON</b> <b>W2</b>	Surveyed and Drawn By <b>BKR</b> Hedonway Work Space 1 Empire Mews London SW16 2BF  Tel: 0345 257 2023 info@bkrfloorplans.co.uk www.bkrfloorplans.co.uk  © BKR 2020
SCALE 1:100 @ A4 Plans Drawn: 14.01.2020	



We have prepared these property particulars for the general guidance of intending purchasers or lessees. They are not designed to constitute a part of an offer or contract. For the purpose of the Property Misdescriptions Act 1991 and subsequent amendments we have taken all reasonable steps to ensure the accuracy of the details contained herein, however such statements are not to be relied on as a representation of fact and do not constitute any warranty or representation by M2 Property or the Vendors or Lessors. All photographs, measurements, floor plans and distances are given as a guide and should be checked before purchasing furniture, carpets, fixtures or fittings. Intending Purchasers or Lessees should satisfy themselves as to the accuracy of each of the statements contained in these particulars and should rely solely upon their own judgement, inspection and enquiries before entering into any contract. The floor plan if shown is intended as a guide to layout only and must not be relied on for any other purpose. It is not to scale. The copyright of all details, photographs and floor plans contained in these property particulars remain exclusive to M2 Property.