



Eardley Crescent, SW5

£923 Per week

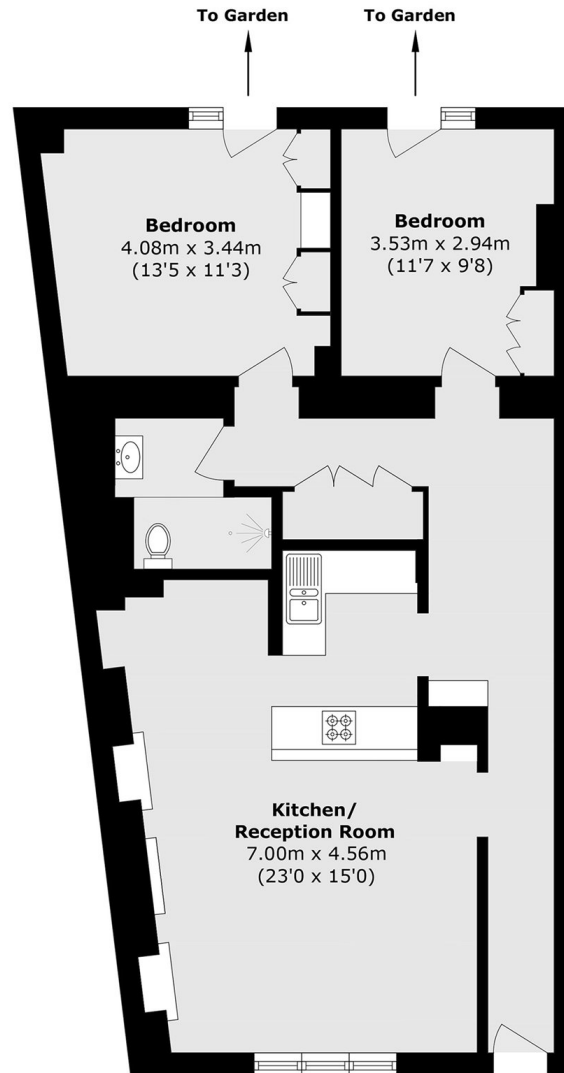
A spacious two bedroom flat with direct access to its own large private garden and conservatory. The flat benefits from open plan living and built in storage in both bedrooms.

Eardley Crescent is a quiet residential street located between West Brompton and Earls Court Tube Station. With Earls Court Road close by you have a selection of shops and cafés.

Features

- Two Bedrooms
- One Bathroom
- Open Plan
- Garden
- Conservatory
- Built In Storage

Eardley Crescent, London, SW5



Lower Ground Floor

Total area (approx.): 82.4 sq. m (886.9 sq. ft)