



Flat 302, Westminster Tower 3 Albert Embankment, London, SE1 7SP
£2,600,000



Flat 302, Westminster Tower 3 Albert Embankment, London, SE1 7SP

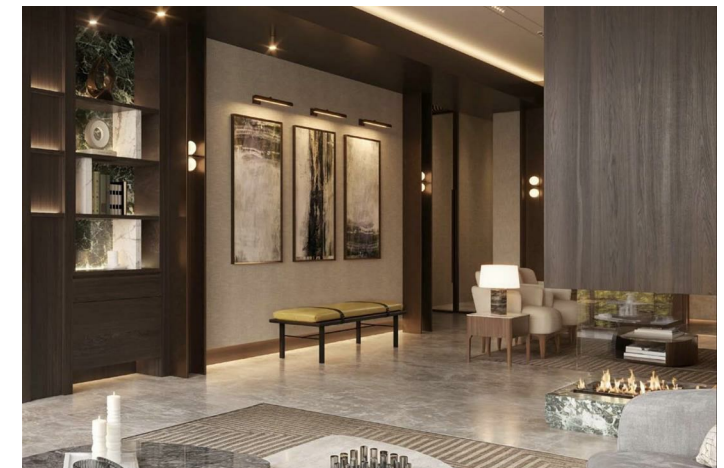
£2,600,000

Q1-Q2 2028 Completion | Views of Battersea Power Station | 24/7 Concierge | Gym | Cinema Room |
Reading Room | Lounges | Great Transport Links | WeChat: CLH-Consultant.

Description



Situation



null
Council Tax Band: New Build
Available:

Floor Plans

THE PEDLAR 2 BEDROOM APARTMENT

LIVING / DINING	7.20m x 6.40m	23'7" x 20'12"
KITCHEN	3.50m x 2.40m	11'6" x 7'10"
BEDROOM 1	3.80m x 9.00m	12'6" x 29'6"
BEDROOM 2	3.50m x 9.00m	11'6" x 29'6"

Area Map



Energy Performance Graph

These particulars, whilst believed to be accurate are set out as a general outline only for guidance and do not constitute any part of an offer or contract. Intending purchasers should not rely on them as statements of representation of fact, but must satisfy themselves by inspection or otherwise as to their accuracy. No person in this firms employment has the authority to make or give any representation or warranty in respect of the property.