



Guide Price
£230,000

Freehold

2x  1x  1x 

**Wickham Avenue,
Ramsgate, Kent, CT11**

OVER 60?

Secure this property
for up to **59% less!**

Wards
Helping you move forwards



Main features

- Private rear garden
- Off road parking
- Spacious ground floor maisonette
- A sought-after location with a path directly leading to King George VI park
- Spacious throughout

Accommodation

GROUND FLOOR

Porch

Entrance Hallway

Bedroom 1 : 12'6 x 11'8 (3.81m x 3.56m)

Bedroom 2 : 11'9 x 8'9 (3.58m x 2.67m)

Shower Room

Lounge : 12'5 x 12'0 (3.79m x 3.66m)

Kitchen : 12'7 x 8'7 (3.84m x 2.62m)

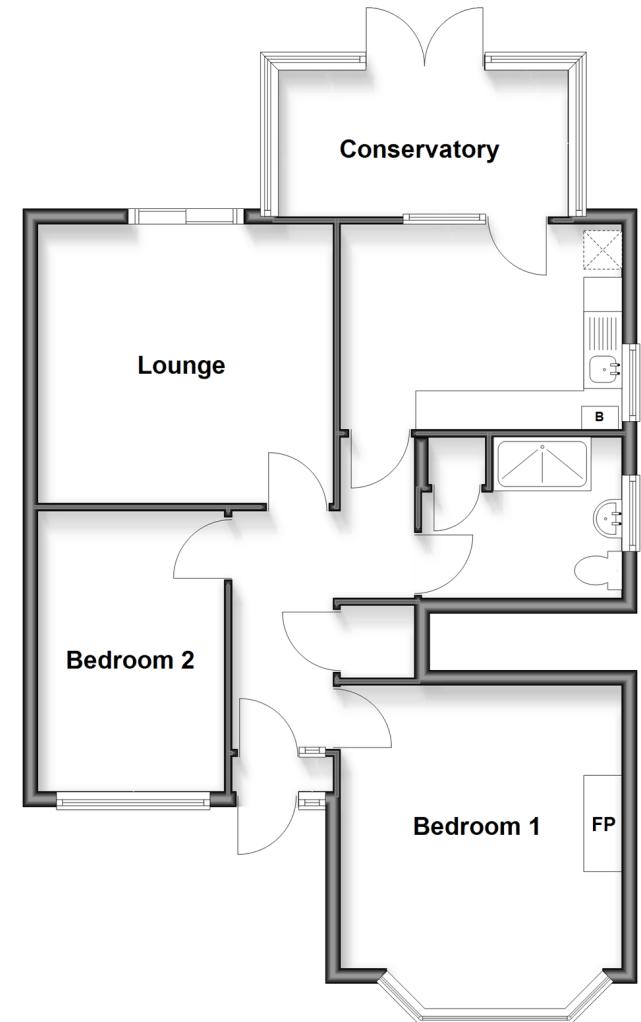
Conservatory : 12'9 x 6'2 (3.89m x 1.88m)

OUTSIDE

Off Road Parking

Garden to Rear

Ground Floor
Approx. 69.6 sq. metres (749.7 sq. feet)



Call Ramsgate - 01843 580314 ■ wardsokent.co.uk

- Legal advice should be taken to verify fixtures/fittings, planning, alterations and/or lease details
- Appliances & services are untested, dimensions are approximate and floor plans are not to scale
- Through a Homewise Home For Life Plan people aged 60+ can secure this property for up to 59% less, by purchasing a Lifetime Lease



11435095/20260218/ATN/AP