



House (EPC Rating: D)

# 5 SHEEN ROAD, WALLASEY, CH45 1HA

Per month

# £1,350 Per

**HC** Hodgson Carr  
SALES & LETTINGS

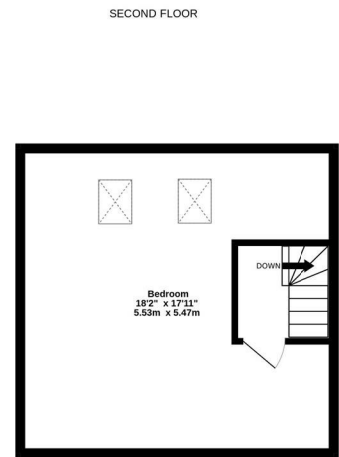
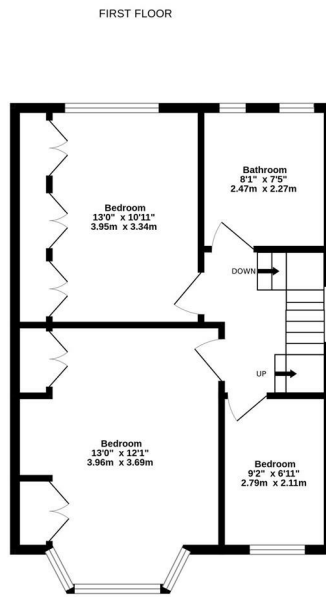
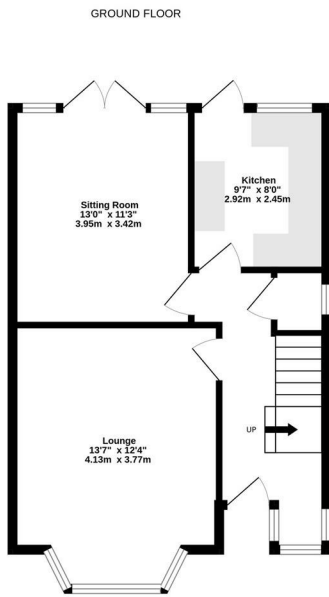


# 4 Bedroom House located in Wallasey

Nestled on the tranquil Sheen Road in Wallasey, this charming house offers a delightful blend of comfort and modern living, making it an ideal home for families. The property has been recently refurbished, ensuring a fresh and inviting atmosphere throughout.

The house features two spacious reception rooms, including a large lounge that provides a perfect space for relaxation and family gatherings. The dining room, adorned with patio doors, seamlessly connects to a generous garden, allowing for effortless outdoor entertaining and play.

With four well-proportioned bedrooms, including three located on the second floor, there is ample space for family members to enjoy their privacy. The large attic presents an exciting opportunity for further development, potentially accommodating an extra bedroom or a creative space tailored to your needs.



SHEEN ROAD, WALLASEY

TOTAL FLOOR AREA : 1353 sq.ft. (125.7 sq.m.) approx.

While every attempt is made to ensure the accuracy of this floorplan, measurements are approximate only and no responsibility is accepted by Metropix ©2023 in relation to any error, omission or mis-statement. The plan is for illustrative purposes only and should be used as such by any prospective purchaser. Made with Metropix ©2026

Council Tax Band  
**C**  
Energy Performance Graph

Call us on  
**0151 832 1888**  
[info@hodgsoncarr.com](mailto:info@hodgsoncarr.com)

Energy Efficiency Rating		Current	Potential
Very energy efficient - lower running costs			
(92 plus) <b>A</b>			
(81-91) <b>B</b>			<b>83</b>
(69-80) <b>C</b>			
(55-68) <b>D</b>		<b>64</b>	
(39-54) <b>E</b>			
(21-38) <b>F</b>			
(1-20) <b>G</b>			
Not energy efficient - higher running costs			
<b>England &amp; Wales</b>	EU Directive 2002/91/EC		

Agents Note: Whilst every care has been taken to prepare these particulars, they are for guidance purposes only. All measurements are approximate and are for general guidance purposes only and whilst every care has been taken to ensure their accuracy, they should not be relied upon and potential buyers are advised to recheck the measurements.