



UNDINE STREET, SW17

£385,000

One double bedroom
South-facing roof terrace
Chain free
Share of Freehold
Period property

ABOUT THE PROPERTY

A bright and spacious one-bedroom flat full of character and natural light. Beautifully styled throughout, this thoughtfully designed home blends period charm with modern finishes, and features a generous south-facing roof terrace ideal for relaxing or entertaining.

The property comprises of a beautiful and bright reception room, a contemporary fully fitted kitchen, a spacious double bedroom with ample built in storage and a modern bathroom. The property further benefits from a private roof terrace.

Undine Street is ideally located moments from an abundance of cafés, shops and restaurants on Tooting

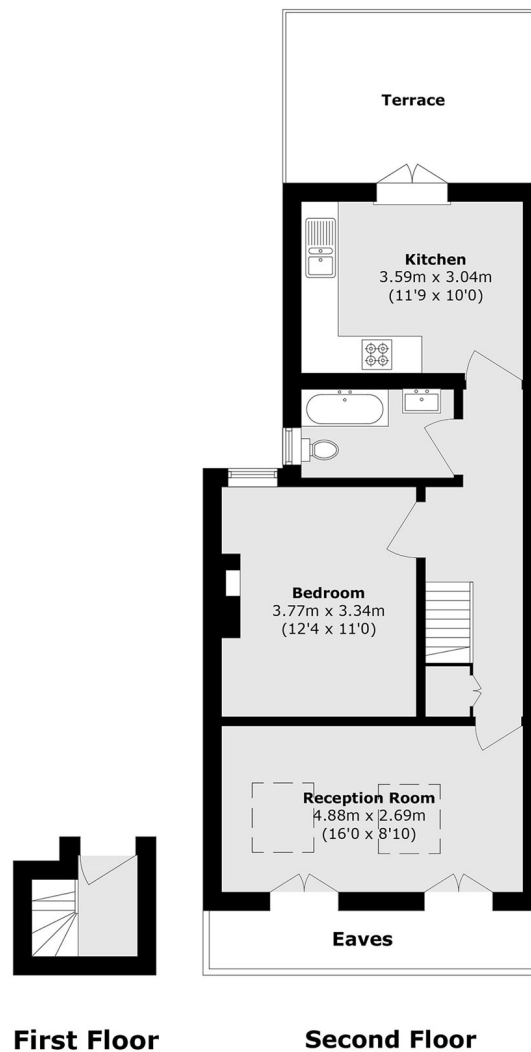








STEP INSIDE UNDINE STREET



Total area (approx.): 48.5 sq. m (522.1 sq. ft)
Terrace area (approx.): 10.0 sq. m (107.6 sq. ft)
(Excluding Eaves)

Tooting
020 8767 3655

Energy Rating: D We aim to make our particulars both accurate and reliable. However, they are not guaranteed; nor do they form part of an offer or contract. If you require clarification on any points then please contact us, especially if you're traveling some distance to view. Please note that appliances and heating systems have not been tested and therefore no warranties can be given as to their good working order

**MARSH &
PARSONS**