



MORING ROAD, SW17

£575,000

- Victorian Period Conversion
- First and Second Floor
- Excellent Condition Throughout
- Two Large Double Bedrooms
- Mezzanine Kitchen/Diner
- Potential to Extend STPP





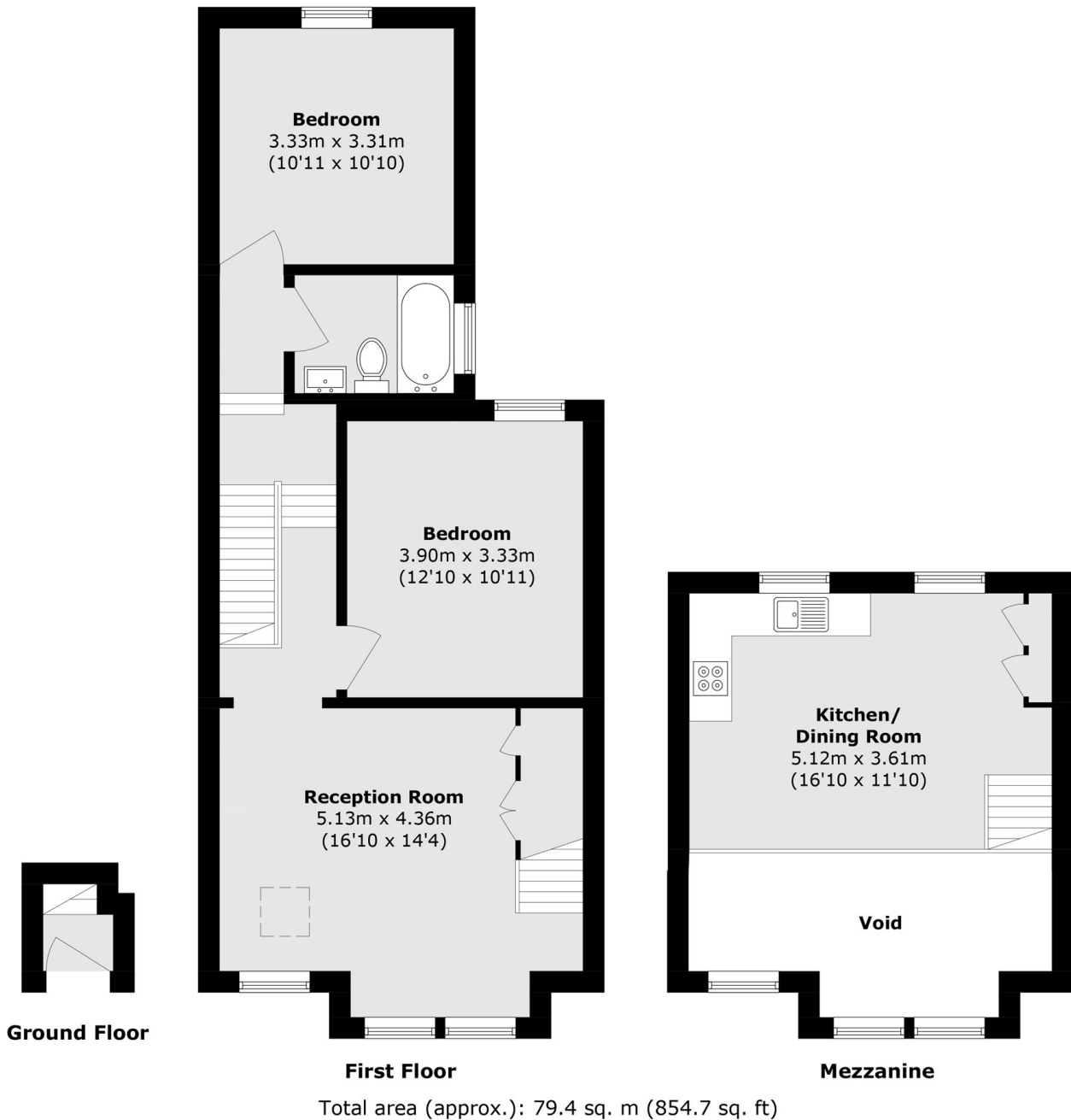
ABOUT THE HOME

A gorgeous two double bedroom, split level Victorian conversion flat. Laid across the first and second floors of this charming terrace house. Located on the highly sought after and tree lined; Moring Road. Internally the property already offers an impressive 854 Sqft, with potential to extend off the rear to add further rooms and a roof terrace. The current layout comprises; two large double bedrooms, set at different ends of the property from one another. A stylish family bathroom and a generous lounge with vaulted ceilings, plantation shutters to the window's and ample seating space. Stairs take you up to the mezzanine kitchen / dining area, showcasing a wonderful social space.

Moring Road is one of tooting Becs most sought after and desired locations. Due to its close proximity to Tooting Bec Common, Tooting Bec tube station as well as sought after local schools and the popular cafe culture.







JACKSONS TOOTING

3 Upper Tooting Road, London,
SW17 7TS
Sales: 020 8487 3175
Lettings: 020 8487 3176

Energy Rating: We aim to make our particulars both accurate and reliable. However they are not guaranteed; nor do they form part of an offer or contract. If you require clarification on any points then please contact us, especially if you're traveling some distance to view. Please note that appliances and heating systems have not been tested and therefore no warranties can be given as to their good working order.