



8 North Park Drive, Blackpool

Blackpool

Offers Over **£450,000**

8 North Park Drive

Blackpool

This stunning Detached Dormer Bungalow enjoys a coveted location in close proximity to both Stanley Park and Victoria Hospital. Upon entering through the Vestibule, one is greeted by a convenient walk-in Cloaks / Storage Cupboard before proceeding into the Hallway. The property's focal point lies in its spacious open plan Living / Dining Room, enhanced by a feature staircase leading to the first floor and underfloor heating for additional heating.

The Fitted Modern Kitchen, complete with an island and integrated appliances. Two generously sized Ground Floor Bedrooms and a Modern Bathroom cater to the needs of residents, while a luxurious En-Suite Bedroom is situated on the First Floor. The ground floor Bathroom boasts a modern bathroom adorned with a freestanding bath and walk-in shower, ensuring both comfort and style.

The property's charm extends outdoors with a landscaped garden boasting a serene pond and water feature. Various outdoor seating and entertaining areas provide idyllic spaces for relaxation and social gatherings. Ample off-road parking is accommodated by both front and rear driveways, leading to a Garage equipped with an attached Laundry Room and WC for added convenience.

Encompassing both practicality and elegance, this property epitomises modern living at its finest. Perfectly combining contemporary fixtures with traditional charm, this home offers a harmonious blend of comfort and sophistication. With its prime location and abundance of desirable features, this Detached Dormer Bungalow presents a rare opportunity for discerning buyers seeking a refined living experience in a sought-after residential area.

Council Tax band: F

Tenure: Freehold

- Detached Dormer Bungalow in prime residential location close to Stanley Park and Victoria Hospital
- Entrance Vestibule with walk-in Cloaks / Storage Cupboard, Hallway, Spacious open plan Living / Dining Room with feature staircase
- Fitted Modern kitchen with island and integrated appliances, 2 Ground Floor Bedrooms, Modern Bathroom plus 1 En-Suite Bedroom to First Floor





Vestibule
8' 5" x 4' 11" (2.56m x 1.50m)

Store
5' 0" x 6' 4" (1.52m x 1.93m)

Hallway
3' 6" x 16' 10" (1.06m x 5.13m)

Living Room
15' 8" x 19' 1" (4.78m x 5.82m)

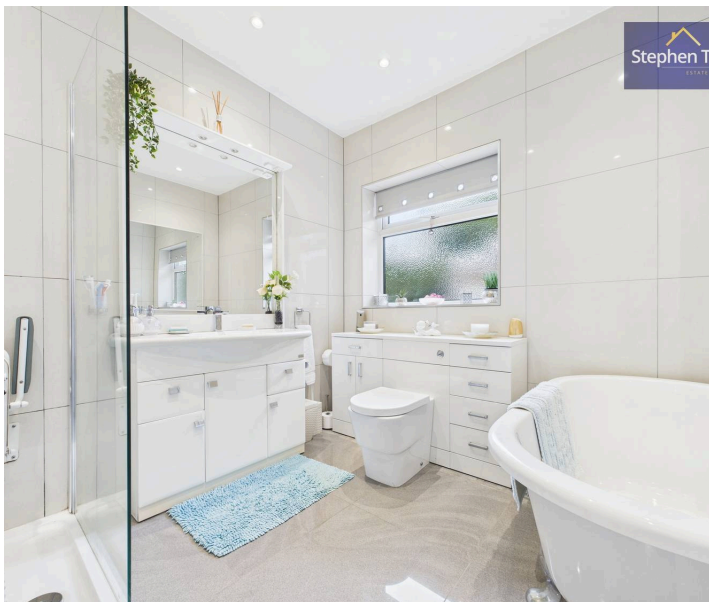
Dining Area
15' 8" x 13' 4" (4.77m x 4.06m)

Kitchen
14' 2" x 16' 10" (4.32m x 5.14m)

Bedroom 1
17' 5" x 16' 10" (5.30m x 5.12m)

Bedroom 2
11' 0" x 10' 6" (3.35m x 3.19m)

Bathroom
8' 2" x 7' 6" (2.48m x 2.29m)

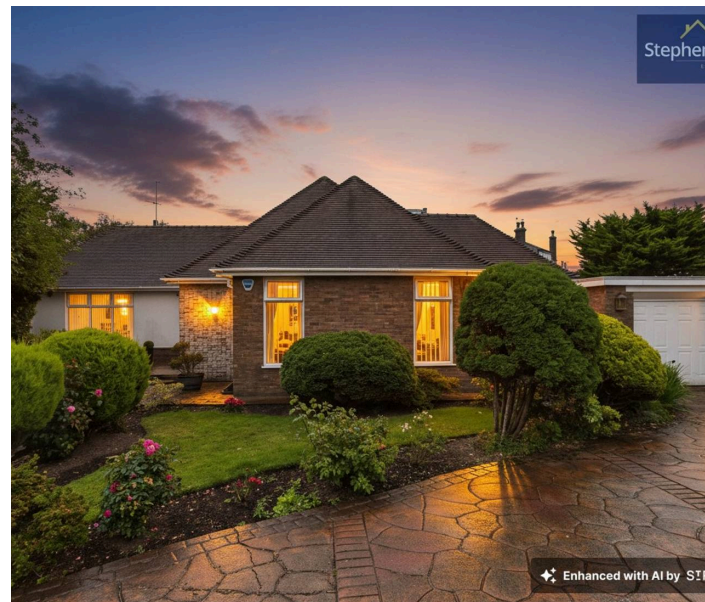


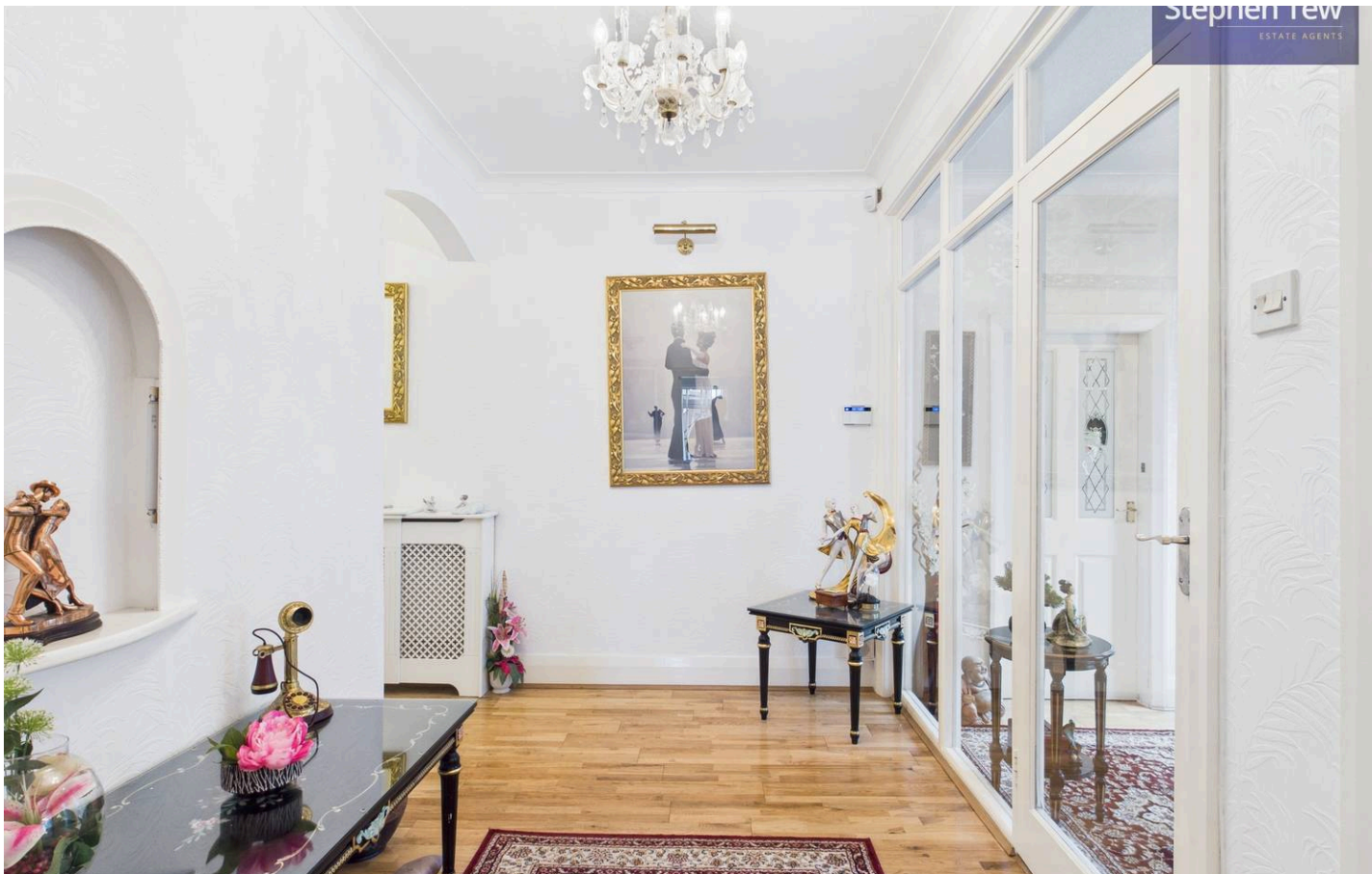
Landing
11' 9" x 12' 11" (3.57m x 3.94m)

Bedroom 3
11' 0" x 14' 1" (3.35m x 4.28m)

En-Suite
10' 4" x 10' 7" (3.16m x 3.23m)

Loft Room
17' 7" x 15' 4" (5.36m x 4.67m)





Vestibule

8' 5" x 4' 11" (2.56m x 1.50m)

Store

5' 0" x 6' 4" (1.52m x 1.93m)

Hallway

3' 6" x 16' 10" (1.06m x 5.13m)

Living Room

15' 8" x 19' 1" (4.78m x 5.82m)

Dining Area

15' 8" x 13' 4" (4.77m x 4.06m)

Kitchen

14' 2" x 16' 10" (4.32m x 5.14m)

Bedroom 1

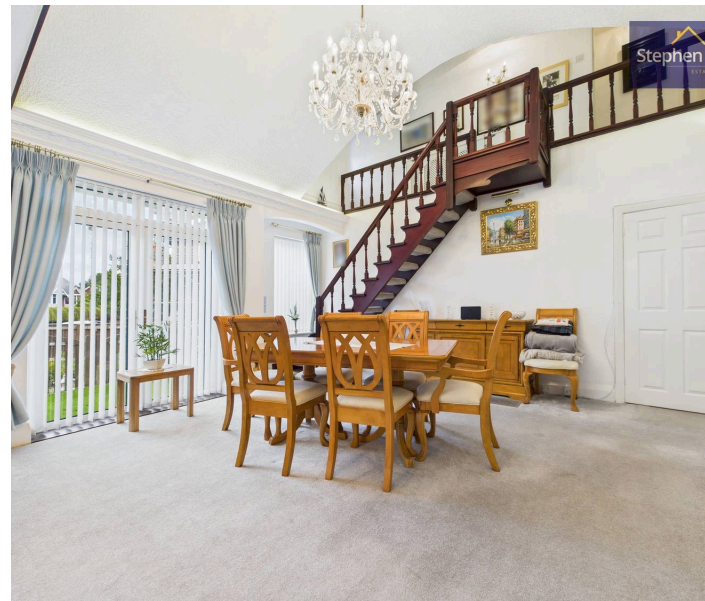
17' 5" x 16' 10" (5.30m x 5.12m)

Bedroom 2

11' 0" x 10' 6" (3.35m x 3.19m)

Bathroom

8' 2" x 7' 6" (2.48m x 2.29m)



Landing

11' 9" x 12' 11" (3.57m x 3.94m)

Bedroom 3

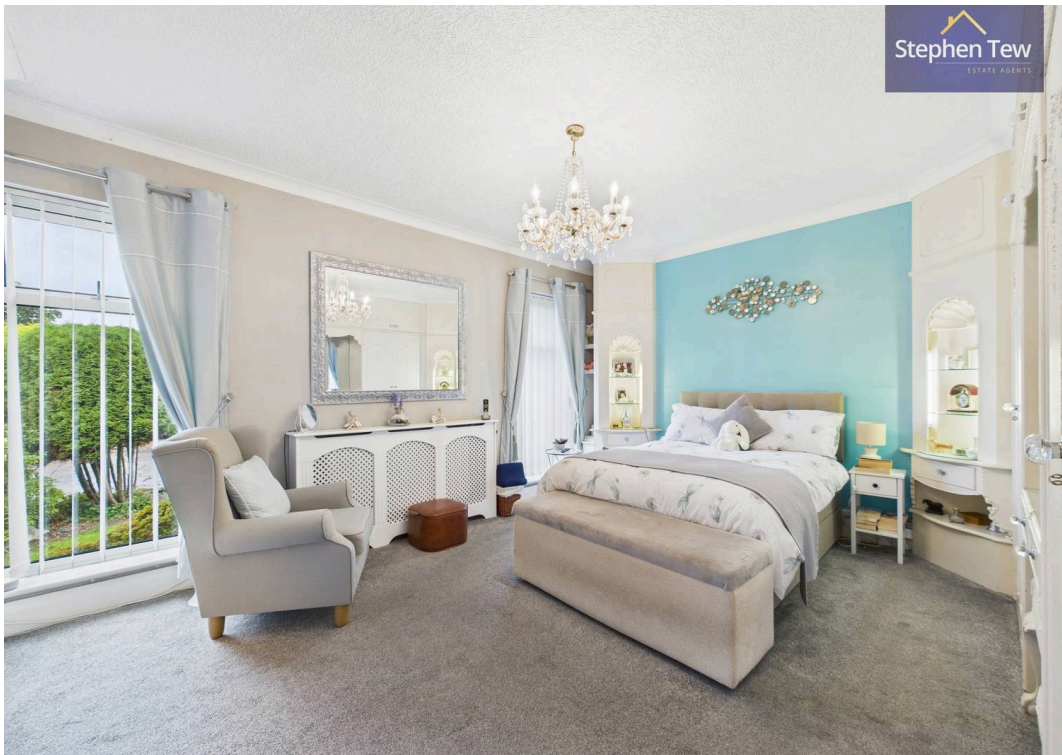
11' 0" x 14' 1" (3.35m x 4.28m)

En-Suite

10' 4" x 10' 7" (3.16m x 3.23m)

Loft Room

17' 7" x 15' 4" (5.36m x 4.67m)





FRONT GARDEN

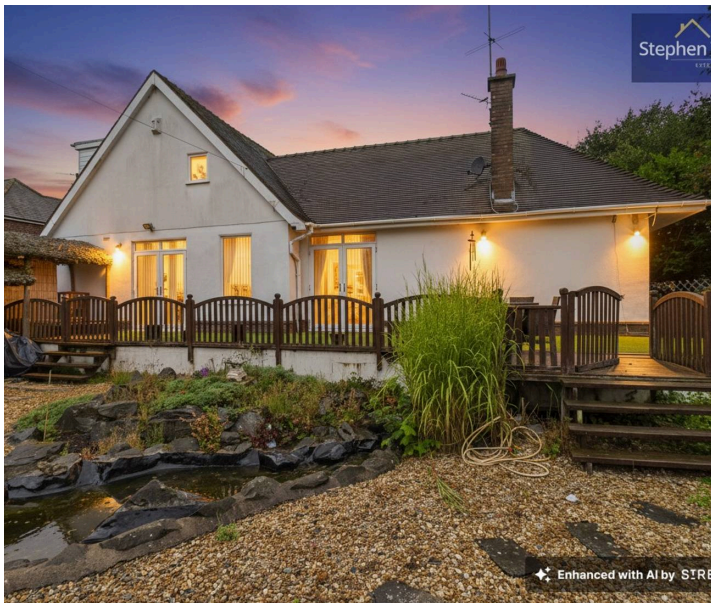
REAR GARDEN

DRIVEWAY

2 Parking Spaces

GARAGE

Single Garage







Stephen Tew Estate Agents

Stephen Tew Estate Agents, 132 Highfield Road - FY4 2HH

01253 401111

info@stephentew.co.uk

www.stephentew.co.uk

