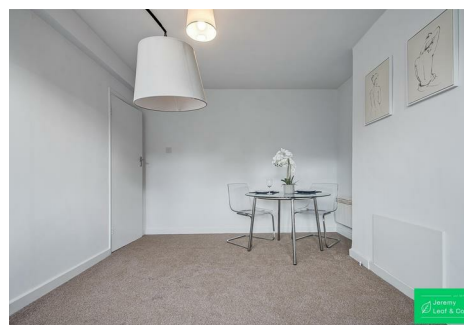
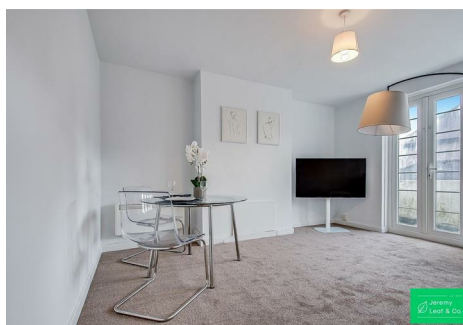


est 1979

 Jeremy
Leaf & Co.



Beech Lawns, Torrington Park, London

Offers In Excess Of £275,000

- Two Bedrooms
- Balcony
- Council Tax Band C
- Share of Freehold - 990y lease
- Reception Room
- Kitchen
- Unallocated Parking
- Service Charge £3,156.50 p.a.

863 High Road, London, N12 8PT
020 8446 4295

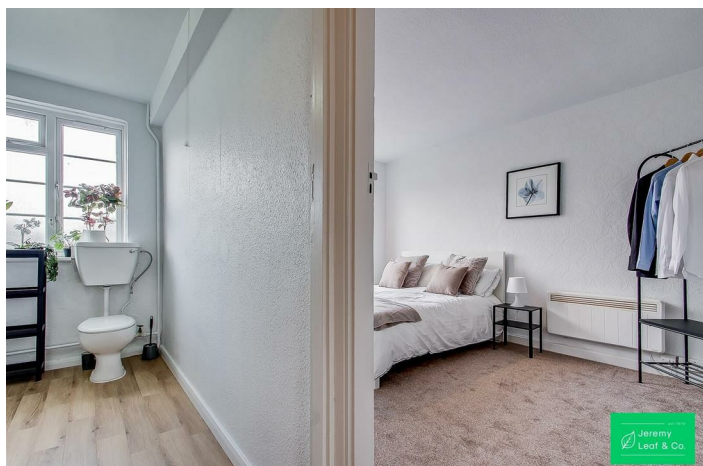
property@jeremyleaf.co.uk
<https://www.jeremyleaf.co.uk/>

Beech Lawns, Torrington Park, London, N12 9PP

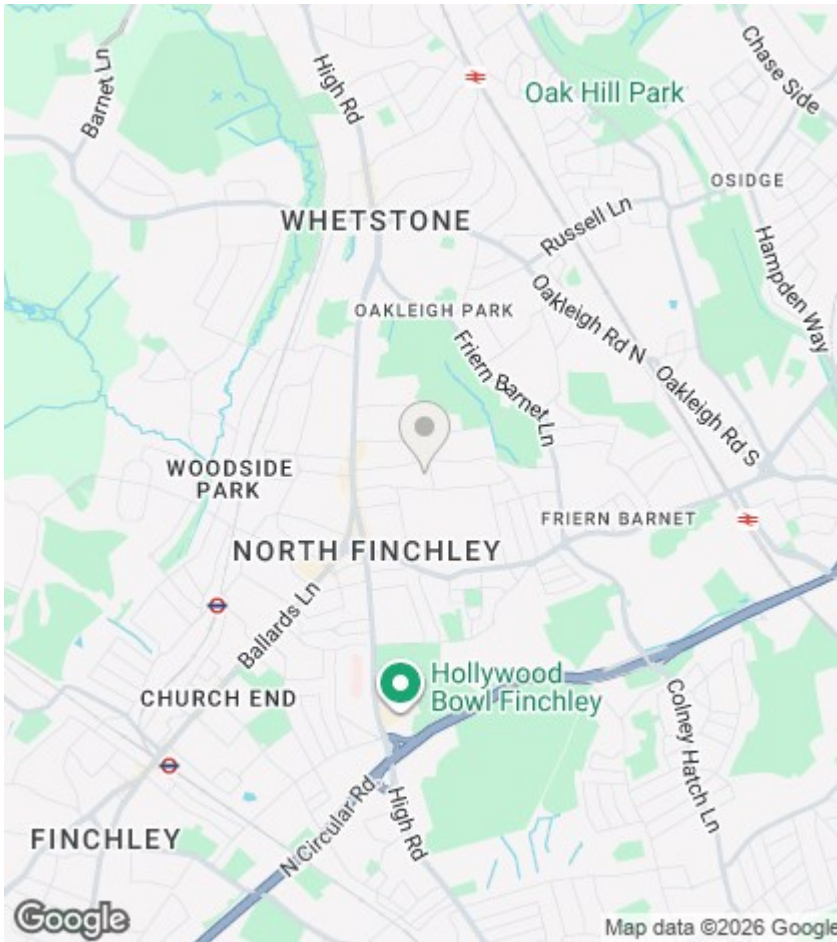
This recently refurbished two double bedroom flat in a landmark Art Deco development on Torrington Park benefits from a spacious reception room opening on to a balcony, separate kitchen and bathroom, and off-street parking. Located within 0.5m of North Finchley High Road's local amenities and transport links, the property is also 0.7 miles from Woodside Park tube (Northern Line Station). The block is currently undergoing maintenance and improvement works, with an estimated contribution of £5,000–£8,000 to the prospective buyer, the cost of which has already been factored into the asking price. Viewing recommended.



Council Tax Band: C







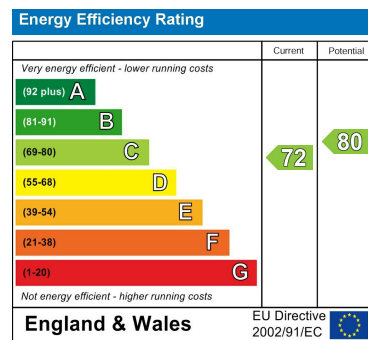
Directions

Viewings

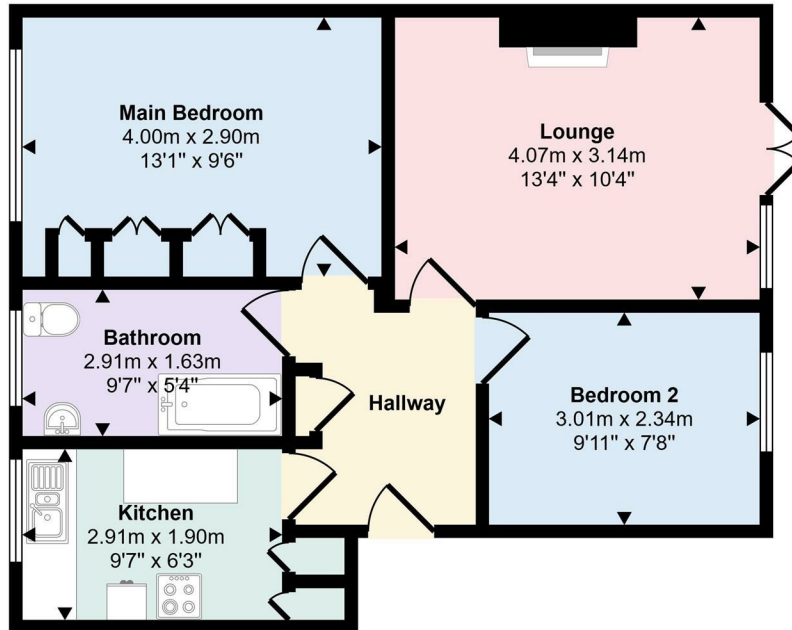
Viewings by arrangement only. Call 020 8446 4295 to make an appointment.

EPC Rating:

C



Approx Gross Internal Area
50 sq m / 541 sq ft



Floorplan

This floorplan is only for illustrative purposes and is not to scale. Measurements of rooms, doors, windows, and any items are approximate and no responsibility is taken for any error, omission or mis-statement. Icons of items such as bathroom suites are representations only and do not represent the actual items. Made with: Made with: Made with: 2025