



BREENS

Manor Court,

Cheshunt · EN8

OFFERS IN EXCESS OF

£270,000

LEASEHOLD



BREENS

THE HOME

Manor Court, Crossbrook

~~Chesham~~ EN8

KEY FEATURES

- Lease: 125 years from 25 March 2017 (Approx. 115 Years Remaining)
- Service Charge: £420 Per Annum Approx. (As Advised By Vendor)
- Ground Rent: £200 Per Annum Approx. (As Advised By Vendor)
- Offered To The Market Chain-Free
- Two Bedroom Ground Floor Apartment
- 15ft Living Reception Room With Direct Access To Communal Gardens
- Family Bathroom
- Double Glazed with Gas Central Heating
- Garage En-Bloc
- Ideally Positioned Within Walking Distance of Cheshunt and Theobalds Grove BR Stations

EPC RATING

C

COUNCIL TAX BAND

C

2

BEDROOMS

1

BATHROOMS

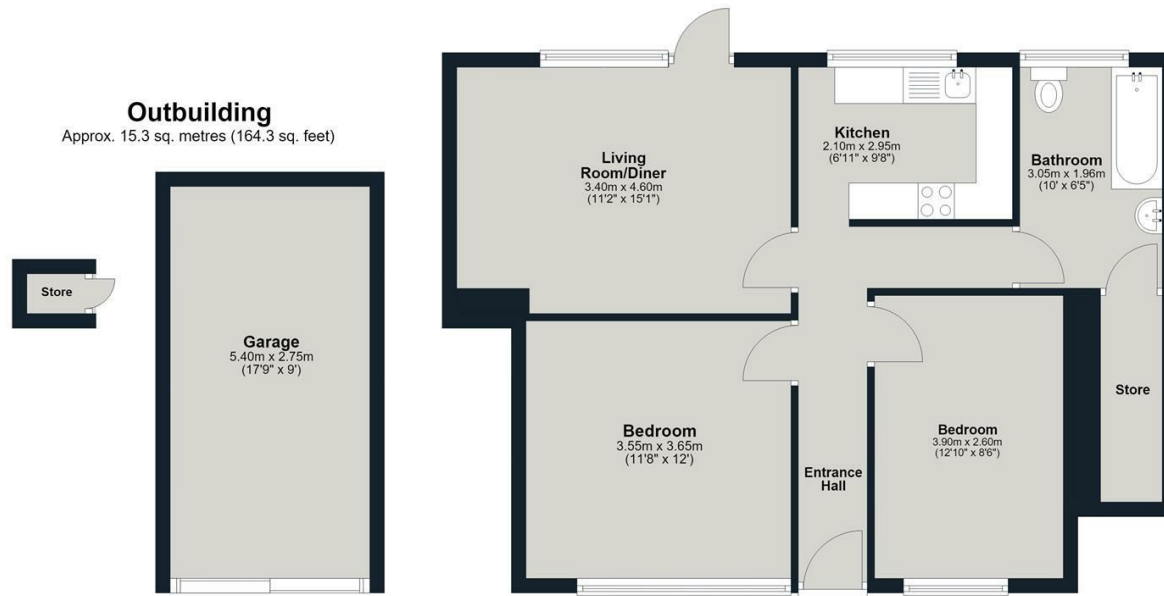
1

RECEPTIONS



BREENS

Ground Floor
Approx. 63.5 sq. metres (684.0 sq. feet)



Total area: approx. 78.8 sq. metres (848.3 sq. feet)

Manor Court

BREENS

GET IN TOUCH

020 8804 8989

enfield@breens.property

www.breens.property

VISIT US

557- 559 Hertford Road, Enfield, EN3 5UQ

These particulars are intended as a general guide and are believed to be correct, but their accuracy is not guaranteed and they do not form part of any offer or contract. All measurements are approximate and for guidance only. The Agent has not tested any apparatus, equipment, fixtures, fittings or services and cannot verify they are in working order or fit for purpose. Photographs are for illustration only and may depict items that are not for sale or included in the sale price. References to tenure are based on information supplied by the vendor; the Agent has not seen the title documents, and buyers should obtain verification from their solicitor or surveyor. Under the Money Laundering Regulations 2017, intending purchasers will be asked to produce identification and documentation at a later stage. These particulars are issued on the condition that all negotiations are conducted through Breens Estate Agents. Subject to contract and availability.