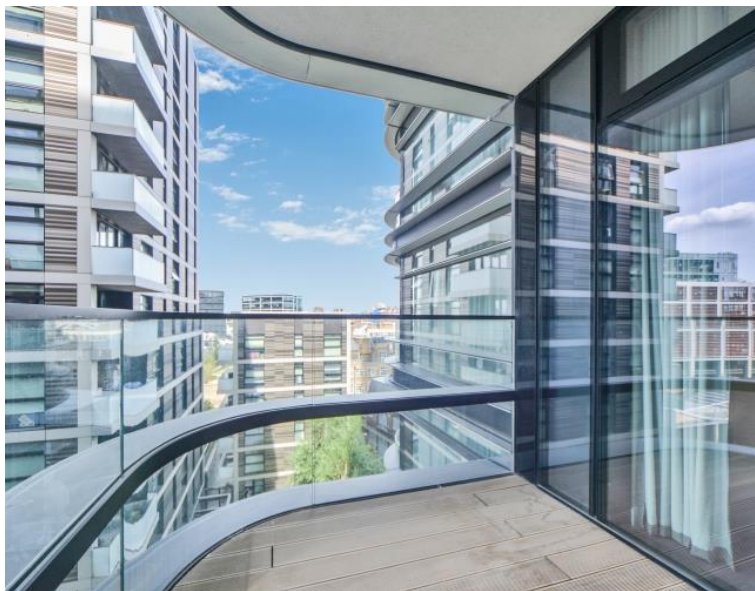


# Worship Street, London EC2A

Price £785 per week - Furnished







## Description

A truly stunning 1 bedroom apartment in the popular Principal Tower, situated in the City and Shoreditch corridor, EC2.

Situated from the 5th floor, this luxury 1 bedroom apartment is offered fully furnished. The apartment comprises a spacious open plan reception with fully fitted kitchen, large double bedroom with fitted wardrobes, luxury Porcelain bathroom with under floor heating, balcony, comfort cooling and heating and oak herringbone flooring.

Principal Tower boasts an idyllic location, a short walk to Liverpool Street Station (0.3 miles) as well as Shoreditch High Street Station (0.3 miles). The development benefits from excellent amenities which include a pool with Jacuzzi, spa, gymnasium, residents' lounge/bar, private cinema room and 24 hour concierge.

We understand that cooling / heating is delivered via a communal system for which separate charges apply.

Council tax band: E. Rent is payable on a monthly basis and you may be required to pay more than a month's rent in advance, depending on your circumstances. You will be required to pay a 1 week holding deposit following a successful offer. Tenancies with annual rents up to £50,000 will require a 5 weeks' security deposit, while those exceeding this threshold will require a 6 weeks' deposit. Utility bills, council tax, telephone line and broadband are not included in the rent. As well as paying the rent, you may also be required to make some additional permitted payments. If your tenancy does not qualify as an AST, additional fees may apply. Please visit [jll.co.uk/fees](http://jll.co.uk/fees) for details of fees that may be payable when renting a property. To check broadband and mobile phone coverage please visit Ofcom here [ofcom.org.uk/phones-telecoms-and-internet/advice-for-consumers/advice/ofcom-checker](http://ofcom.org.uk/phones-telecoms-and-internet/advice-for-consumers/advice/ofcom-checker)

- 1 Bedroom
- 1 Bathroom
- 5th floor
- Private balcony
- Furnished
- On-site leisure facilities including pool, spa and cinema
- 24 hour concierge
- 0.3 miles from Liverpool Street Station
- Approx 537 sq ft (49.9 sq m)
- Furnished

# Floorplan

537 sq ft | 50 sq m



City  
25 Walbrook The Walbrook  
Building,  
London EC4N 8AF  
+4420 7337 4000

*Urban living, your way.*

[jll.co.uk/residential](http://jll.co.uk/residential)

© 2019 Jones Lang LaSalle IP, Inc. All rights reserved. All information contained herein is from sources deemed reliable; however, no representation or warranty is made to the accuracy thereof.

