



Spencer.

**1 Weetwood Gardens, Knowle Lane, Sheffield,
S11 9SU**

Buy —

This superb two bedroom spacious ground floor apartment with private terrace and residents parking set in beautiful communal grounds in one of the most sought after and convenient locations in Sheffield!

— from *Spencer.*

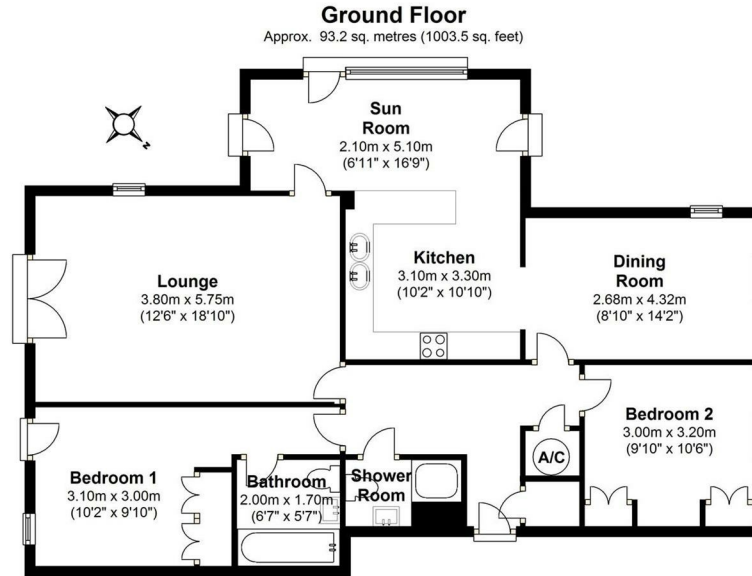
- Ground floor garden apartment
- Two double bedrooms
- Open plan Kitchen diner with South Westerly sunroom
- Separate lounge
- Family bathroom and separate shower room
- Residents parking
- Private garden terrace set in communal grounds
- Council Tax Band-D
- EPC Rating-C
- What3Words///stage.depend.cares



£330,000



Floorplan



Total area: approx. 93.2 sq. metres (1003.5 sq. feet)
For illustration purposes only - not to scale

Spencer.

+44 (0)114 268 3682
info@spencersestateagents.co.uk

469 Ecclesall Road, Sheffield, S11 8PP
SpencersEstateAgents.co.uk

SpencersAgents
SpencersAgents
SpencersEstateAgents

All enquiries and negotiations conducted via the Spencers office. We are obliged under the Estate Agent Act 1991 to qualify all offers and an independent mortgage consultant will speak to you to substantiate your details. The particulars are set out as a general outline only for guidance and do not constitute part of an offer or contract. Measurements are given in good faith and believed to be correct. Any prospective buyer should satisfy themselves as to the correctness of all statements and should not rely on them as representation of fact. No person in the employment of Spencers has any authority to make or give representation or warranty whatever in relation to this property.

Viewing: Via the Agents
Spencers Agents Ltd, 469 Ecclesall Road, Sheffield S11 8PP | Registered in England No. 7565948