



Huntspill Street, SW17
£950,000



Huntspill Street, SW17

An impressive and fully extended three double bedroom home on a desirable road positioned moments from Tooting and Earlsfield. With an immaculate interior, the property opens onto a double reception room with a stylish open-plan kitchen/reception and retains a generous garden and study room.

With a handsome and inviting exterior, the property opens onto a double reception room furnished with plantation shutters and a comfortable seating area. To the rear, there is a stylish fitted kitchen with wall and base units, solid worktops, a breakfast bar and a pantry/utility area with doors opening onto a landscaped garden. The ground floor is further balanced with a downstairs bathroom.

Over the first and top floors, there are three generous bedrooms with two bathroom with the principal bedroom furnished with ample storage and a study room.

Huntspill Street is a highly desirable residential road positioned equidistant to Earlsfield and Tooting town centres, with their vast amenities easily accessible. Tooting Broadway Underground station and the green open spaces are Garratt Green & Wandsworth Common are also nearby.

Features

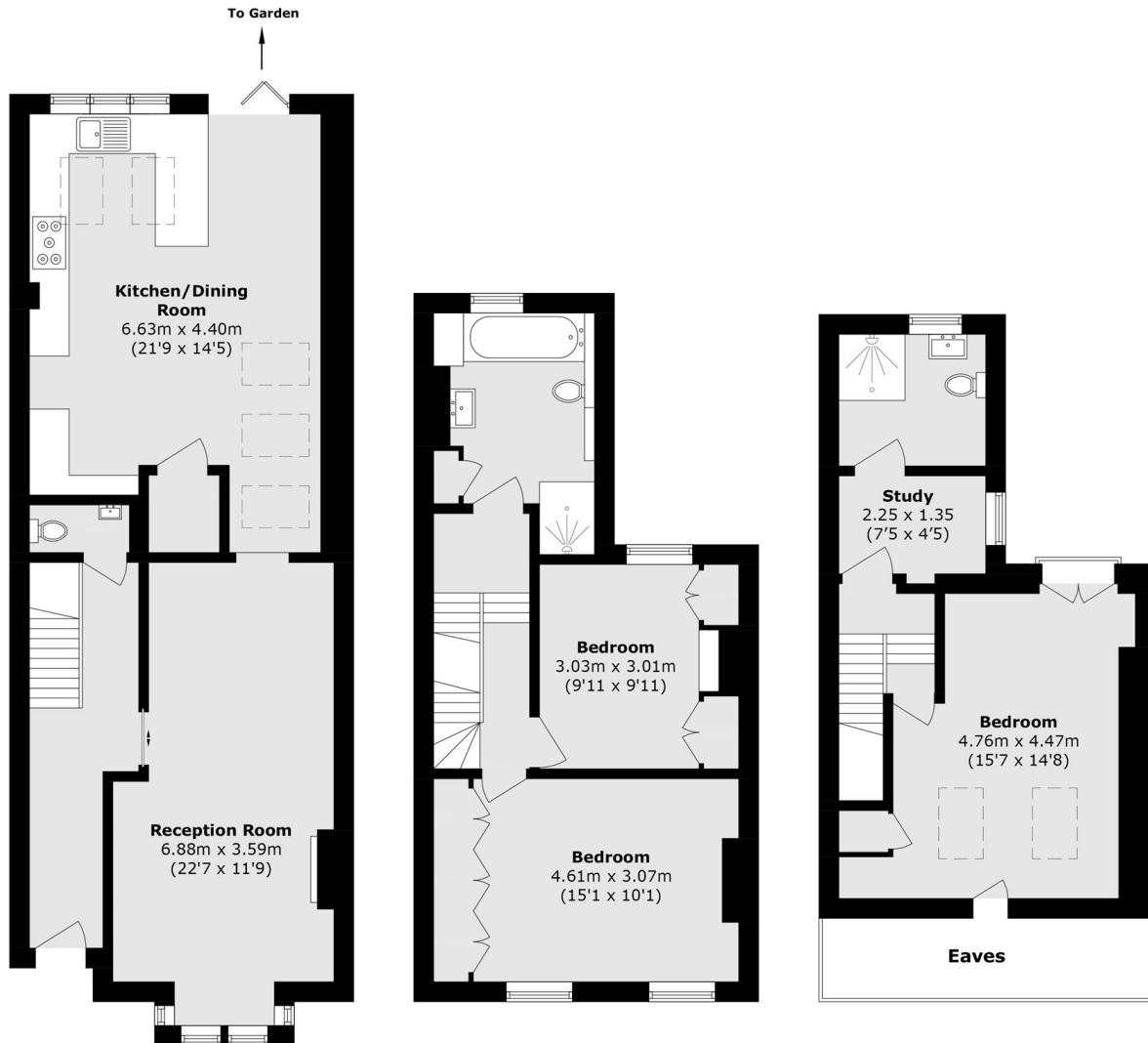
- Three Bedrooms
- Two Bathrooms
- Open-Plan Kitchen/Reception Room
- Double Reception Room
- Chain Free







Huntspill Street, London, SW17



Ground Floor

First Floor

Second Floor

Total area (approx.): 128.7 sq. m (1385.3 sq. ft)
(Excluding Eaves)