

Martlett Court, WC2B

£704 Per week

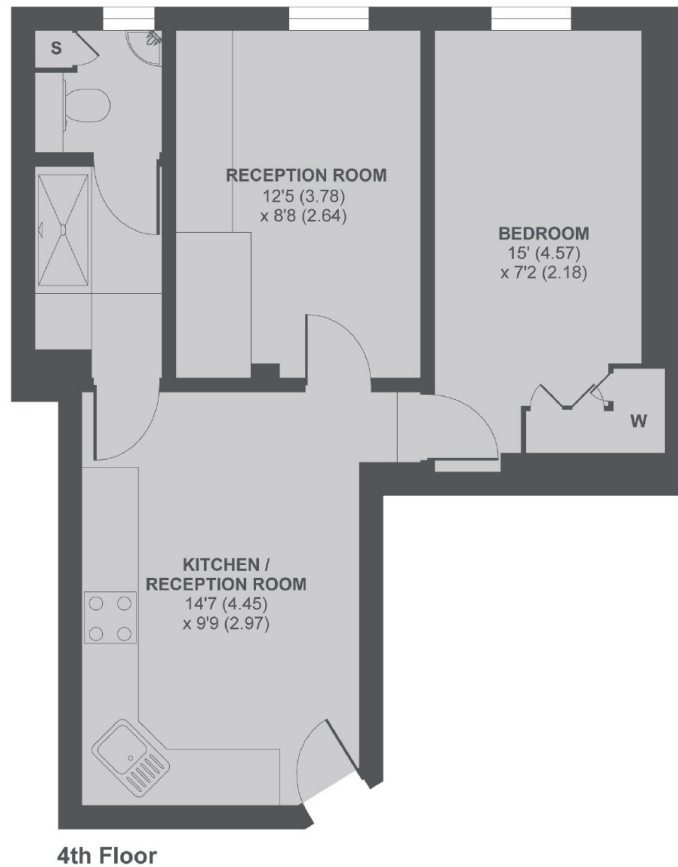
A light and well presented two double bedroom apartment on the top floor of this popular gated development with access to communal grounds in the heart of Covent Garden.

Ideally located close to all the shops, theatres and restaurants of the West End with The Royal Opera House and Covent Garden Piazza within 200 meters.

Features

- Open Plan Kitchen
- Top Floor
- Gated Entrance
- Landscaped Gardens
- Centrally Located
- Fully Tiled Bathroom

Martlett Court, London, WC2B



Martlett Court, WC2B

APPROX FLOOR AREA 443 SQ.FT 41.1 SQ.M

Copyright nichecom.co.uk 2018 REF : 301492

Dexters

Fitzrovia & Covent Garden
66 Goadge Street
London
W1T 4NG
Lettings
020 7067 2402

Energy Rating: E. We aim to make our particulars both accurate and reliable. However they are not guaranteed; nor do they form part of an offer or contract. If you require clarification on any points then please contact us, especially if you're traveling some distance to view. Please note that appliances and heating systems have not been tested and therefore no warranties can be given as to their good working order.

 **RICS** | Regulated
Estate Agent
and Letting Agent

dexters.co.uk