



Evelyn Road, TW9

£1,195,000

Offering approximately 1,255 sq ft of well-appointed living space, this generous three-bedroom Victorian cottage has been finished to an exceptional standard and is ready for immediate occupation. Ideally suited to those who wish to enjoy the abundant green spaces of Kew and Richmond, the property combines contemporary design with a calm, welcoming atmosphere. Offered to the market with no onward chain.

Evelyn Road is ideally located in the heart of Richmond, just moments from Old Deer Park, the Royal Botanic Gardens, and the scenic Richmond Riverside. With Richmond town centre nearby, residents can also enjoy a wide range of shops, bars, and restaurants, making it a

Features

- Three Bedroom
- Modern Finish
- Garden
- Two Bath
- No Onward Chain
- Central Location



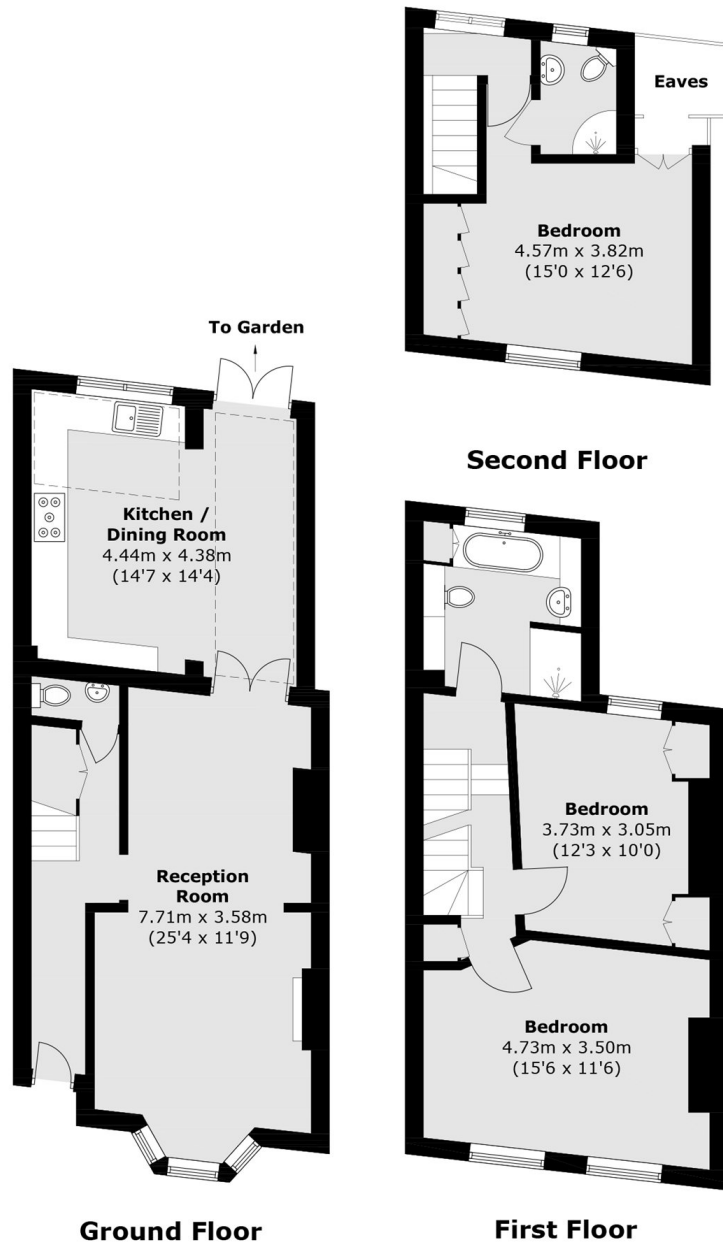
Evelyn Road, TW9

The ground floor is accessed via a smart porch, opening into an inviting entrance hallway that leads through to a beautifully updated open-plan living and dining area. This space has been thoughtfully designed to maximise both natural light and a sense of openness. A separate modern kitchen and a convenient downstairs WC complete the ground floor. French doors open onto a charming patio garden, creating a seamless indoor-outdoor flow.

On the first floor, a bright landing leads to two well-proportioned double bedrooms, along with a spacious and stylish family bathroom. Stairs continue to the second floor, where a further double bedroom offers peaceful and versatile accommodation.



Evelyn Road, Richmond, TW9



Total area (approx.): 116.6 sq. m (1,255.0 sq. ft)
(Excluding Eaves)