

25 Bridge Lane, Bramhall

£635,000 Freehold

FABULOUS SEMI-DETACHED WITH IDYLIC GARDENS • FOUR DOUBLE BEDROOMS, TWO BATHROOMS • OPEN-PLAN DINING KITCHEN • GARDENS TO TWO SIDES • WELL-PRESENTED THROUGHOUT • LOCATED CLOSE TO THE HAPPY VALLEY AND BRAMHALL PARK



A fabulous semi-detached home sitting a short stroll into The Happy Valley and Bramhall Park. Well-presented throughout this spacious family home boasts thoughtfully extended accommodation with four large double bedrooms, two bathrooms, a fantastic open-plan kitchen, sitting room and living room. All enclosed by fabulous gardens that wrap around two sides of the property and lead to an idyllic stream.

Council Tax band: D

Tenure: Freehold

EPC Energy Efficiency Rating: D

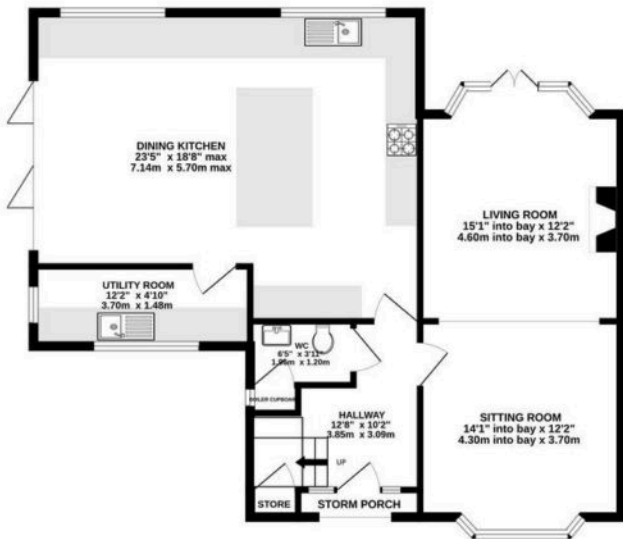
EPC Environmental Impact Rating: E



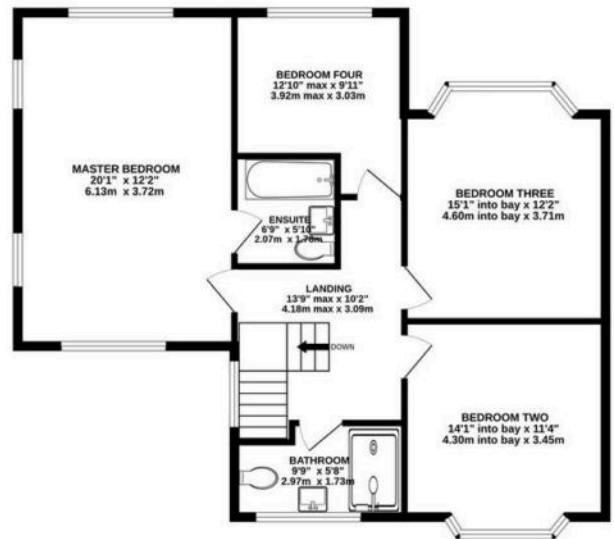
- FABULOUS SEMI-DETACHED WITH IDYLIC GARDENS
- FOUR DOUBLE BEDROOMS, TWO BATHROOMS
- OPEN-PLAN DINING KITCHEN
- GARDENS TO TWO SIDES
- WELL-PRESENTED THROUGHOUT
- LOCATED CLOSE TO THE HAPPY VALLEY AND BRAMHALL PARK



GROUND FLOOR
888 sq.ft. (82.5 sq.m.) approx.



1ST FLOOR
894 sq.ft. (83.1 sq.m.) approx.



TOTAL FLOOR AREA : 1782 sq.ft. (165.5 sq.m.) approx.

Whilst every attempt has been made to ensure the accuracy of the floorplan contained here, measurements of doors, windows, rooms and any other items are approximate and no responsibility is taken for any error, omission or mis-statement. This plan is for illustrative purposes only and should be used as such by any prospective purchaser. The services, systems and appliances shown have not been tested and no guarantee as to their operability or efficiency can be given.
Made with Metropix ©2025

Sat back from the road behind a substantial gated driveway this home offers super off-road parking for up to four cars. Mature trees provide a charming and private plot and a covered porch leads into a welcoming entrance hall with turning staircase. At the foot of the hallway sits the open-plan dining kitchen with a large central island providing a lovely focal point. Two windows overlook the rear garden whilst bi-folding doors open seamlessly on to the generous decking to the side garden providing elevated views over the mature gardens and the charming brook beyond. A utility room sits off the kitchen and offers super storage and worktop space. Back into the hallway and to its left sits a lovely sitting room with bay window that opens into a living room with stone fireplace and patio doors leading out to the rear garden. A WC provides access to the boiler cupboard whilst a storage cupboard sits on the half-landing. To the first floor the four bedrooms are all generous doubles, with bedroom two and three offering bay windows. The master bedroom is a really special space with four windows offering a triple aspect over the gardens- you are really sleeping in the tree tops when you go to bed in this room. A further element of luxury is offered from the en-suite comprising bath with shower over, WC and wash hand basin. The bathroom is the final room sitting off the large landing and comprises walk-in shower, WC and wash hand basin.

Externally the gardens are extensive and beautiful. Mature trees allow super privacy and a lovely green aspect. To the side the elevated deck overlooks an astro-turf lawn that leads down to the stream which sits behind a charming picket fence. The rear section of the garden is mainly lawned with two patios providing space to sit and relax and a barked children's play area. Access can be found round to the front of the house where the driveway provides super parking and is enclosed by mature hedging.



