



Combe Avenue, SE3

£675,000

Set within the highly sought-after Vanbrugh Park Estate, this beautifully presented three-bedroom terraced home. Tastefully decorated throughout, the property offers bright and stylish accommodation, featuring a contemporary fitted kitchen with integrated appliances and a modern family bathroom. On the first floor, there are three generously sized bedrooms along with a modern family bathroom. To the rear is a beautifully maintained south-facing garden, providing a wonderful outdoor space with rear access, ideal for relaxing or entertaining.

Situated on the edge of Greenwich Park and the open heath and within half a mile of both Westcombe Park and Maze Hill Stations. This quiet, popular development is also

Features

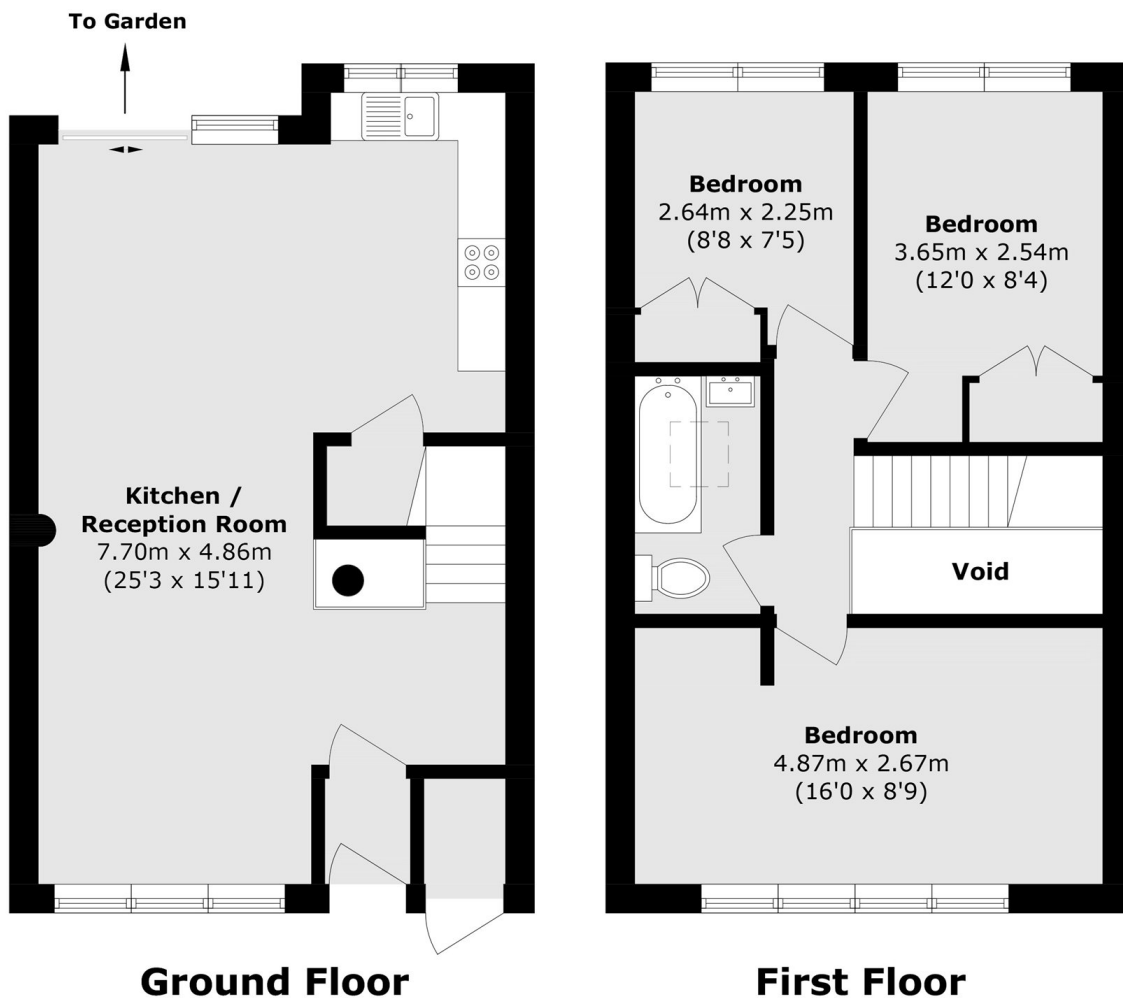
- Three Bedroom Terraced House
- Minutes From Greenwich Park
- South Facing Garden
- Good Condition Throughout
- Sought After Location
- No Chain



Combe Avenue, SE3



Combe Avenue, Blackheath, SE3



Total area (approx.): 75.4 sq. m (811.6 sq. ft)
(Excluding Void)
External storage area (approx.): 0.9 sq. m (9.6 sq. ft)