



Phillimore Place

Kensington, W8

£13,992.33 per month
(£3,229 per week)

An immaculate interior designed three bedroom apartment Arranged over the ground & lower ground floor of this beautiful and period building.

CHESTERTONS



Phillimore Place

Kensington, W8

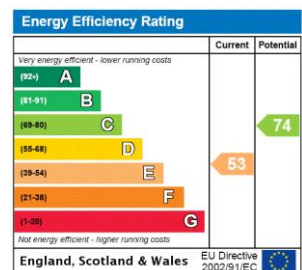
- Spacious & airy apartment
- Two double bedrooms
- Located moments from amenities of Kensington High Street
- Amazing views of the roof tops of Kensington
- Private Garden



An immaculate interior designed three bedroom apartment Arranged over the ground & lower ground floor of this beautiful and period building. The apartment is offered on an unfurnished basis. Property comprises three double bedrooms, three bathrooms, bright double reception room. Separate kitchen and private garden.

Phillimore Place is ideally located moments from the many excellent amenities found on High Street Kensington as well as being within close walking distance of Kensington, Notting Hill and Holland Park.

Minimum Term: 12 months
Deposit Required: £16,145.00
Local Authority: Royal Borough of Kensington & Chelsea
Council Tax Band: H
EPC Rating: E
Unfurnished



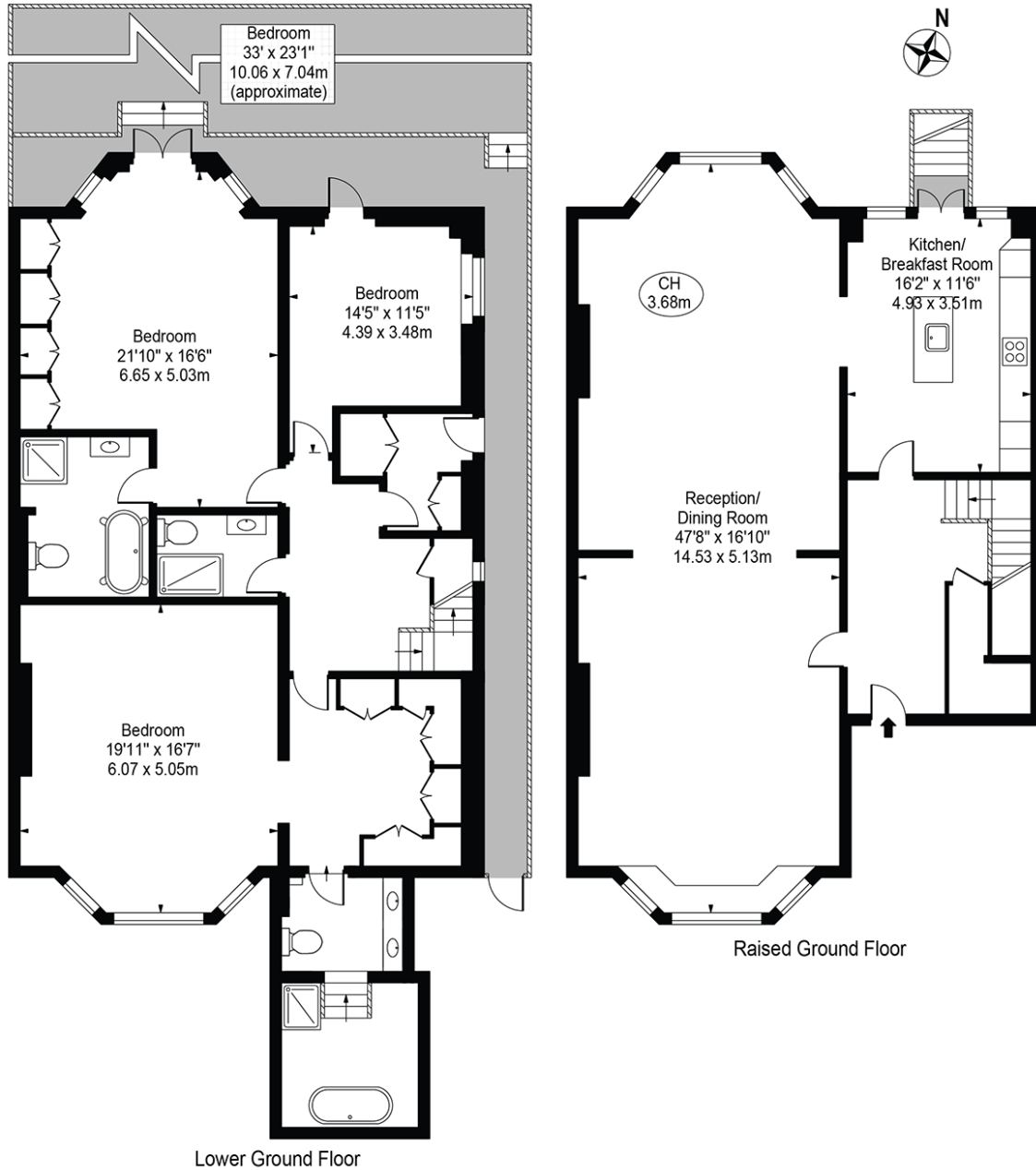
Chestertons Kensington Lettings

116 Kensington High Street
 Kensington
 London
 W8 7RW
 kensingtonlettingsusers@chestertons.co.uk
 02079377260
 chestertons.co.uk

Additional tenant charges apply (fees apply to non-AST tenancies only)
 Tenancy Agreement Fee: £300
 References per Tenant/Guarantor: £60
 Inventory check (approx. £100 – £250 inc. VAT)
chestertons.co.uk/property-to-rent/applicable-fees

Phillimore Place

Approx. Gross Internal Area 2529 Sq Ft - 234.95 Sq M



For Illustration Purposes Only - Not To Scale

This floor plan should be used as a general outline for guidance only and does not constitute in whole or in part an offer or contract. Any intending purchaser or lessee should satisfy themselves by inspection, searches, enquiries and full survey as to the correctness of each statement. Any areas, measurements or distances quoted are approximate and should not be used to value a property or be the basis of any sale or let.