



## 28 ALTON GARDENS TWICKENHAM, TW2 7PD

£650,000  
FREEHOLD

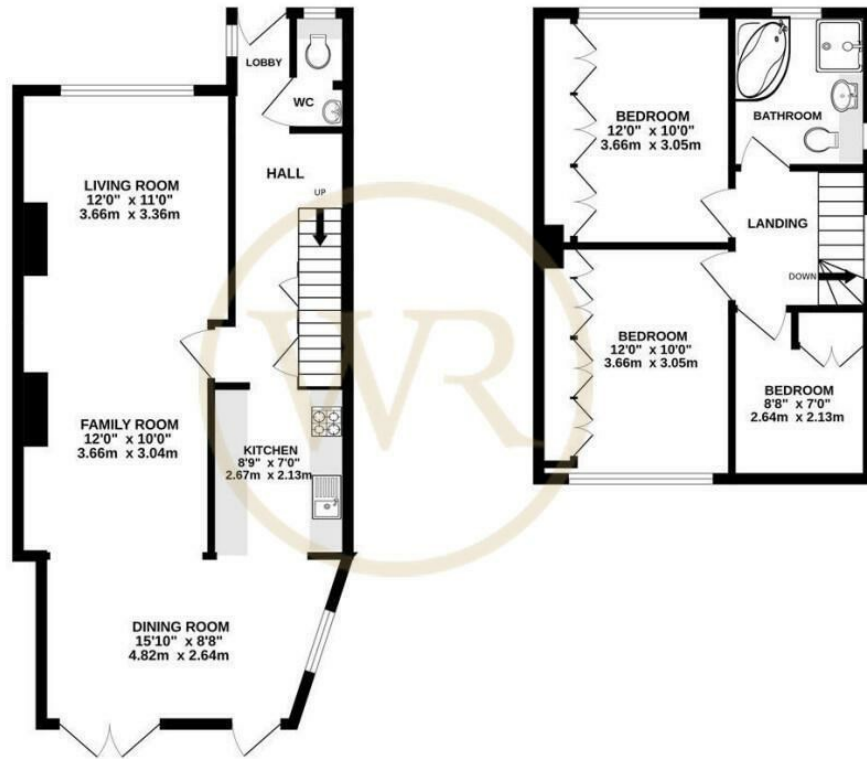
Offered to the market is this well presented three-bedroom semi-detached home on Alton Gardens. With generous living space, a downstairs WC, garage and an extended dining area leading on to the pretty rear garden.

The ground floor includes a double-length reception room, providing flexible living and family space. To the rear, the kitchen connects with the dining area, creating a practical semi-open plan arrangement,

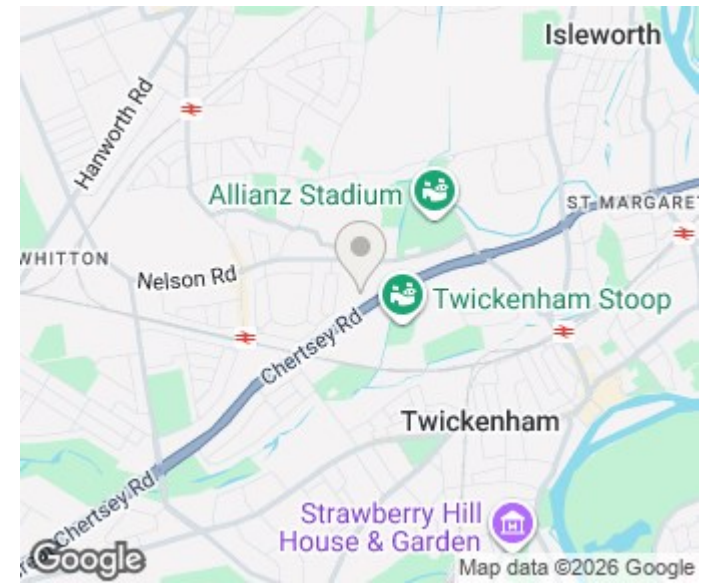
Upstairs, there are three bedrooms, each with fitted cupboards, along with a family bathroom fitted with a four-piece suite including a separate shower cubicle.

WR

WYNDHAM ROW



TOTAL FLOOR AREA : 952 sq.ft. (88.5 sq.m.) approx.  
 Whilst every attempt has been made to ensure the accuracy of the floorplan contained here, measurements of doors, windows, rooms and any other items are approximate and no responsibility is taken for any error, omission or mis-statement. This plan is for illustrative purposes only and should be used as such by any prospective purchaser. The services, systems and appliances shown have not been tested and no guarantee as to their operability or efficiency can be given.  
 Made with Metropix ©2025



Energy Efficiency Rating		Current	Potential
Very energy efficient - lower running costs			
(92 plus) A			
(81-91) B			
(69-80) C			
(55-68) D		61	
(39-54) E			
(21-38) F			
(1-20) G			
Not energy efficient - higher running costs			
England & Wales		EU Directive 2002/91/EC	

Agents Note: Whilst every care has been taken to prepare these particulars, they are for guidance purposes only. All measurements are approximate and are for general guidance purposes only and whilst every care has been taken to ensure their accuracy, they should not be relied upon and potential buyers/tenants are advised to recheck the measurements

Wyndham Row Ltd  
 Upper Deck, Admirals Quarters  
 Portsmouth Road  
 Thames Ditton  
 Surrey  
 KT7 0XA

01932 508 000  
 office@wyndhamrow.co.uk  
 www.wyndhamrow.co.uk

**WR**  
 WYNDHAM ROW