



Duchess of Bedfords Walk
Kensington, W8

CHESTERTONS





An elegant First-Floor Three-Bedroom apartment set in a sought after portered block moment from Holland Park.

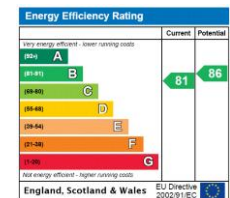
This exceptional three-bedroom apartment, situated on the first floor of a well-maintained purpose-built block, offers a harmonious blend of contemporary sophistication and comfort. Bathed in natural light, the residence provides a tranquil and refined living environment.

The building benefits from a lift and the services of a dedicated porter/caretaker, ensuring both convenience and security for residents. Designed with both functionality and aesthetic appeal in mind, the apartment offers a well-appointed layout that enhances the overall living experience.

Ideally located in close proximity to the picturesque Holland Park, residents can enjoy its beautiful green spaces and serene atmosphere. The property also benefits from excellent transport links, with nearby underground stations and bus routes providing easy access to the rest of London.

- Three bedrooms
- Separate kitchen
- Allocated off street parking
- Lift
- porter
- excellent natural light

Offers in excess of
£2,000,000



Tenure: Leasehold 128 years remaining
Service Charge: £15,310 per annum
Ground Rent: £0
Local Authority: Kensington and Chelsea
Council Tax Band: H

Chestertons Kensington Sales

116 Kensington High Street
 London
 W8 7RW

kensington@chestertons.co.uk

020 7937 7244

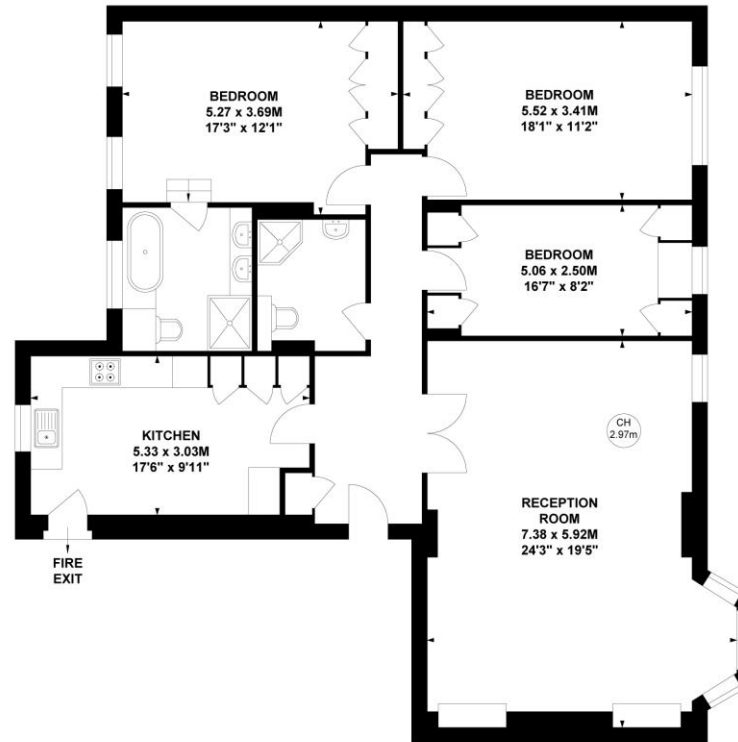
chestertons.co.uk

Duchess of Bedford House, W8

Approximate gross internal area

130.44 sq m / 1404 sq ft

Key :
CH - Ceiling Height



First Floor

Not to scale, for guidance only and must not be relied upon as a statement of fact.
All measurements and areas are approximate only

Chesterton UK Services Limited trading as Chestertons for themselves and for the vendor of this property whose agents they are, give notice that (i) these particulars do not constitute any part of an offer or contract, (ii) all statements contained within these particulars are made without responsibility on the part of Chestertons or the vendor, (iii) whilst made in good faith, none of the statements contained within these particulars are to be relied upon as a statement or representation of fact, (iv) any intending purchasers must satisfy themselves by inspection or otherwise as to the correctness of each of the statements contained within these particulars, (v) the vendor does not make or give either Chestertons or any person in their employment any authority to make or give representation or warranty whatsoever in relation to this property. Wide angle lenses may be used. ©Copyright Chestertons | Chesterton UK Services Limited | Registered Office 5th Floor, The Lantern, 75 Hampstead Road, London, NW1 2PL Registered Company Number 05334580.



This paper is
100% recyclable