



## Friars Stile Road, TW10

£650,000

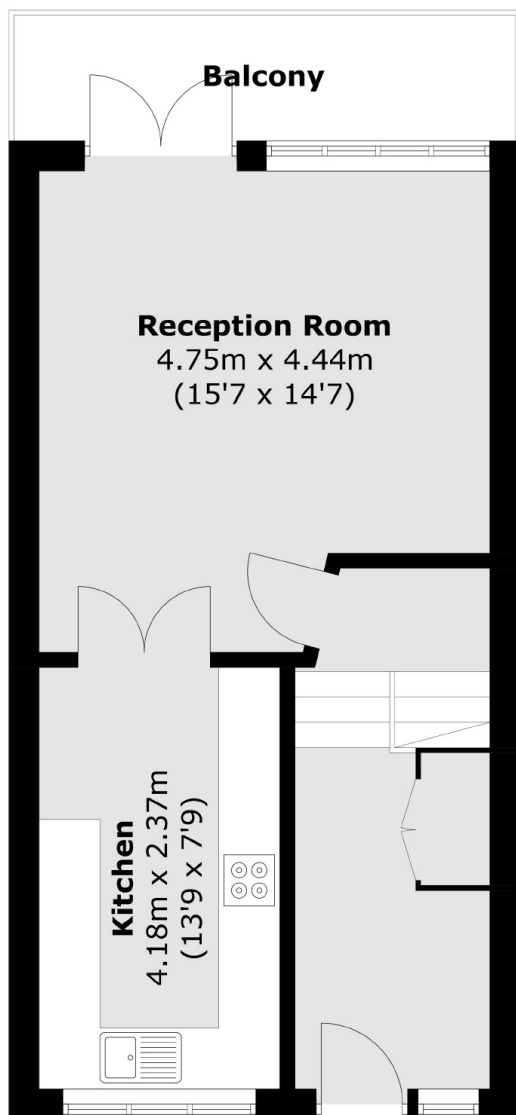
An opportunity to purchase this split level apartment on Richmond Hill. The property is entered via an external staircase on Onslow Road. The first floor accommodation comprises a hallway with storage cupboard, a large reception room with doors leading out to the private full width balcony over looking Friars Stile Road, and a modern fitted kitchen. The second floor consists of two a large master double bedroom, a second smaller double bedroom, and a modern bathroom. This long leasehold interest of 174 years remaining is being offered to the market with no onward chain.

Friars Stile Road is well located for the amenities on Richmond Hill, with Richmond Park, Richmond Hill Terrace Gardens, Richmond Riverside and Richmond town centre all being close by. Richmond train station offers access to and from London by tube or rail via the District line, South Western trains and the London Overground service.

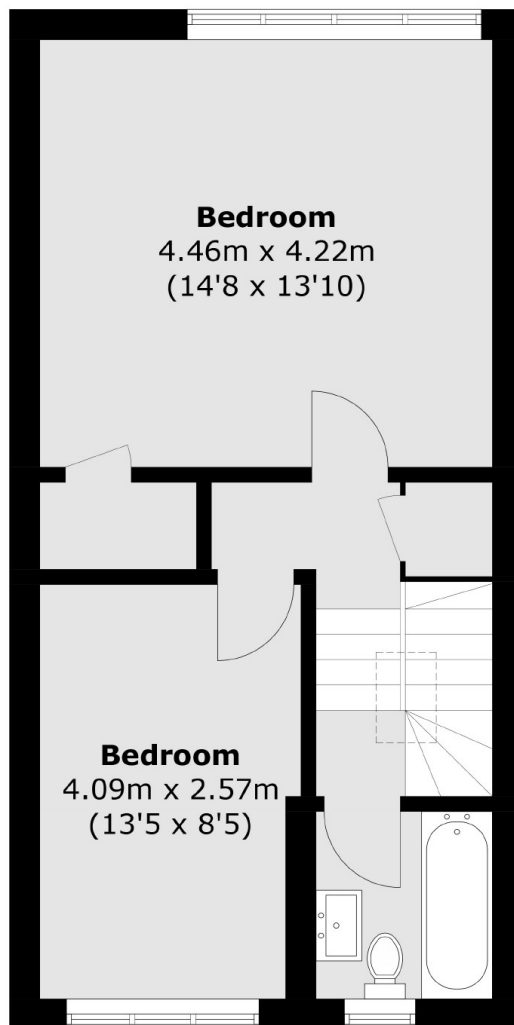
### Features

Two Double Bedroom  
Split Level Apartment  
Richmond Hill  
Large Reception Room  
Modern Kitchen  
Balcony

# Friars Stile Road, Richmond, TW10



**Ground Floor**



**First Floor**

Total area (approx.): 82.8 sq. m (891.2 sq. ft)  
Balcony : 6.1 sq. m (65.7 sq. ft)