



Guide Price
£300,000

Leasehold

2x  2x  1x 

**Laurel House, Great
Heathmead, Haywards
Heath, West Sussex,
RH16**

OVER 60?

Secure this property
for up to **59% less!**

cubitt&west
Helping you move forwards



Main features

- **Spacious top-floor apartment with abundant natural light**
- **Double garage with electric door, plus additional visitors' parking**
- **Located in a secure, gated development**
- **Conveniently situated within walking distance to the train station and town centre**
- **Two generous double bedrooms, both with built-in wardrobes**
- **Stylish en-suite bathroom**
- **Recently refurbished shower room**
- **Private balcony**

Accommodation

SECOND FLOOR

Entrance Hallway

Lounge/Dining Area: 23'7 x 13'5 (7.19m x 4.09m)

Kitchen: 15'3 x 9'3 (4.65m x 2.82m)

Bedroom 1: 11'11 x 11'2 up to fitted wardrobes (3.63m x 3.41m)

En-Suite Bathroom

Bedroom 2: 11'8 x 8'10 up to fitted wardrobes (3.56m x 2.69m)

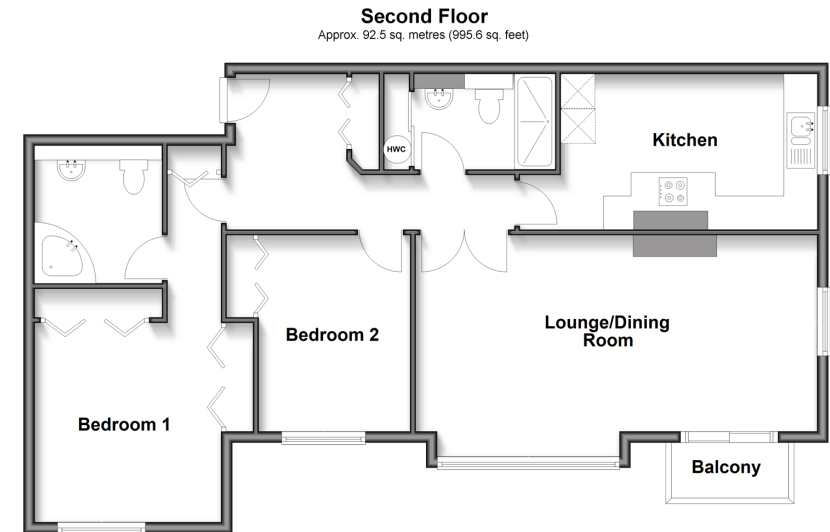
Shower Room

OUTSIDE

Balcony

Double Garage: 16'4 x 15'11 (4.98m x 4.85m)

Communal Gardens



Call Haywards Heath - 01444 411132 ■ cubittandwest.co.uk

■ Legal advice should be taken to verify fixtures/fittings, planning, alterations and/or lease details
 ■ Through a Homewise Home For Life Plan people aged 60+ can secure this property for up to 50% less, by purchasing a Lifetime Lease.

■ Appliances & services are untested, dimensions are approximate and floor plans are not to scale