



**POOLE
TOWNSEND**

Priority Crescent, Grange-over-sands, LA11 7BL

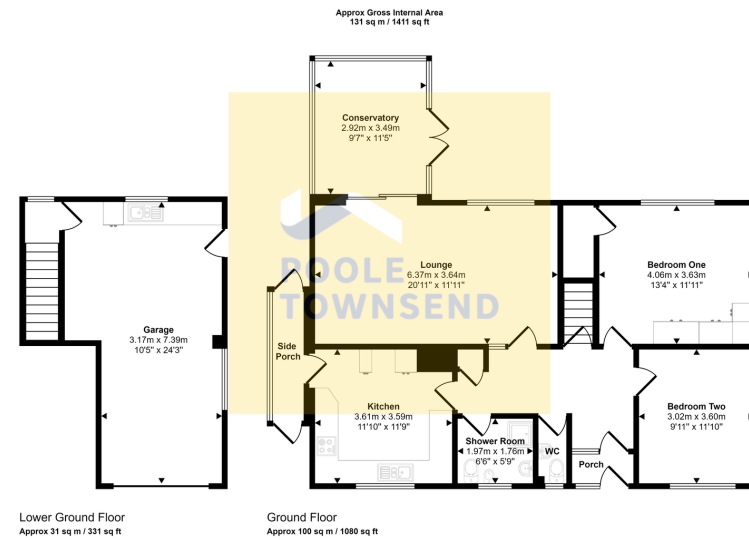
£325,000

🛏️ 2 🚿 1 🚗 2



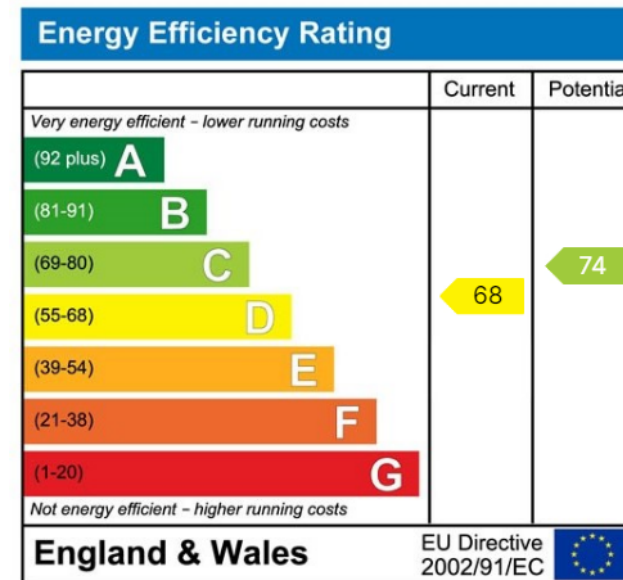
- Positioned on a prime plot in a highly sought-after residential area.
- Spectacular landscaped gardens offering peaceful surroundings.
- Integral garage for additional storage.
- Conservatory providing extra living space and natural light.
- Two double bedrooms for ample space.
- Bright and airy accommodation throughout.
- Driveway parking for convenience.
- Spacious lounge/diner with views of Morecambe Bay.
- Breakfast kitchen ideal for casual dining.
- Freehold Council Tax band D





This floorplan is only for illustrative purposes and is not to scale. Measurements of rooms, doors, windows, and any items are approximate and no responsibility is taken for any error, omission or mis-statement. Icons of items such as bathroom suites are representations only and may not look like the real items. Made with Made2Happy 360.

Positioned on an impressive plot in a sought after residential area, this property boasts wonderfully bright and airy accommodation, along with spectacular landscaped gardens, driveway parking and an integral garage. Briefly comprising of a spacious lounge/diner with views to Morecambe bay, a conservatory, a breakfast kitchen, two double bedrooms, a modern shower room and separate WC. Outside, there are landscaped, low maintenance gardens with colourful planted borders with space to sit and enjoy the peaceful surroundings. The property also benefits from having solar panels fitted.



Visit us at
www.pooletownsend.co.uk
enquiries@pooletownsend.co.uk

We are open
 Monday – Friday 9.00 – 5.00
 Saturday 9.00 – 1.00

Barrow 01229 811811
 Ulverston 01229 588111
 Grange 015395 33316
 Kendal 01539 734455
 Milnthorpe 015395 62044