



Courtfield Gardens
Earls Court, SW5

CHESTERTONS





The apartment features a spacious open-plan kitchen and reception room with breakfast bar and integrated modern appliances, two generous double bedrooms with built-in wardrobes, a contemporary bathroom, a separate WC and a large private patio garden.

- 2 bedrooms 1 bathroom
- Private garden
- Access to communal garden square
- Offered furnished
- Approx 750 square feet

£3,500 pcm

Additional tenant charges apply (fees apply to non-AST tenancies only)

Tenancy Agreement Fee: £300

References per Tenant/Guarantor: £60

Inventory check (approx. £100 – £250 inc. VAT)

chestertons.co.uk/property-to-rent/applicable-fees

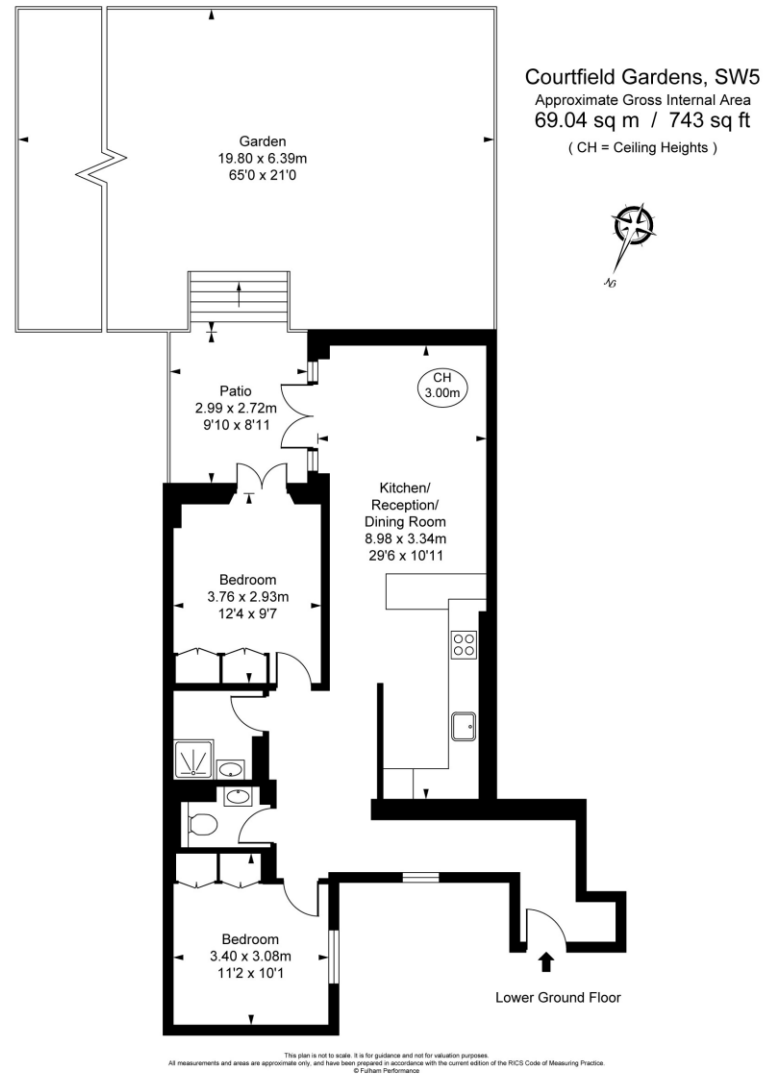
Energy Efficiency Rating		Current	Potential
100-120	A		
81-100	B		
61-80	C		
41-60	D		
21-40	E		
1-20	F		
1-20	G		
Not energy efficient - higher running costs			
EU Directive 2002/91/EC			
England, Scotland & Wales			

Minimum Term: 12 months
Deposit Required: £4,038.46
Local Authority: Kensington and Chelsea
Council Tax Band: F
EPC Rating: E
Furnished

Chestertons South Kensington Lettings

44-48 Old Brompton Road
 South Kensington
 London
 SW7 3DY

southkensingtonlettingsusers@chestertons.co.uk
 02075891244



Chesterton UK Services Limited trading as Chestertons for themselves and for the vendor of this property whose agents they are, give notice that (i) these particulars do not constitute any part of an offer or contract, (ii) all statements contained within these particulars are made without responsibility on the part of Chestertons or the vendor, (iii) whilst made in good faith, none of the statements contained within these particulars are to be relied upon as a statement or representation of fact, (iv) any intending purchasers must satisfy themselves by inspection or otherwise as to the correctness of each of the statements contained within these particulars, (v) the vendor does not make or give either Chestertons or any person in their employment any authority to make or give representation or warranty whatsoever in relation to this property. Wide angle lenses may be used. ©Copyright Chestertons | Chesterton Global Ltd | Registered Office 40 Connaught Street, Hyde Park, London W2 2AB Registered Company Number 05334580.

