



Prince Of Wales Drive, SW11
£695,000

Dexters



Prince Of Wales Drive, SW11

A beautiful two double bedroom apartment in a prestigious mansion block on the sought after Prince Of Wales Drive, located opposite Battersea Park & moments from the iconic Battersea Power Station. The property comprises a large open plan reception room/kitchen & two bathrooms.

As you head into the property you have a wide and welcoming hallway. To the left hand side you have a modern family bathroom finished to an immaculate standard. Through the hallway you have an exceptionally large open plan reception/kitchen/dining area, the perfect space for entertaining and relaxing alike. To the rear of the property you have two double bedrooms with high ceilings and the second bathroom completes the accommodation.

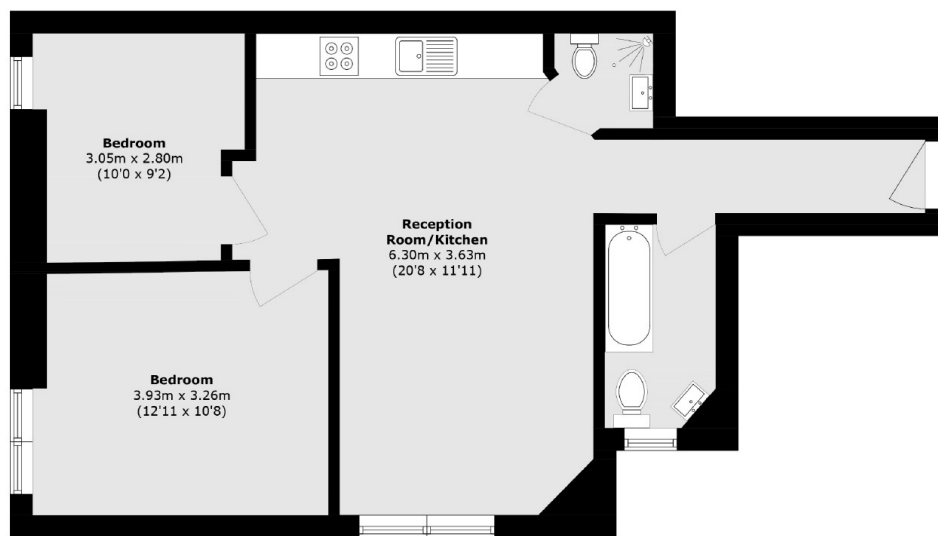
Prince Of Wales Drive offers excellent transport links to the rest of London. The nearby overground provides access into Waterloo & Victoria with the nearby tube (Northern Line) getting you into the City & Central London. Kings Road and Battersea Power Station development are a short stroll across the park.

Features

- Prince Of Wales Mansions
- Two Double Bedrooms
- Open Plan Reception/Kitchen
- Two Bathrooms
- Opposite Battersea Park
- Refurbished



Prince Of Wales Drive,
London, SW11



Total area (approx.): 59.9 sq. m (645.0 sq. ft)

Dexters

Northcote Road
93 St. John's Road
London
SW11 1QY
Sales
020 7483 6333

Energy Rating: . We aim to make our particulars both accurate and reliable. However they are not guaranteed; nor do they form part of an offer or contract. If you require clarification on any points then please contact us, especially if you're traveling some distance to view. Please note that appliances and heating systems have not been tested and therefore no warranties can be given as to their good working order.

 **RICS** | Regulated
Estate Agent
and Letting Agent

dexters.co.uk