



**Walnut Grove, Fakenham NR21 8AB**

**welcome to**

**Walnut Grove, Fakenham**

Spacious 4-bed detached chalet bungalow in Fakenham on a 1/3 acre plot, with versatile living space, wooden carport, garage and dual access, blending rural feel with town convenience.



## **Accommodation**

### **Entrance Hall**

Ceramic tiled flooring. Double-glazed door at the entrance. Spotlights. Radiator.

### **Lounge**

Carpeted flooring. Brick fireplace with wood burner. Sliding doors to conservatory. Triple-glazed windows to the front and side. Two radiators.

### **Dining Room**

Tiled flooring. Spotlights. Double doors from hallway into dining room. Double-glazed window to the rear. Radiator.

### **Kitchen**

Tiled flooring. Wall and base units. Stainless steel sink and drainer. Tiled splashback. Spotlights. Rangemaster and extractor fan. Space for dishwasher. Space for fridge/freezer. Breakfast bar. Double-glazed windows to the side and rear.

### **Utility Room**

Tiled flooring. Double-glazed windows to the front, side and rear. Door to the rear garden. Stainless steel sink and drainer. Space for washing machine and tumble dryer. wall and base cupboards. Cupboard with water tank.

### **Bedroom One**

Carpeted flooring. Double-glazed window to the side. Radiator.

### **En Suite**

Tiled flooring. Fitted with WC, shower and wash hand basin. Double-glazed window to the side.

### **Bedroom Two**

Carpeted flooring. Double-glazed window to the rear. Radiator.

### **Adjacent Shower Room**

Adjacent to bedroom two. Fitted with WC, shower and wash hand basin. Double-glazed window to the side. Radiator.

### **Bedroom Three**

Carpeted flooring. Double-glazed window to the side. Radiator.

### **Bathroom**

Fully tiled with tiled flooring. Fitted with WC, bath and wash hand basin. Double-glazed window to the side. Spotlights.

### **First Floor Landing**

Carpeted flooring. Spotlights. Eaves storage. Loft access with spacious good storage.

### **Bedroom Four**

Carpeted flooring. Velux windows to the side. Double-glazed window to the rear. Sink and base unit.

### **Conservatory**

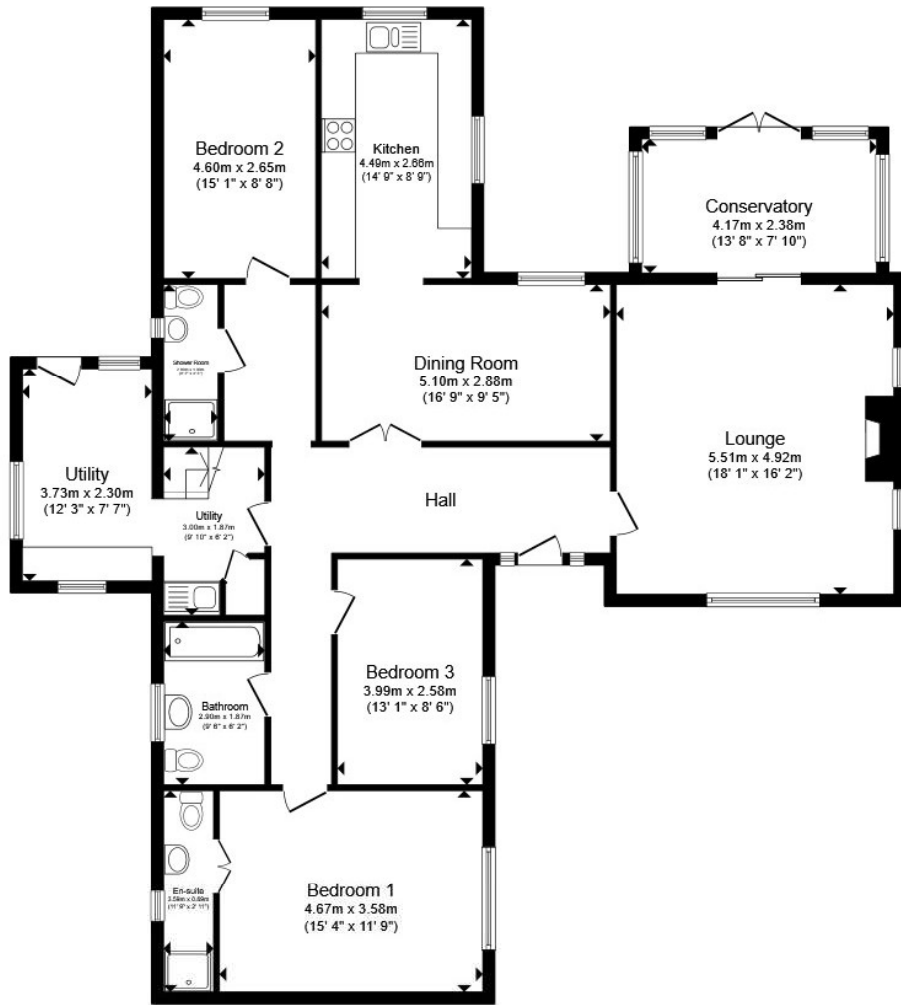
Tiled flooring. Double-glazed windows all round. Patio doors to rear garden.

### **Front Garden**

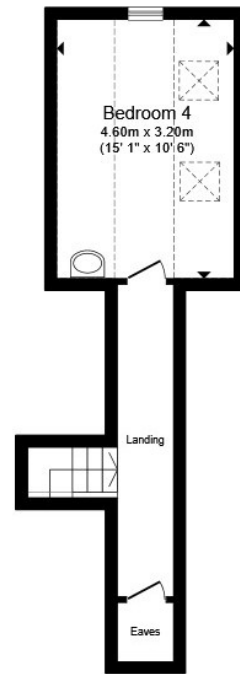
Gravelled driveway with shrubs. Garage. Gate leading to rear of the property with patio.

### **Rear Garden**

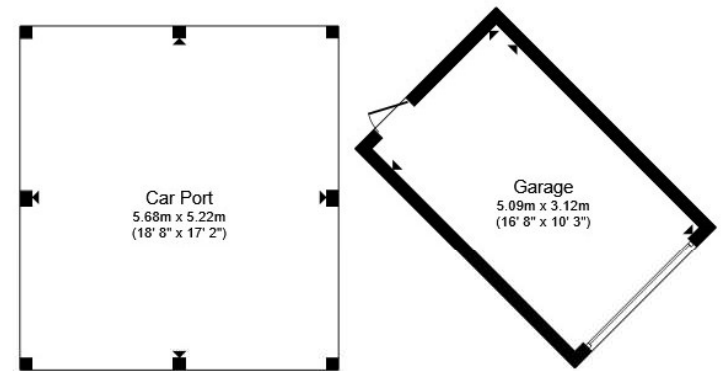
Gravelled rear driveway. Carport with patio flooring, power and electric.



**Ground Floor**



**First Floor**



**Outbuilding**

Total floor area 192.8 m<sup>2</sup> (2,076 sq.ft.) approx

This floor plan is for illustrative purposes only. It is not drawn to scale. Any measurements, floor areas (including any total floor area), openings and orientation are approximate. No details are guaranteed, they cannot be relied upon for any purpose and they do not form part of any agreement. No liability is taken for any error, omission or misstatement. A party must rely upon its own inspection(s). Powered by [www.propertybox.io](http://www.propertybox.io)

welcome to

## Walnut Grove, Fakenham

- 4 Bedroom Detached Chalet Bungalow
- Dual access from front and rear
- Kitchen with rangemaster and breakfast bar
- Ground floor principal bedroom with en suite
- Two additional ground floor bathrooms

Tenure: Freehold EPC Rating: Awaiting

Council Tax Band: D

# £450,000



Please note the marker reflects the postcode not the actual property

check out more properties at [williamhbrown.co.uk](http://williamhbrown.co.uk)



Property Ref:  
FKM108793 - 0002

1. MONEY LAUNDERING REGULATIONS Intending purchasers will be asked to produce identification documentation at a later stage and we would ask for your co-operation in order that there is no delay in agreeing the sale. 2. These particulars do not constitute part or all of an offer or contract. 3. The measurements indicated are supplied for guidance only and as such must be considered incorrect. Potential buyers are advised to recheck measurements before committing to any expense. 4. We have not tested any apparatus, equipment, fixtures or services and it is in the buyers interest to check the working condition of any appliances. 5. Where an EPC, or a Home Report (Scotland only) is held for this property, it is available for inspection at the branch by appointment. If you require a printed version of a Home Report, you will need to pay a reasonable production charge reflecting printing and other costs. 6. We are not able to offer an opinion either written or verbal on the content of these reports and this must be obtained from your legal representative. 7. Whilst we take care in preparing these reports, a buyer should ensure that his/her legal representative confirms as soon as possible all matters relating to title including the extent and boundaries of the property and other important matters before exchange of contracts.

William H Brown is a trading name of Sequence (UK) Limited which is registered in England and Wales under company number 4268443. Registered Office is Cumbria House, 16-20 Hockliffe Street, Leighton Buzzard, Bedfordshire, LU7 1GN. VAT Registration Number is 500 2481 05.



**01328 864922**



[Fakenham@williamhbrown.co.uk](mailto:Fakenham@williamhbrown.co.uk)



Royal Oak House 18 Oak Street, FAKENHAM,  
Norfolk, NR21 9DY



[williamhbrown.co.uk](http://williamhbrown.co.uk)