



# Juniper Court

Kensington Green, W8

£3,358.33 per month  
(£775.00 per week)

A modern first floor apartment situated in this highly desirable portered and gated development. Double bedroom, modern bathroom, semi open plan kitchen and reception. Residents have access to the gym facilities within the complex.



# Juniper Court

## Kensington Green, W8

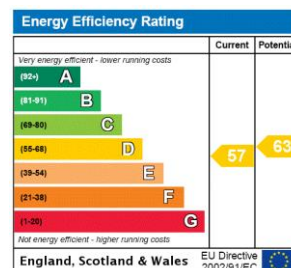
- Kensington Green Development
- Modern Bathroom
- Access to Onsite Gym Facilities
- 24 hour Concierge
- A short walk to Kensington High street
- Communal Gardens



An immaculate first floor one bedroom apartment that is situated in this highly desirable gated and portered development with lift, parking and gym facilities for residents. The property has been finished to a high standard and comprises a bright reception with two sets of French doors with Juliette balcony, stylish shower room, open plan kitchen and double bedroom with fitted wardrobes.

Ideally located a short distance to Kensington High street and open green spaces of Hyde Park.

**Minimum Term:** 6 months  
**Deposit Required:** £3,875.00  
**Local Authority:** Royal Borough of Kensington & Chelsea  
**Council Tax Band:** G  
**EPC Rating:** C  
**Furnished**

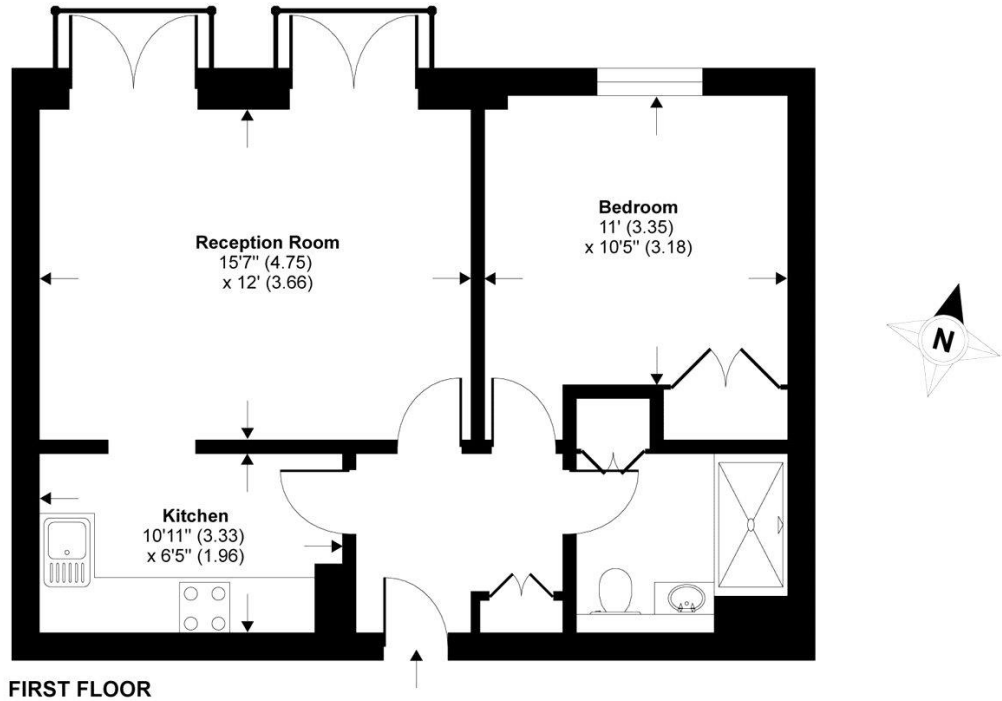


### Chestertons Kensington Lettings

116 Kensington High Street  
 Kensington  
 London  
 W8 7RW  
 lettings.kensington@chestertons.co.uk  
 02079377260  
 chestertons.co.uk

Additional tenant charges apply (fees apply to non-AST tenancies only)  
 Tenancy Agreement Fee: £300  
 References per Tenant/Guarantor: £60  
 Inventory check (approx. £100 – £250 inc. VAT)  
[chestertons.co.uk/property-to-rent/applicable-fees](http://chestertons.co.uk/property-to-rent/applicable-fees)

# St. Marys Place, London, W8



**TOTAL GROSS INTERNAL FLOOR AREA 521 SQ FT 48.4 SQ METRES**

Whilst every attempt has been made to ensure the accuracy of the floor plan contained here, measurements of doors, windows and rooms are approximate and no responsibility is taken for any error, omission or misstatement. These plans are for representation purposes only as defined by RICS Code of Measuring Practice and should be used as such by any prospective purchaser. Specifically no guarantee is given on the total square footage of the property if quoted on this plan. Any figure given is for initial guidance only and should not be relied on as a basis of valuation.

Copyright nichecom.co.uk 2015 Produced for Chesterton Humberts REF : 42176

