



Plot 6, The Compton Frenches Green, Upton, Poole, Dorset, BH16

£450,000

- The Compton
- A Collection of 2,3 & 4 Bedroom Homes
- Open Plan Kitchen/Diner With French Doors
- Anticipated Completion - August 2026
- Detached Family Home
- Garage and Drive for Two Cars
- Reserve Off Plan
- Three Bedrooms
- En-Suite To Main Bedroom
- Close To Upton Country Park

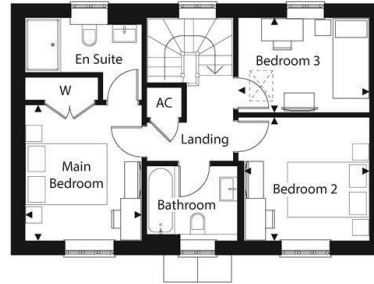
The Compton



Ground Floor

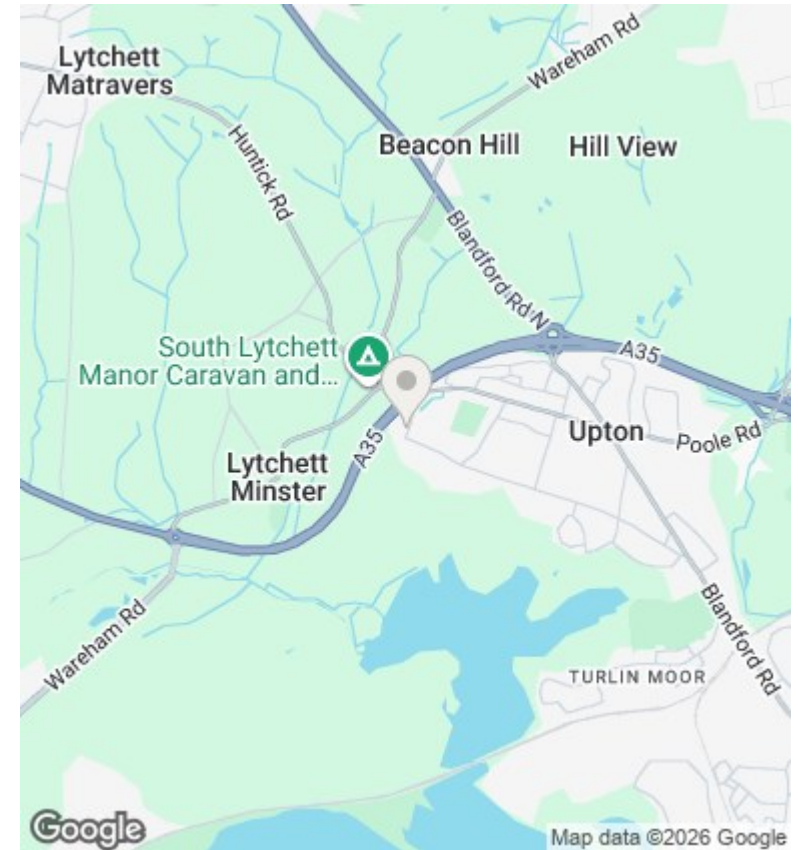
Kitchen / Dining	2.90m x 5.58m	9' 6" x 18' 4"
Living Room	3.28m x 5.58m	10' 9" x 18' 4"

TOTAL FLOOR AREA 96m² 1036ft²



First Floor

Main Bedroom	2.92m x 3.37m	9' 7" x 11' 1"
Bedroom 2	3.14m x 3.10m	10' 4" x 10' 4"
Bedroom 3	3.29m x 2.36m	10' 10" x 7' 9"



Directions

Viewings

Viewings by arrangement only. Call 01202 622101 to make an appointment.

Council Tax Band

EPC Rating:

Energy Efficiency Rating		
	Current	Potential
<i>Very energy efficient - lower running costs</i>		
(92 plus) A		
(81-91) B		
(69-80) C		
(55-68) D		
(39-54) E		
(21-38) F		
(1-20) G		
<i>Not energy efficient - higher running costs</i>		
England & Wales	EU Directive 2002/91/EC	